

## Product Features

- Sony STARVIS 2™ IMX678
- ONVIF Profile S compliant for standardized IP integration
- NDAA Compliant (Section 889)
- GPIO connector



## Description

The 801-IP-678 is a 38 × 38 mm board level 8 MP (4K) IP camera with API support for application development.

The camera supports digital pan tilt zoom, DHCP or static IP configuration, and integrates Ethernet magnetics, microSD card support, and GPIO for compact embedded system integration.

## Technical Specifications

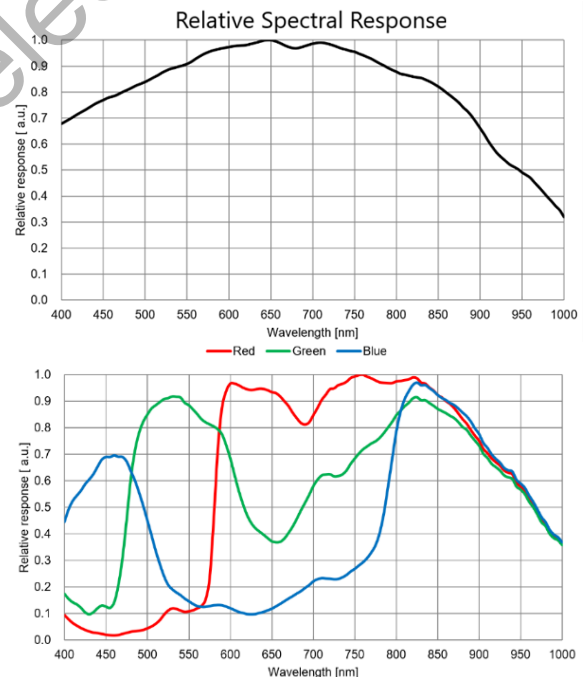
### Sensor Data

Image Sensor	Sony IMX678, Starvis 2™
Sensor Size	1/1.8"
Resolution	3840 x 2160
Optical Size	1/1.8"
Pixel Size	2.0 μm x 2.0 μm
Shutter	Progressive
Sensitivity	0.05 lux (0.04 lx ~ 0.07 lx)

### Certifications

REACH	Compliant
RoHS	Compliant
NDAA	Section 889 Compliant
ONVIF	Profile S

### Spectral Response



## Technical Specifications (cont'd)

### Camera Data & Functionality

Video Resolution(s)	3840 x 2160, 1920 x 1080, 1280 x 720, 640 x 480
Frame Rate(s)	5, 10, 15, 20, 25, & 30 fps
Video CODEC	H.265/H.264/MJPEG
Streaming	Up to 3 streams
Processor	Quad-core CPU 64-bit RISC-V
Latency	Typ. < 300 ms
Shutter	Auto/Manual
Virtual Pan/Tilt/Zoom	Yes
Real Time Clock (RTC)	Yes
RTC Battery Backup	Yes
Micro SD-Card Compatibility	Hardware optional, see Related Parts
GPIO	Yes

### Electrical

Input Voltage	5-15 VDC
Power @ 12 VDC	2.7 W (typ) 4.2 W (max)

### Environmental

Operating Temp.	-30 °C ~ 80 °C (-22 °F ~ 176 °F)
Storage Temp.	-40 °C ~ 85 °C (-40 °F ~ 185 °F)
Operating Humidity	25 ~ 90 % RH (non-condensing)
Storage Humidity	< 75 % RH

### Mechanical (Camera Board Only)

Dimensions WxHxD	38 mm x 38 mm x 10 mm
Weight	9.5 g

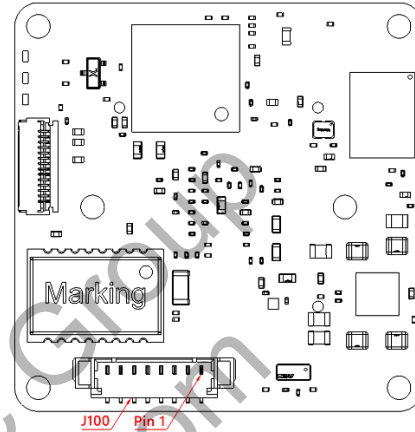
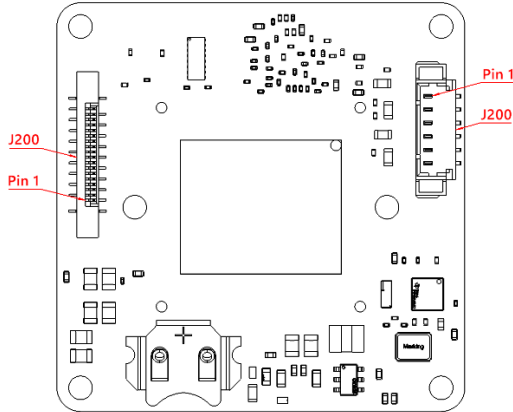
### Related Parts

Part Number	Description
60C5030	Ethernet & Power Cable
72V5145	SD-Card Interface Board
72V5153	SD-Card Interface Board Cable

Aegis Electronic Group  
www.aegiselect.com



## Connector(s)



Function	SD-Card Header
Label	J201
Type/Mfg.	Würth WR-FPC
P/N	687318124422
Mate P/N	0.5 mm Pitch 18 Way FPC
Pin 1	Closest to board center

Function	GPIO Connector, Future Use
Label	J200
Type/Mfg.	Molex PicoBlade
P/N	533980671
Mate P/N	510210600
Pin 1	Marked with dot on PCB

Function	Ethernet + Power
Label	J100
Type/Mfg.	Molex PicoBlade
P/N	533980871
Mate P/N	510210800
Pin 1	Marked with dot on PCB

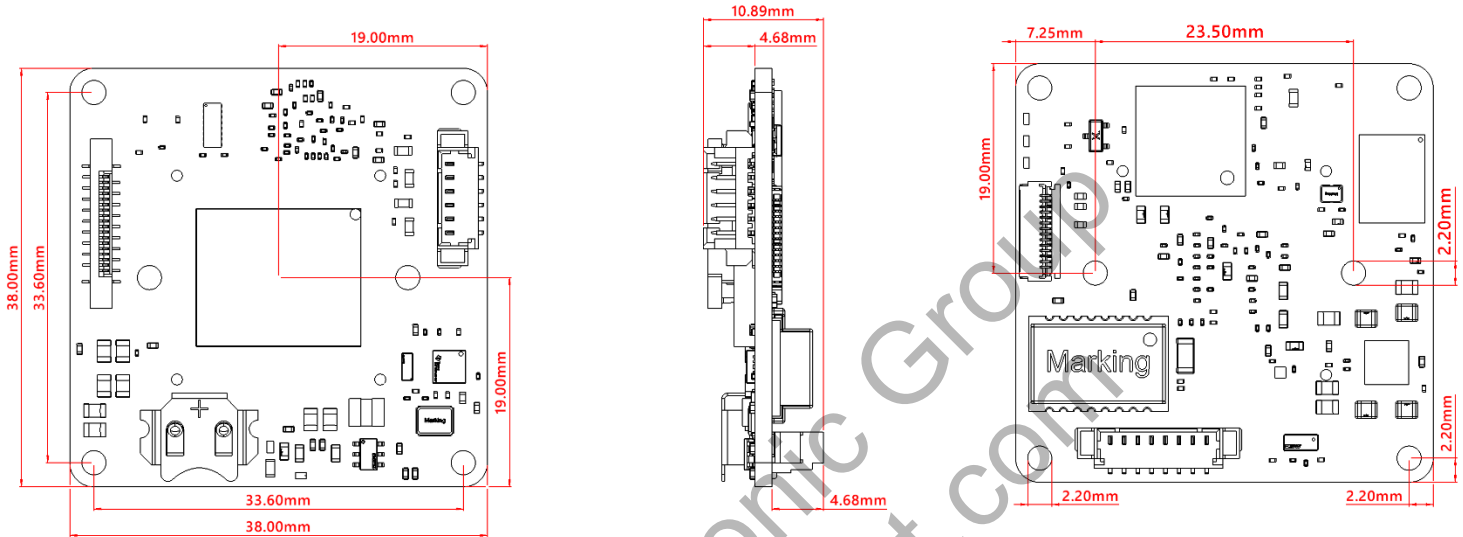
Pin	Function
01	GND
02	3V3
03	3V3
04	GND
05	SDCARD-DATA2
06	GND
07	SDCARD-DATA3
08	GND
09	SDCARD-CMD
10	GND
11	SDCARD-CLOCK
12	GND
13	SDCARD-DATA0
14	GND
15	SDCARD-DATA1
16	GND
17	SDCARD-DETECT
18	GND

Pin	Function
01	GPIO 0
02	GPIO 1
03	GND
04	GPIO 3
05	GPIO 4
06	GND

Pin	Function
01	GND
02	VIN 12V
03	SHIELD
04	TX+
05	TX-
06	RX+
07	RX-
08	SHIELD



## Dimensions



## Part Numbering

Base Part Number	801-IP-678-xyzp	
x (Lens Mount)	0	No lens Mount
	1	10 mm M12 Lens Mount
	1H	10 mm M12 Lens Mount with Heatsink
	2	16 mm M12 Lens Mount
	2H	16 mm M12 Lens Mount with Heatsink
y (Spectrum)	C	Color
	M	Mono
z (Filter)	0	No IR Filter
p (Power)	DC	Direct Current

### Example:

801-IP-678-2HC0DC – 8 MP Camera, IP, Sony Starvis 2™ IMX678, 16 mm M12 Lens Mount with Heatsink, Color, No IR Filter, Direct Current

### Note:

Heat sink recommended

