

Encoder

ME-330

Ver.1.0

Triple Streaming + SVC Stream

1920×1080

1920 × 1080 30fps

Main Stream : 512 ~ 10000 kbps

ONVIF(Profile S), CGI

input : LVDS 4/8 lanes(Sony LVDS) via 30 pin micro coaxial cable

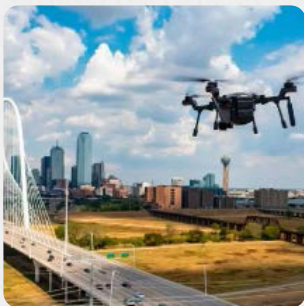


Business Area

Network Performance

Network zoom camera module is a fully integrated network block camera including Image sensor, long range zoom lens, video encoding, video analysis and network transmission functions. It is designed to be flexible embedded into PTZ cameras, Machine Vision cameras, Robot systems, Intelligent Surveillance equipment, UAV drones. MLVision network zoom modules provide standard RJ45 cable and complete SDK/ISAPI protocols. It comes with intuitive WEB GUI and configuration tool.

MLVision, employing the industry-leading imaging technologies accredited in the ITS, Defense/Law Enforcement, Inspection, Machine Vision, Surveillance market and in-house manufacturing technologies for IP-based fast performance, now announces the release of a Compact Zoom Module with imaging enhancement features which assures high-quality image transmission when networked environment is crucial. The realized physical size and weight of the compact module are optimum for an extensive range of customization, including applications as ariel/ground/maritime drones, inspection, ITS, machine vision and security and surveillance applications



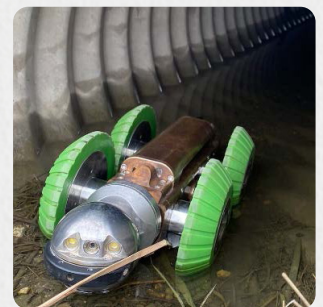
Unmanned Aerial, Ground & Maritime Vehicles

From peace time to war time or simple border surveillance applications, detailed, high-resolution imagery provides critical data for immediate decision support and post-processing

The integration of autonomous drones and robotic technology marks a turning point, heralding a transformative era in daily life

Inspection Applications

Carry out your inspections and observations independently of the client's requirements in detailed IP HD images. Inspect more coverage per deployment with HD image. Low cost of ownership can be achieved.



Military & Law Enforcement

Ensure dominance by delivering the most advanced ground sensors in the world.

Intended for integrators for land, Air and maritime applications. High performance integrated optronic solution, designed for vision from armoured vehicles and site surveillance

InterTraffic Management

Enables possibilities for seamless traffic control with Intelligent Traffic Management Solutions. Advanced traffic cameras empower incident response, streamline roadwork planning, and optimize traffic flow.

Proactively monitor road hazards such as weather, potholes, wildlife, and flooding with our high-quality network solutions. Empower immediate action with clear visualizations day or night.

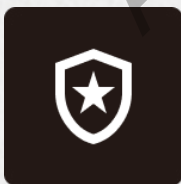


Machine Visions and Robotics

Give industrial equipment the ability to "see" what it is doing and make rapid decisions based on what it sees. From visual inspection and defect detection, positioning and measuring parts, and identifying, sorting to tracking products.

Industrial machine vision is the backbone of smart manufacturing, logistics, and operations. Machine vision cameras, embedded IoT sensors, and industrial PCs can bring intelligence, analysis, and efficiency to every step of the manufacturing process.

Industries We Specialize In



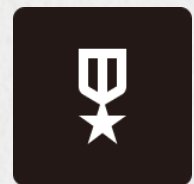
Public Safety



Oil & Gas



Federal
Government



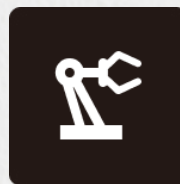
Military &
Law Enforcement



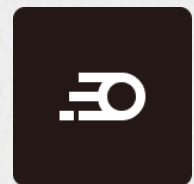
Agriculture



Construction &
Engineering



Inspection &
Manufacturing



Roads &
Railways

Video

Video Compression	H.265 / H.264 / MJPEG
Streaming capacity	Triple Streaming (3 x H.264/H.265 + 1 x JPEG)
Stream	Main Stream: 1920x1080, 1280x1024, 1024x768, 1280x720, 704x576, 704x480, 640x480, 640x360, 352x288,352x240 Second/Third Stream : 640x480, 640x360,352x288,352x240
Max Video Frame rate	1920x1080 30fps
Video Bit rate	Main Stream : 512 ~ 15000 kbps Second Stream : 512 ~ 8000 kbps Third Stream : 512 ~ 3000 kbps
Video Bit rate control	CBR/VBR
Motion detection	-
Region of Interest	-
Flip Horizontal / Flip Vertical	-
Privacy masking	-

Audio

Audio compression	G.711 ulaw
--------------------------	------------

Network

Network	10/100Mbps
Protocol	IPv4, IPv6, IGMP, ICMP, ARP, TCP, UDP, DHCP, RTP, RTSP, RTCP, DNS, NTP, UPnP, HTTP, HTTPS, SSL/TLS
Stream method	Unicast/ Multicast
Compatibility	RESTful API, Onvif Profile S
Web viewer	Internet Explorer, Chrome, Firefox, Safari

Interface

LVDS interface	30pin kel connector(HD Sony LVDS Camera Mico Coexcial Cable)
Alarm In/Out	1/1 CMOS 3.3V input / output
Audio In/Out	1/1
Uart	support UART signal for RS485 support PELCO "D" protocol
Storage	Micro SD(up to 2TB)(option)

Power

Power supply	12V
Power consumption	Max 3W

General

Demension	42 x 42
Operating Temperature/Huminty	0°C ~ 50°C/10%~90%