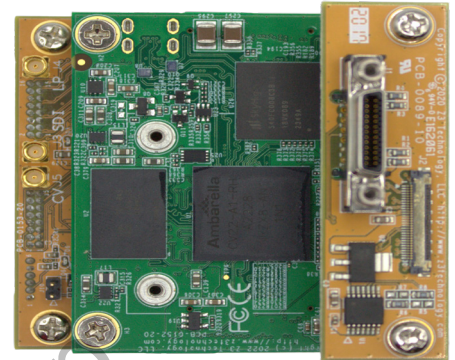


- H.265/H.264 Dual Camera Video Streaming
- Interfaces with Cameralink and SDI Cameras
- High Quality, Low Latency Encoding Streaming and Recording
- Send Power, Controls and Video from the Encoder to your Cameralink or LVDS Camera

## CamL-15



### Technical

Camera1 Interfaces	Cameralink via SDR Connector
•Cameralink Formats	Cameralink Base Support <ul style="list-style-type: none"> <li>• Pixel Clock Frequency up to 85 MHz</li> <li>• Monochrome, RGB, and YUV Pixel Formats 8-16 Bits</li> </ul>
Camera2 Interfaces	SDI
•Additional Interfaces	100 Megabit Ethernet, RS-232, UART and Serial
Video Codecs	H.265, H.264 and MJPEG
Recording	Networks File System or Micro-SD
Encoding Resolutions	1080p (up to 60fps), 720p (up to 60fps), NTSC/PAL, VGA, CIF and QVGA
Output Formats	RTP, RTSP, MPEG-2 TS, RTMP, RTMPS, TSRTMP and SRT <ul style="list-style-type: none"> <li>• Low Latency, Low Power</li> <li>• Cyber Secure Features Available, SNMPv2, SNMPv3 and the ability to turn off unneeded services</li> <li>• User Level Authentication Settings Available</li> <li>• Simultaneous encode of H.265/HEVC and H.264</li> <li>• Record to Micro-SD or Network File System</li> <li>• Control via HTTP/HTTPS web GUI, API, ONVIF or SSH/Serial</li> <li>• SRT Modes Supported: Caller, Listener, Rendezvous, SRT Encryption, AES-128, 192, 256</li> <li>• Live Video Preview in the Web GUI</li> <li>• Multicast and Unicast Support</li> <li>• Text Overlay via Web GUI or custom placement of Text or PNG via HTTP/S API</li> <li>• RS-485 Pelco D Support, 3 configurable serial ports</li> <li>• Dual output displays or PIP Mode Support</li> <li>• STANAG 4609 Compliant</li> <li>• Embedded KLV Metadata Support via SDI or Serial, MISB 0601 Compliant</li> <li>• High Precision Timestamps Across Multiple Streams, MISB 0604 Compliant</li> <li>• AI Ready for on the edge analytics</li> </ul>
Features	



### ORDERING OPTIONS

#### CamL-15

##### OEM Production Set

- CamL-15 Encoder Boards

Note: Camera and cables sold separately

#### CamL-15-RPS

##### OEM Starter Kit

- CamL-15 Encoder Boards
- Power Supply
- Software SDK
- Documentation
- Serial Cable
- KEL Cable

Note: Camera sold separately

### APPLICATIONS

- Inspection
- Security and Surveillance
- Industrial
- Unmanned Military
- Customized Applications\*

### Specifications

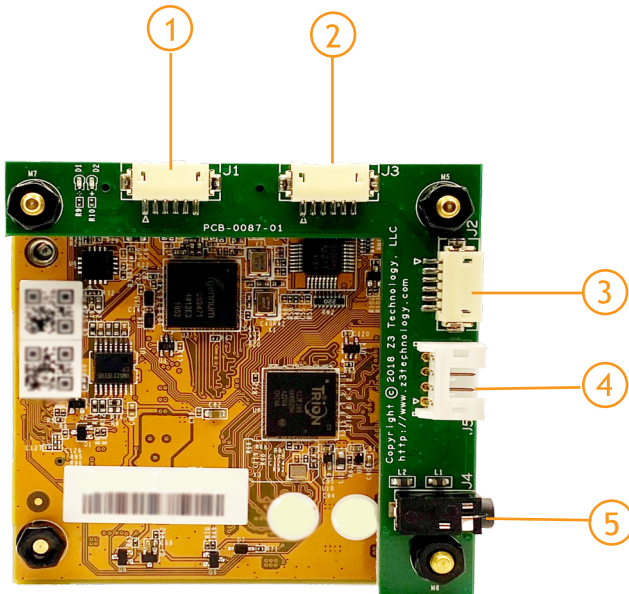
Encoder Board Size	58 x 58 mm (2.28 x 2.28 in)
Encoder Board Weight	65g
Power Consumption	4.5W typical while encoding 2 cameras in H.265
Power Supply	12V DC or PoE 802.3af/at class 0



Made in the USA

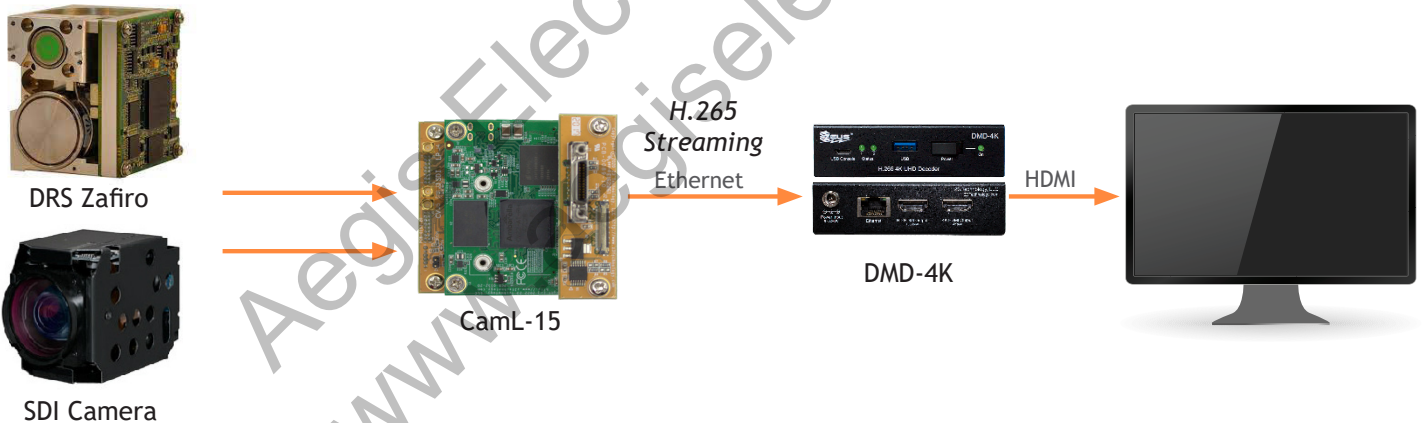


# Operating Contols



- ① Ethernet (100Mb)
- ② Serial + GPIO
- ③ UART
- ④ 12V Power
- ⑤ RS-232 Serial

## USE CASE



Z<sup>3</sup> Technology is an industry-leading, USA-based manufacturer of production-ready embedded multimedia solutions and IP camera systems. From our founders to our world-class engineers to our sales and customer service team, we understand your requirements and speak your language. Our experience allows us to provide cost-effective solutions to meet your multimedia product requirements. With the assistance of our robust worldwide distribution and sales networks, we can provide a simple solution for your multimedia needs.

