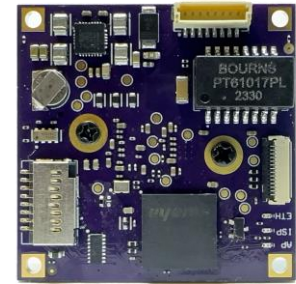


2MP Color IP camera 38x38mm
single board



Product Features

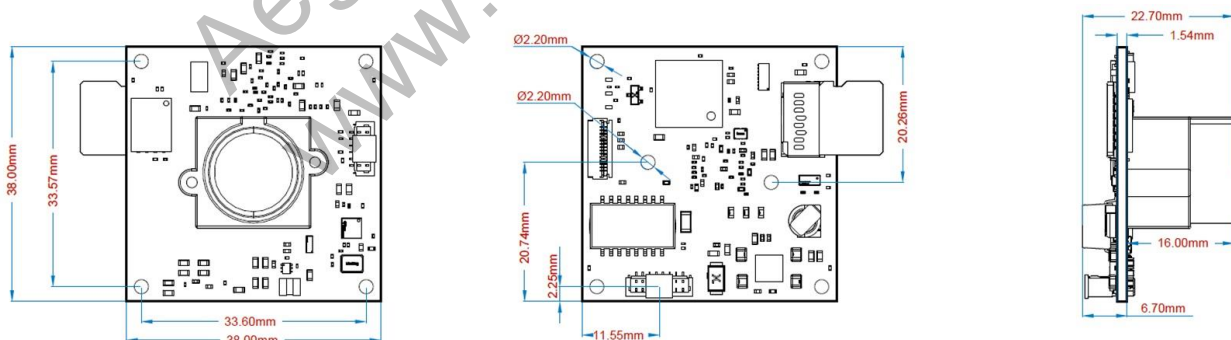
- Sony IMX462 STARVIS 2MP
- RISC-V 64-bit processor
- Embedded Linux
- Micro SD card
- Vin +12V
- 10/100 Mbps Ethernet w/ magnetics on board
- 4 GPIO pins
- RTSP video streaming
- H.265/H.264/MJPEG compression
- NDAA Compliant

Board level 2Mpixel IP Color camera with magnetics, microSD card and GPIO

The 201-IP462-xC is a 2 Megapixel Color IP camera based on an Embedded RISC-V processor with dedicated video pipeline. The camera supports various video processing algorithms and settings such as, AWB, AEX, Brightness, Hue, video streaming and more. Programming/configuration is supported via HTTP API.

The camera is based on an Embedded RISC-V processor with Embedded Linux for user application development. The camera can be directly connected to any DHCP enabled network or static IP.

Dimensions



2MP Color IP camera 38x38mm single board

Technical specifications

Opto-Electrical

Image sensor	1/2.8" IMX462LQR-C CMOS
Recording Active Pixels	1920x1080
Pixel size	2.9µm x 2.9µm
Effective image size	Diagonal 6.46 mm
Sensitivity	Up to ~0.001 Lux
Scanning system	Progressive
Shutter type	Rolling, Auto, Manual
Sensor resolutions	FHD 1920x1080, HD 1280x720
Framerate	Up to 60 fps
Aspect ratio	16:9, 4:3

Electrical

Supply Voltage	+12 V +/- 10%
Typical Current	0.2A (single stream)
Power	Typ. 2.4W

Software features

Video codec	H.265/H.264/MJPEG
Streaming	5 streams
Latency	Typ. <150ms
Processor	Quad-core CPU 64-bit RISC-V
ISP	AE, AWB, WDR, DNR, Motion Detection, Blending, Scaling, ...**
ISP special functionality	Virtual Pan/Tilt/Zoom
Operating System	Embedded Linux
Protocols	HTTP API, RTSP, DHCP, STATIC IP

Connector P1 Ethernet 10/100Mbps

01	RJ_TX+
02	RJ_TX-
03	RJ_RX+
04	VIN 12V
05	VIN 12V
06	RJ_RX-
07	GND
08	GND

Environmental

Operating Temp.	-10°C to 50°C
Operating Humidity	30% ~ 90% RH
Storage Humidity	<85% RH

Hardware features

Real Time Clock (RTC)	Battery backup
Micro SD card	Supported
General Purpose In/Out**	4 GPIO's on connector P2

Ethernet connector

Connector P1	TX pair, RX pair 10/100 Mbps
Ethernet + Power cable assembly	Included

Mechanical

Dimensions WxHxD	38x38x6.7 mm (w/o lens mount)
Connectors	P1: WR-WTB SMT 1mm 8p P2: WR-WTB SMT 1mm 6p

Part numbering

Base part number: 201-IP-462-xC	Color
Option x:	
201-IP-462-xC	7/x: no lens mount
201-IP-462-2C	2: pin hole mount
201-IP-462-5C	5: M12 lens mount
201-IP-462-8C	8: CS lens mount

Connector P2 GPIO**

01	GPIO 0
02	GPIO 1
03	GND
04	GPIO 3
05	GPIO 4
06	GND

**: future release or to be confirmed

