

MC-S308B

2MP High Sensitivity 30x Zoom Module

HD-SDI EX-SDI HD-TVI CVBS

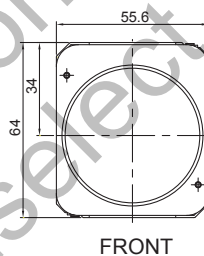


Features

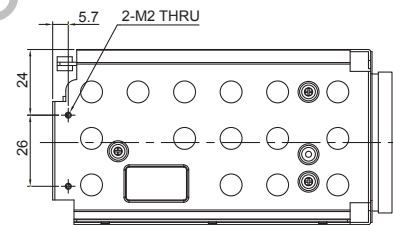
- 1/2" 2MP Sony CMOS Sensor
- 1080p 60fps/30fps, 720p 60fps/30fps
- 30x Optical Zoom(6mm~180mm) & 32x Digital Zoom
- F1.5(wide) ~ F4.3(tele)
- Day & Night(ICR)
- Wide Dynamic Range
- Digital Noise Reduction(2D+3D)
- Digital Image Stabilization
- Privacy Mask Function
- High Light Compensation
- Intelligent Motion Detection
- Defog Function
- Supports VISCA, Pelco-D/P Protocol
- Video Out : HD-SDI, EX-SDI, HD-TVI, CVBS

Dimensions

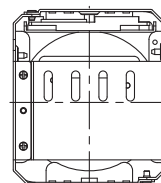
Unit : mm



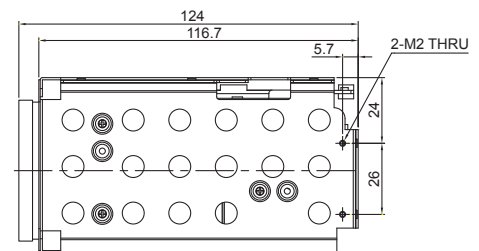
FRONT



LEFT SIDE

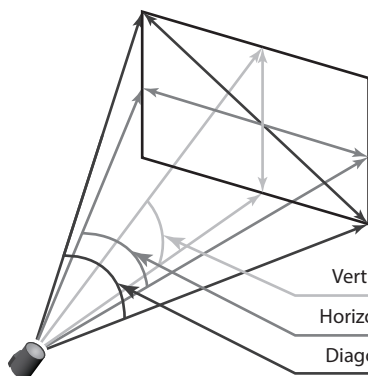


BACK

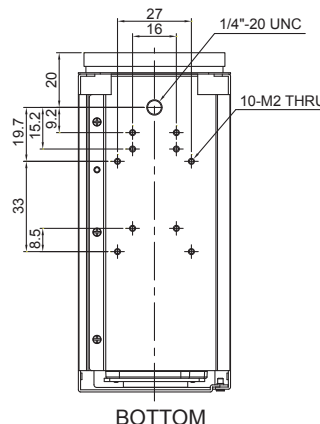


RIGHT SIDE

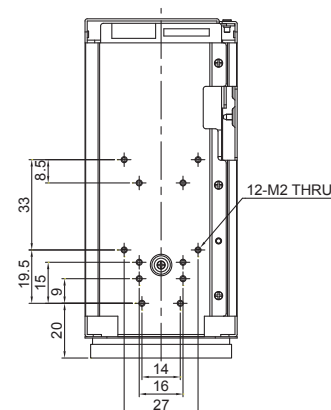
Field of View



Vertical W: 34.11° / T: 1.39°
 Horizontal W: 58.44° / T: 2.45°
 Diagonal W: 65.56° / T: 2.81°



BOTTOM



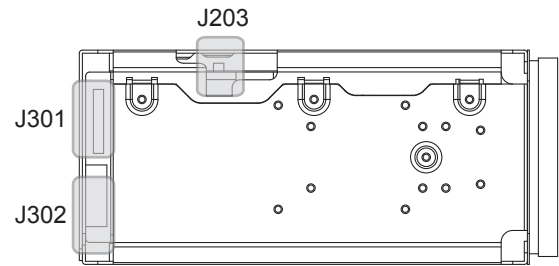
TOP

Specifications

| MC-S308B | | | | |
|---------------------------|---|--------|--------|--------|
| Image Sensor | 1/2" Sony CMOS Sensor | | | |
| Total Pixels | 1,952 (H) x 1,113 (V) = 2.17M Pixels | | | |
| Active Pixels | 1,937,(H) x 1,097 (V) = 2.12M Pixels | | | |
| Scanning System | Progressive Scan | | | |
| Sync. System | Internal | | | |
| Resolution | Digital ; 1080p/60(50)fps, 1080p/30(25)fps, 720p/60(50)fps, 720p/30(25)fps Analog : 700TVL | | | |
| Min. Illumination | Color(1/30s) : 0.15 lux , BW(1/30s) : 0.01lux Color DSS(1/7.5s) : 0.0375 lux , BW DSS(1/7.5s) : 0.002 lux | | | |
| Video Output | HD : HD-SDI, EX-SDI Analog : VBS(without WDR), HD-TVI | | | |
| S/N Ratio | more than 50dB(AGC off) | | | |
| Lens Type | 30x Day & Night Zoom Lens | | | |
| Zoom Ratio | Optical 30x, Digital 32x Zoom | | | |
| Focal Length | f = 6.0 mm ~ 180.0 mm | | | |
| Aperture Ratio | F1.5 (wide) ~ F4.3 (tele) | | | |
| Angle Of View(D, H, V) | Wide | 65.56° | 58.44° | 34.11° |
| | Tele | 2.81° | 2.45° | 1.39° |
| AF Mode | Auto / One Push / Manual | | | |
| Min. Distance | 0.1 / 1.5 / 3.0 / 5.0 / 10.0 m | | | |
| Lens Refresh | One Push / 1 ~ 10Day | | | |
| Digital Zoom | Off / MAX 2x ~ 32x | | | |
| Exposure | Auto / Iris.P / Shut.P / Manual | | | |
| Gain Control(AGC) | Off / On | | | |
| Shutter Speed | 1/30(25) ~ 1/30,000 sec | | | |
| Iris | 0 ~ 20 steps | | | |
| Digital Slow Shutter(DSS) | Off / 2x / 4x / (8x : 60 or 50 fps mode only) | | | |
| Brightness | 0 ~ 20 steps | | | |
| WDR/BLC | Off / WDR / BLC | | | |
| Day&Night | Auto / Day / Night / Ext-in | | | |
| White Balance | Auto / One Push / Manual / Indoor / Outdoor | | | |
| HLC | Off / On / Night Only | | | |
| DNR | Auto / Off / Low / Middle / High | | | |
| Mirror | Off / H / V / H&V | | | |
| Sharpness | 0 ~ 10 steps | | | |
| ACE | Off / Low / Middle / High | | | |
| Defog | Off / On(Auto / Manual) | | | |
| Privacy Mask | Max. 24 Areas | | | |
| Motion Detection | Max. 3 Areas | | | |
| Defect Detection | Off / On | | | |
| System | NTSC / PAL | | | |
| Communication | Baud Rate : 2400 / 4800 / 9600 / 19200 / 38400 / 57600 / 115200 Protocol : VISCA / Pelco-D / Pelco- P / Update | | | |
| Language | English / Simplified Chinese / Traditional Chinese / Japanese | | | |
| Power Source | 9V to 15V DC | | | |
| Power Consumption | 500mA | | | |
| Power Input | Connector | | | |
| Video Output | Connector | | | |
| Storage Temperature | -20℃ ~ +60℃ (Humidity : 0%RH ~ 90%RH) | | | |
| Operating Temperature | -10℃ ~ +50℃ (Humidity : 0%RH ~ 90%RH) | | | |
| Dimensions | 55.6(W) x 64(H) x 124(D) | | | |
| Weight | 410g | | | |

* Design and specifications are subject to change without notice.

Pin Assignment



| J301 | |
|------|--------------------|
| 1 | TVI-OUT |
| 2 | GND |
| 3 | VBS-OUT |
| 4 | GND |
| 5 | |
| 6 | |
| 7 | |
| 8 | |
| 9 | |
| 10 | NC |
| 11 | |
| 12 | |
| 13 | |
| 14 | |
| 15 | |
| 16 | +5V-OUT |
| 17 | GND |
| 18 | GND |
| 19 | DC+12V |
| 20 | DC+12V |
| 21 | DC+12V |
| 22 | GND |
| 23 | GPIO2 |
| 24 | GPIO1 |
| 25 | ADKEY(OSD Control) |
| 26 | D/N-IN |
| 27 | IR-ON |
| 28 | MD-OUT |
| 29 | RS-485(-) |
| 30 | RS-485(+) |

Ref USL00-30L-C(KEL Cop.)

| J302 | |
|------|---------|
| 1 | RxD |
| 2 | TxD |
| 3 | GND |
| 4 | DC+12V |
| 5 | GND |
| 6 | VBS-OUT |
| 7 | GND |
| 8 | TVI-OUT |
| 9 | GND |

Ref 10019HR-09(YEONHO)

| J203 | |
|------|--------|
| - | HD-SDI |

Ref MMCX-R/A