



ELECTRONIC GROUP, INC

IP ZOOM MODULE

ML-KX10

Ver.1.0

1/2.8" Sony CMOS Image sensor(Rolling shutter)

2MP IP Streaming

60/50 fps, 30/25 fps

Color: 0.03 Lux @ (F.1.7, AGC ON), BW: 0Lux (IR LED)

Optical 10x, Digital 10x

256 zoom/focus presets

H.264 / H.265 / JPEG

HTTP RESTful API, Onvif



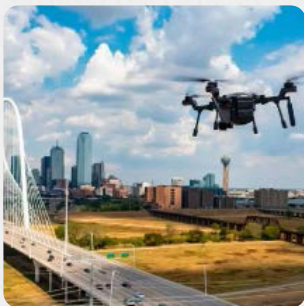
Aegis Electronic Group
www.aegiselect.com

Business Area

Network Performance

Network zoom camera module is a fully integrated network block camera including Image sensor, long range zoom lens, video encoding, video analysis and network transmission functions. It is designed to be flexible embedded into PTZ cameras, Machine Vision cameras, Robot systems, Intelligent Surveillance equipment, UAV drones. MLVision network zoom modules provide standard RJ45 cable and complete SDK/ISAPI protocols. It comes with intuitive WEB GUI and configuration tool.

MLVision, employing the industry-leading imaging technologies accredited in the ITS, Defense/Law Enforcement, Inspection, Machine Vision, Surveillance market and in-house manufacturing technologies for IP-based fast performance, now announces the release of a Compact Zoom Module with imaging enhancement features which assures high-quality image transmission when networked environment is crucial. The realized physical size and weight of the compact module are optimum for an extensive range of customization, including applications as ariel/ground/maritime drones, inspection, ITS, machine vision and security and surveillance applications



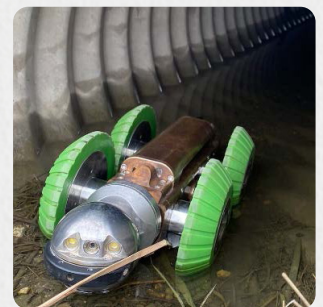
Unmanned Aerial, Ground & Maritime Vehicles

From peace time to war time or simple border surveillance applications, detailed, high-resolution imagery provides critical data for immediate decision support and post-processing

The integration of autonomous drones and robotic technology marks a turning point, heralding a transformative era in daily life

Inspection Applications

Carry out your inspections and observations independently of the client's requirements in detailed IP HD images. Inspect more coverage per deployment with HD image. Low cost of ownership can be achieved.



Military & Law Enforcement

Ensure dominance by delivering the most advanced ground sensors in the world.

Intended for integrators for land, Air and maritime applications. High performance integrated optronic solution, designed for vision from armoured vehicles and site surveillance

InterTraffic Management

Enables possibilities for seamless traffic control with Intelligent Traffic Management Solutions. Advanced traffic cameras empower incident response, streamline roadwork planning, and optimize traffic flow.

Proactively monitor road hazards such as weather, potholes, wildlife, and flooding with our high-quality network solutions. Empower immediate action with clear visualizations day or night.

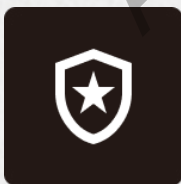


Machine Visions and Robotics

Give industrial equipment the ability to "see" what it is doing and make rapid decisions based on what it sees. From visual inspection and defect detection, positioning and measuring parts, and identifying, sorting to tracking products.

Industrial machine vision is the backbone of smart manufacturing, logistics, and operations. Machine vision cameras, embedded IoT sensors, and industrial PCs can bring intelligence, analysis, and efficiency to every step of the manufacturing process.

Industries We Specialize In



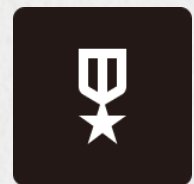
Public Safety



Oil & Gas



Federal
Government



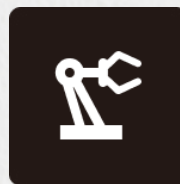
Military &
Law Enforcement



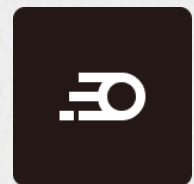
Agriculture



Construction &
Engineering



Inspection &
Manufacturing



Roads &
Railways

ML-KX10

Image Sensor

Sensor	1/2.8" Sony CMOS Image sensor(Rolling shutter)
Total pixels	2,014(H) x 1,196(V) = 2.4M Pixels
Effective pixels	1,965(H) x 1,113(V) = 2.18M Pixels
Resolution	1920 x 1080
Frame Rate	60/50 fps, 30/25 fps
Min. Illumination	Color: 0.03 Lux @ (F1.7, AGC ON), BW: 0Lux (IR LED)

Lens

Zoom Ratio	Optical 10x, Digital 10x
Focal Length	f = 4.8mm ~ 40.8mm
Aperture ratio	F1.7(wide) ~ F3.1(tele)
Angle Of View	H : 62°(W) ~ 7.6°(T) / V : 36.4°(W) ~ 4.4°(T) / D : 69.2°(W) ~ 8.6°(T)
Min. Distance	1m(Wide), 2m(Tele)
Iris	DC auto iris(TBA)
IR Cut Filter	On/ Off

Function

Focus Control Mode	- Auto Focus Mode(Zoom Trigger, Timer Trigger, One Push) - Manual Mode(Slide Control, One Push)
Presets	256 zoom/focus presets(TBA)
Day & Night	Auto, Day, Night, Ext-in
D&N Levels	10 levels (without Ext-in)
Electronic Shutter Speed	1/25(30)/1/50(60) ~ 1/5,000
White Balance Modes	Auto, Manual (3 steps or more)
Exposure Modes	Auto Mode , Manual Mode, Indoor Mode 50Hz / 60Hz(Flicker-Free)
Gain control	Auto / Manual
WDR	On/ Off
BLC	On/ Off
HLC	On/ Off
DNR	2D&3D
Defog	Off / Low / Middle / High
DIS	On/ Off(TBA)
Mirror	Off, Vertical Flip, Horizontal Flip, H+V Flip (180degree rotation)
Privacy Mask	Max 8 Zones
Motion detection	32 x 18 cell / AI motion detection(TBA)
Output Format	H.264 / H.265 / JPEG
Bitrate	512~15000 kbps

Streaming	Quadruple (x4) IP Streaming Main Stream : up to 1920 x 1080 Second Stream : up to 1280 x 720 Third Stream : up to 640 x 480(TBA) JPEG : 1920 x 1080
OSD	Title, Date, Resolution
Main UI	Web-based GUI
System Mode	NTSC / PAL
Recording	
Video	TBD
JPEG	TBD
AI	
Rule Engine / Tracker	-
Video analytics	-
Audio	
Compression	G.711 ulaw
Sampling rate	8khz
Input & Output	1 line In / 1 Line Out
Network	
Interface	10BASE-T/100BASE-TX
Protocol	IPv4, IPv6, IGMP, ICMP, ARP, TCP, UDP, DHCP, RTP, RTSP, RTCP, DNS, NTP, SMTP, FTP, UPnP(TBA), HTTP, HTTPS, SSL/TLS
Security	Password protection, IP address filtering, Https encryption, brute force delay protection
Control Protocol	HTTP RESTful API, Onvif
General	
External devices	1x Alarm input 1x Alarm output 1x D&N input(Ext-in) 1x PWM output(lighting control) 1x UART
External Storage	Micro SD
Power Supply	12V
Power consumption	Max. 3.6W
Storage Temperature	-20°C ~ +60°C (Humidity < 90%RH, Non-condensing)
Operating Temperature	-10°C ~ +50°C (Humidity < 90%RH, Non-condensing)
Dimension	47 x 47 x 64.4 (WxHxD)
Weight	155g
Certifications	NA

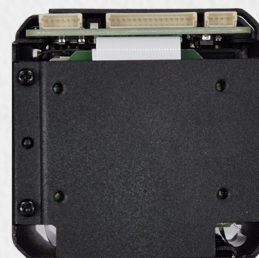
Pictures



Front

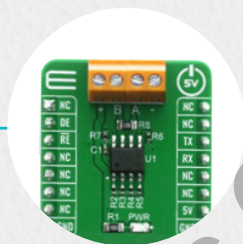
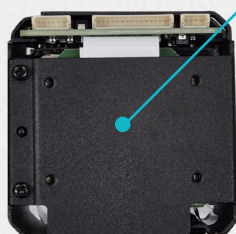


Left



Rear

Optional Add-on Board



RS485 Transceiver can be installed on the rear of the module

Dimensions

