



computar

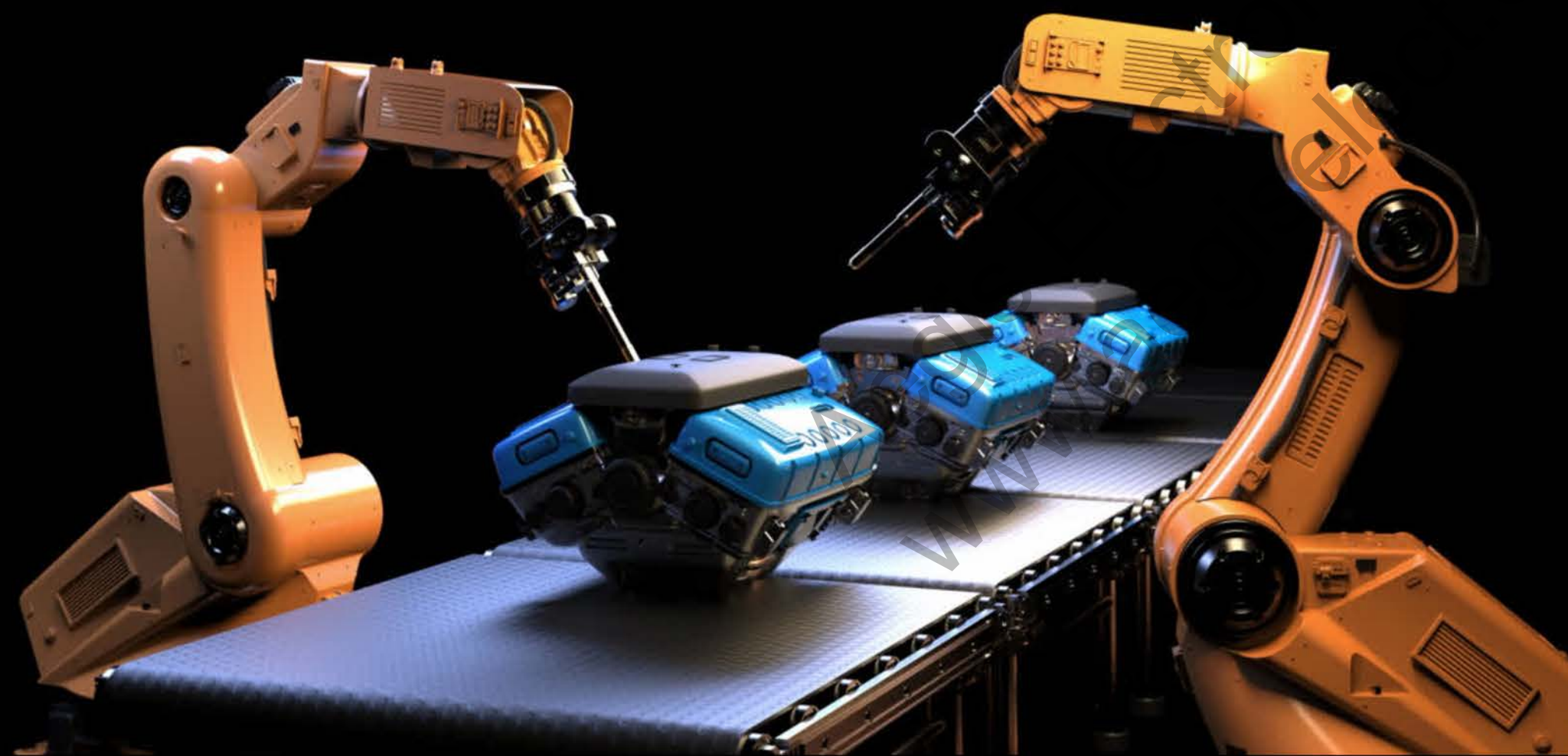
For more than 40 years, Computar Optics, part of the CBC Group global conglomerate, has been a leader in developing innovative lenses worldwide.

With its technical expertise, Computar Optics consistently engineers superior optics and custom lenses.

The world
standard for lenses.

computar

Machine Vision Inspection Basics



- Industrial automation
- Precision and reliability

Industries

Automotive

Inspecting parts, robotic guidance, and quality control.

Pharmaceuticals

computer

Pill inspection, packaging verification, and compliance with safety regulations.

Food and Beverage

Automated food inspection processes for quality standards.

Aegis Electronic Group
www.aegiselect.com

Aerospace

Maintain the highest quality, minimize errors, and maximize efficiency.

Regular inspections and rigorous testing

computer

Other Industries

Manufacturing: Logistics Automation

Oil & Gas: Inspection with robots & drones
and more...

The Ruggedized Machine Vision Lens

Durability and Reliability

- Chemical and Dust Protection
- Shock and Vibration Resistance

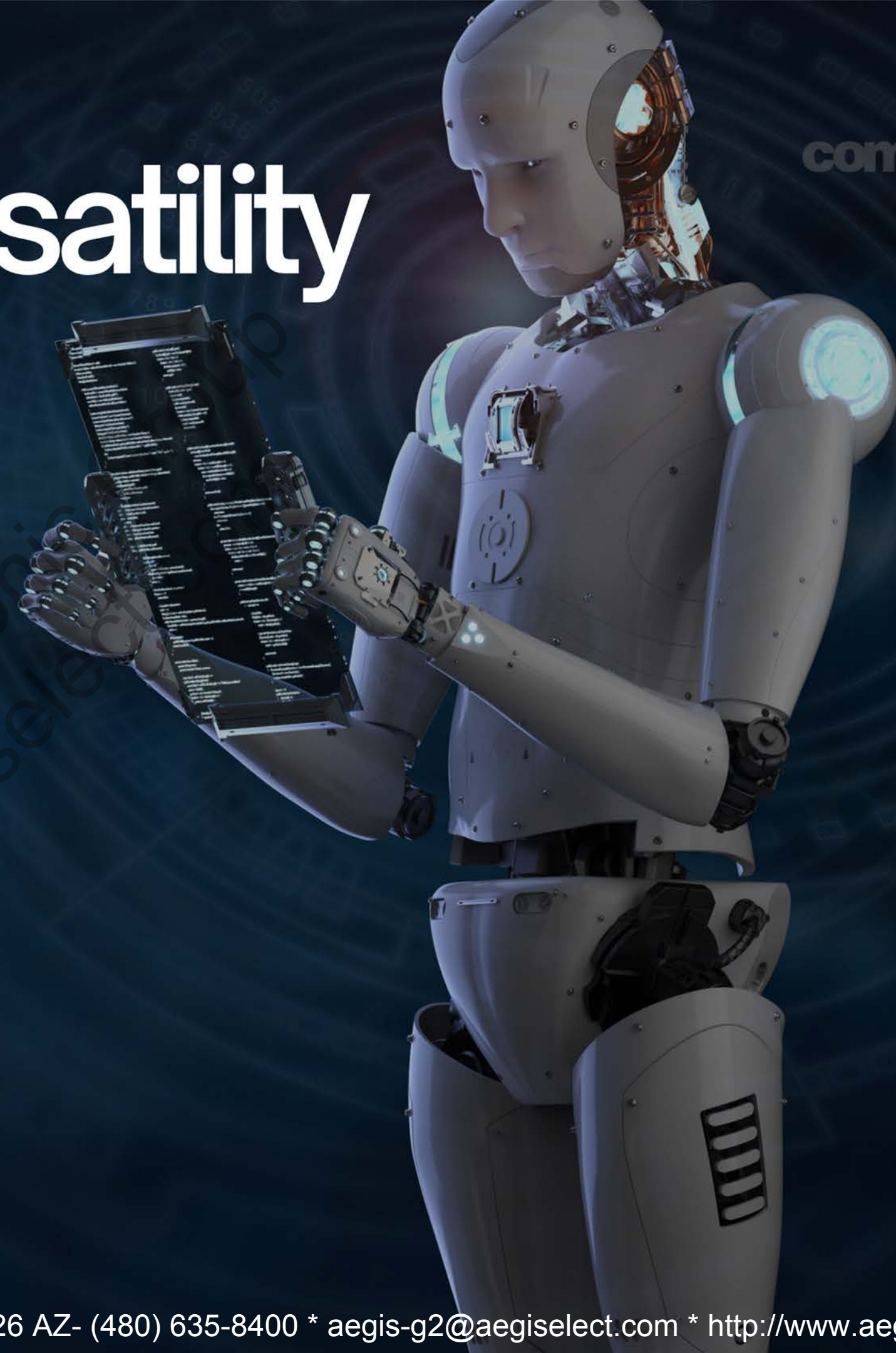
High Optical Performance

- Longevity: Longer operational life reduces the need for replacements and downtime.
- Precision Engineering: High optical standards for sharp and accurate imaging.

Adaptability & Versatility

computar

- Wide Range of Applications
- Compatibility



How to Choose a Ruggedized Machine Vision Lens

- **Application Requirements**
- **Sensor Compatibility**
- **Field of View (FOV) and depth of field**
- **Cost vs. Performance**

The MPX Series

16MP Ruggedized Machine Vision Lens Series



- 2/3" ruggedized mechanical design minimizes image aberrations.
- 8mm, 12mm, 16mm, 25mm, 35mm, 50mm, and 75mm models



Mechanical Design

Floating design for excellent image quality from MOD to infinity

RUGGEDIZED
FOR MACHINE VISION

For More Information Please Call Aegis Electronic Group, Inc. *CA-

computer

Standard Lens

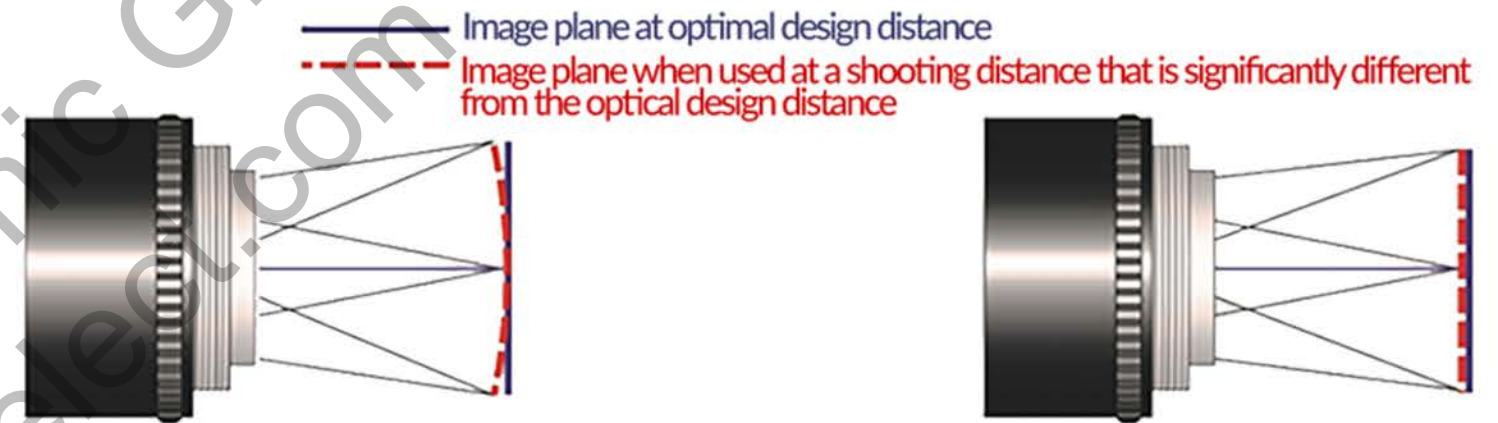
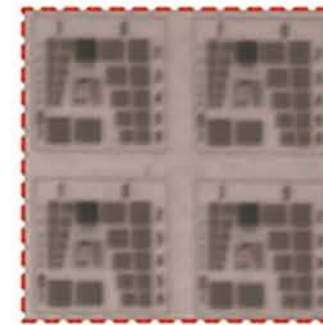


Image peripheral image quality (Standard Lens)



Floating Lens

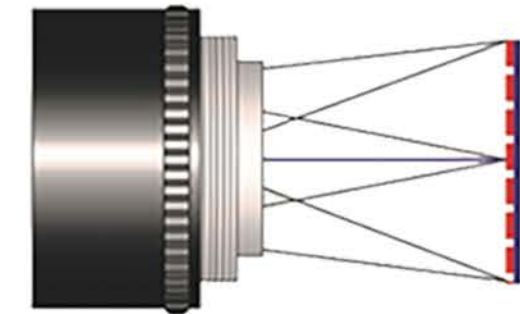
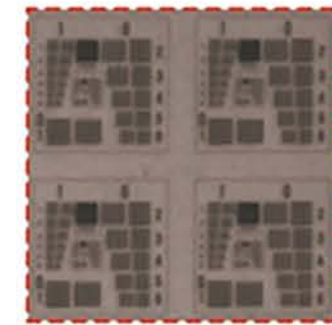


Image peripheral image quality (Floating Lens)



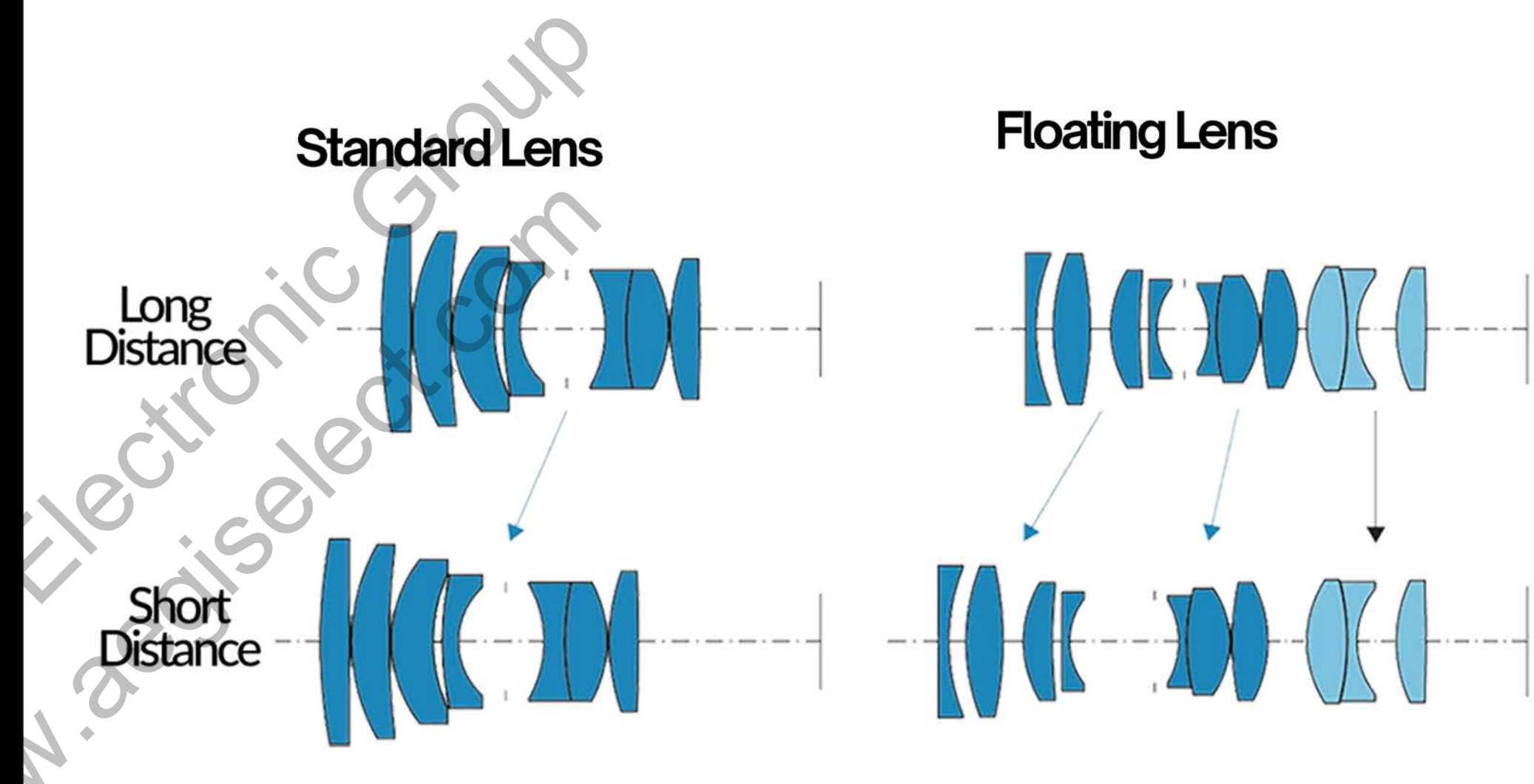
Mechanical Design

Floating design for excellent image quality from MOD to infinity



For More Information Please Call Aegis Electronic Group, Inc. *CA-

computer



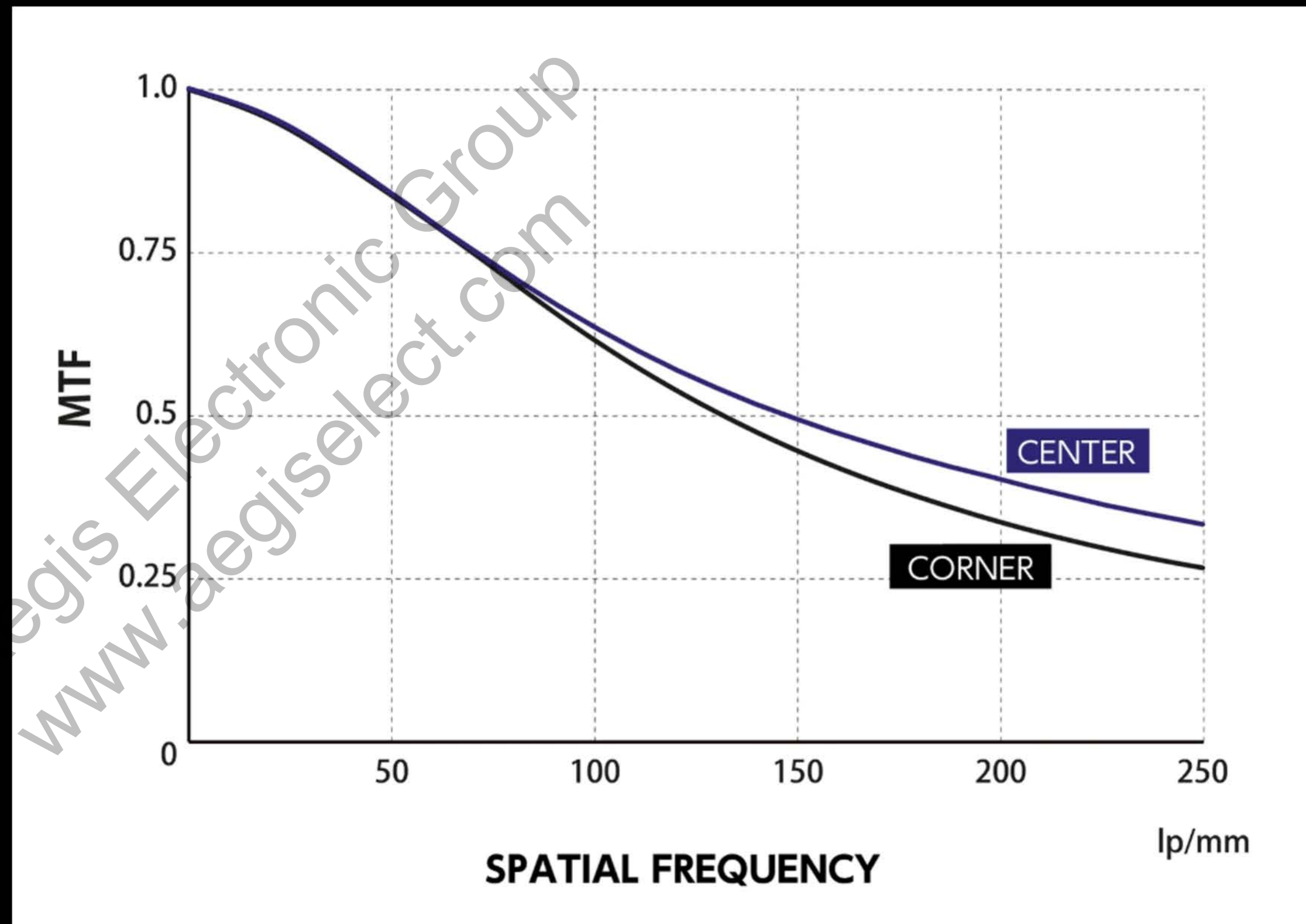
www.aegiselect.com

Lens Capabilities



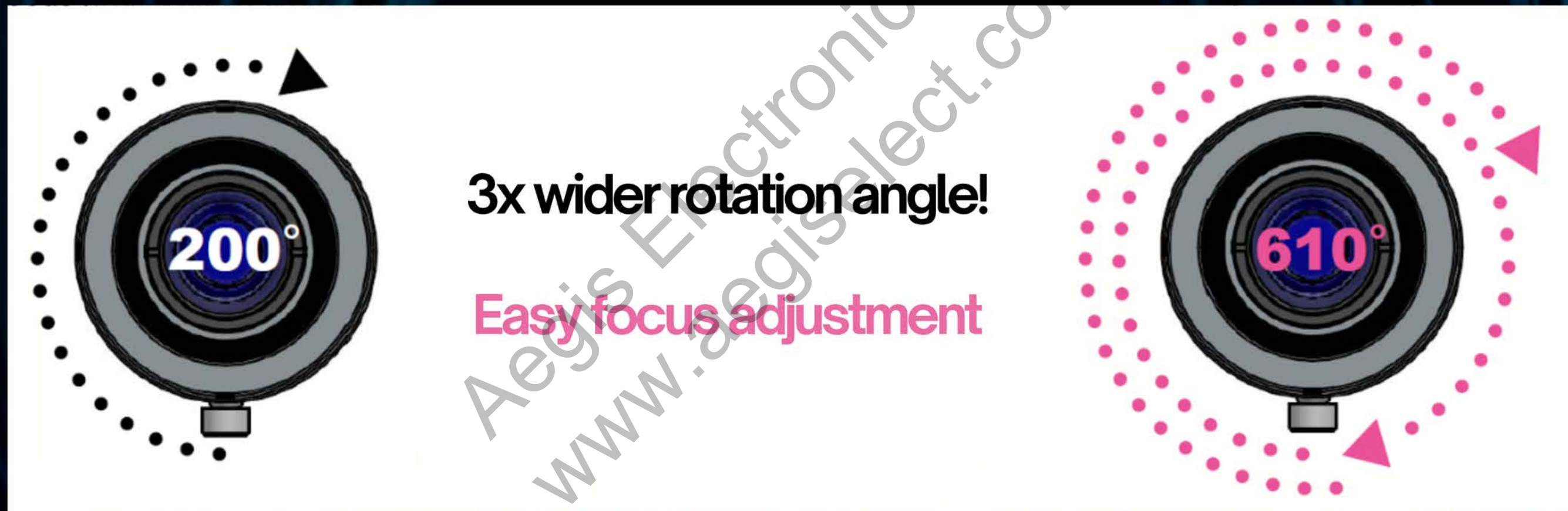
Spatial Frequency

- High-resolution supports pixel size of 2um or less



Precise Focus

A focus rotation angle three times that of conventional models for precise focus adjustment



Standard Lens

Focus ring rotation angle: 200 degrees

MPX

Focus ring rotation angle: 610 degrees

Compatibility and Iris Control

2/3" format

Manual iris control
for precise light
adjustments

Optimized for

- IMX536 (546/566)
- IMX537 (547/566)
- IMX676/IMX266/IMX17
- Sony 4th Generation Pregius S sensors.



MPX Product Lineup

Model	Focal Length	F-Stop
M0828-MPX	8mm	F2.8 - F16.0
M1228-MPX	12mm	F2.8 - F16.0
M1628-MPX	16mm	F2.8 - F16.0
M2528-MPX	25mm	F2.8 - F16.0
M3528-MPX	35mm	F2.8 - F16.0
M5028-MPX	50mm	F2.8 - F16.0
M7538-MPX	75mm	F3.8 - F16.0



The MPZ-R Series

20MP Ruggedized Machine Vision Lens Series



- 1" ruggedized mechanical design minimizes image aberrations.
- 8mm, 12mm, 16mm, 25mm, 35mm, 50mm, and 75mm models
- Anti-vibration (10G) and Anti-Shock (10G) resistance to harsh environments
- 2.4um compatible high-resolution lens
- Excellent image quality from MOD to infinity by adopting a floating design
- Compact & lightweight
- Ultra-low distortion

RUGGEDIZED
FOR MACHINE VISION