

VTC-TNB8MADW
Transcendent Knight Guard Active
Deterrence 8MP (4K) Advanced A.I.
Motorized AF Bullet Camera

QUICK START GUIDE



FEATURES:

- 1/1.8" 8.0 MegaPixel (4K) CMOS Image Sensor
- Full Color at Night Camera with Active Deterrence
- Up to 30fps @ 8MP (3840 × 2160)
- 2.8~12mm Motorized AF Lens
- White Light + Matrix IR (165' Range)
- GEN IV Advanced Analytics including Face Detection
- Integrated Audio + Speaker*
- MicroSD Card Slot (256GB)
- IP66 Weather Resistance
- 12VDC + PoE Operation
- 3-Year Warranty

*Please research local, state and federal laws regarding the implementation of audio surveillance.



Components and Accessories



Camera



4 Tapping Screws PA4x25
1 Machine Screw PWM3x5



CVBS & DC
Cables



Hex Wrench

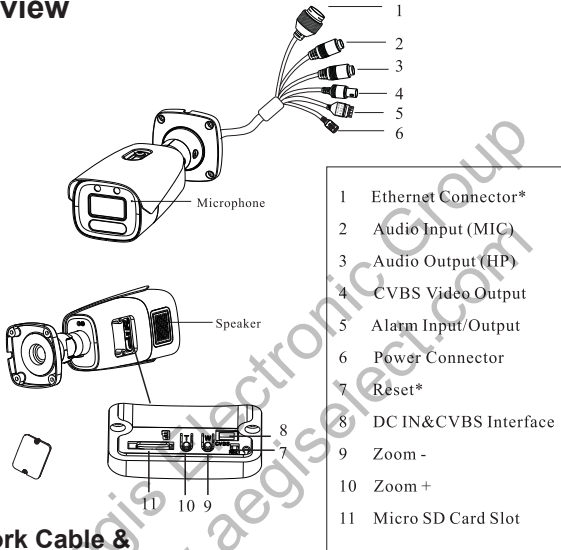


Drill Template



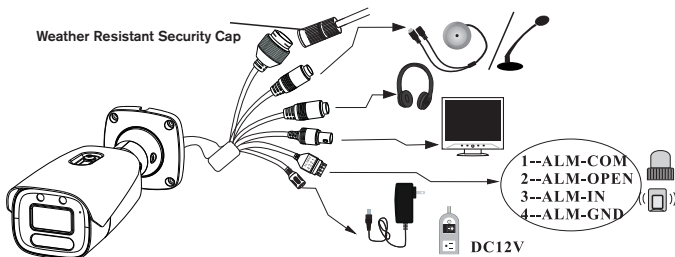
4 Anchors

Overview



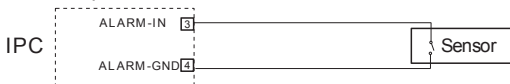
Network Cable & Power Connections

First connect the Weather Resistant Cap to an Ethernet patch cable, then connect the camera's ethernet adaptor. If not powering the camera with PoE, also connect the power Cable to an approved 12VDC power supply.

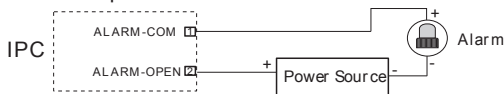


Connecting Alarm Input/Output

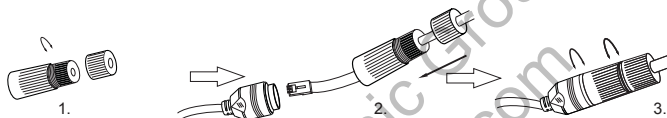
Alarm Input



Alarm Output



Weather Resistant Network Coupler

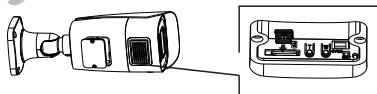


1. Loosen the nut from the Weather Resistant Network Coupler,
2. Run ethernet cable through coupler, then attach a RJ-45 connector.
3. Tighten the nut and coupler for a weather resistant seal.

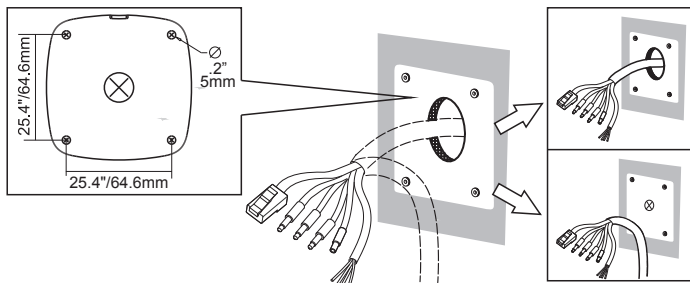
Installation

Before beginning installation, make sure that the wall or ceiling is strong enough to withstand 3 times the weight of the camera. The mounting steps are as follows:

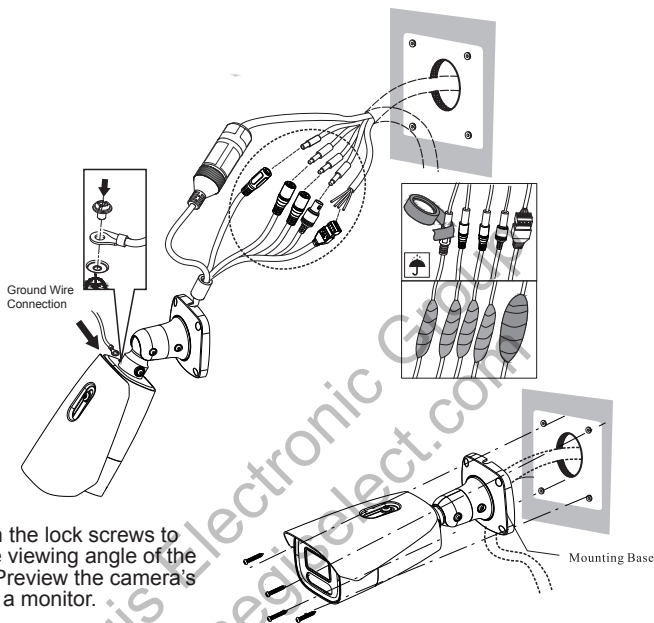
1. Install a MicroSD Card



2. Attach the drill template to the place where you want to install the camera, then drill 4 screw holes and 1 cable hole (if you want to route the cables through the mounting base) according to the drill template.

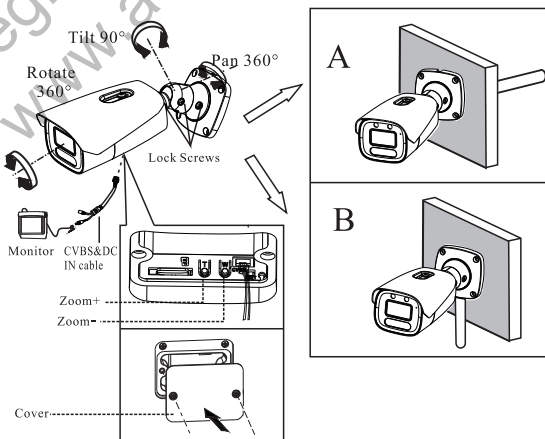


3. Route the cables and connect the power & video cables, use the rubber plug to fill the gap of the mounting base, then secure the mounting base to the ceiling or wall with screws.

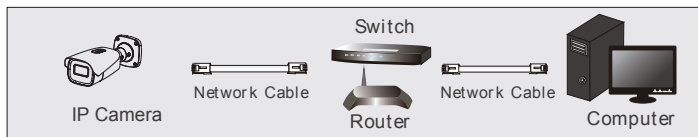


4. Loosen the lock screws to adjust the viewing angle of the camera. Preview the camera's image on a monitor.

5. Press T or W buttons to obtain an optimum image. Finally, re-install the cover.



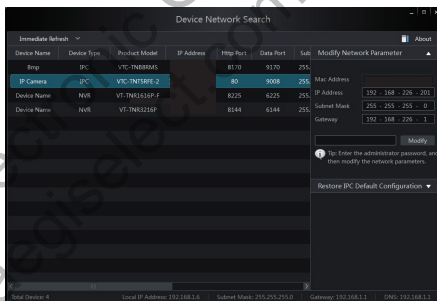
LAN Configuration



The camera can be accessed on the local network either using the IP-Tool or directly in a web browser.

Accessing the Camera Using the IP-Tool

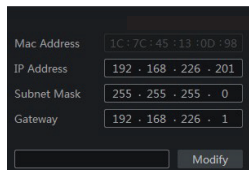
1. Make sure the camera and PC are connected to the LAN.
2. Locate the IP-Tool installer at www.vitekccctv.com/Downloads/Software/Transcendent-IPTool.zip, then install on the PC. Open the installed application.



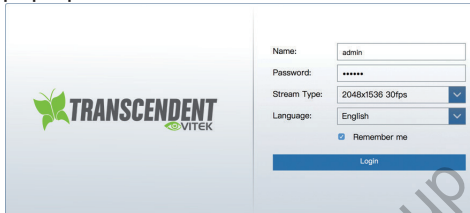
3. Modify the IP address. The default IP address is 192.168.226.201. Click the information of the camera listed in the above table to show the network information on the right side. Modify the IP address and gateway of the camera and make sure its network address is in the same local network segment as the computer's. Please modify the IP address of your device according to the practical situation.

For example, the IP address of your computer is 192.168.13.4. So the IP address of the camera should be changed to 192.168.13.X. After modifying, please input the password of the administrator and click "Modify" button to modify the setting.

** Default admin password: "123456".



4. Double-click the IP address and then the system will pop up the web browser to connect IP-CAM. Edge in IE mode / IE browser will download the Active X. control. After downloading, a login window will pop up as shown below:



Input the user name and password to log in.
Default user name: admin / Default password: 123456.

Directly Access Through a Web Browser

The default network settings are as shown below:

IP address: 192.168.226.201 HTTP: 80

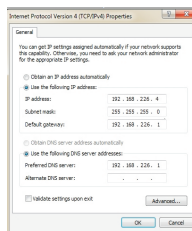
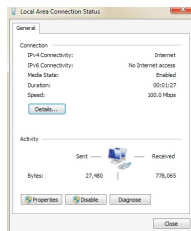
Subnet Mask: 255.255.255.0 Data Port: 9008

Gateway: 192.168.226.1

You may use the above default settings when you log in the camera for the first time.

1. Manually set the IP address of the PC. The network segment should be the same as the default settings of IP-CAM. Open the network and share center. Click “Local Area Connection” to pop up the following window.

Select “Properties” and then select Internet protocol according to the actual situation (for example: IPV4). Next, click “Properties” button to set the network of the PC.



- Open Edge in IE mode / IE browser and input the default address of IP-CAM and confirm. Edge in IE mode / IE browser will download an Active X control.
- After downloading the Active X control, the login Tbox will appear.
- Input the default username and password and then enter to view.

WAN Configuration

Access the camera by the router or virtual server for example.

- Make sure the camera is connected to the LAN; Then log into the camera via LAN and go to System Config→Network Config→Port menu to set up the port number.
- Enter System Config→Network Config→IP Address menu to modify the IP address.

Port Server DDNS SNMP 802.1X RTSP UPn

HTTP Port

HTTPS Port

Data Port

RTSP Port

Save

- Go to the router's management interface through IE browser to forward the IP address and port of IP-CAM in the "Virtual Server".

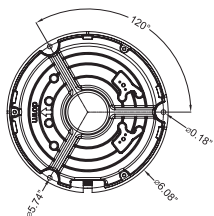
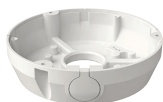
Port Range						
Application	Start	End	Protocol	IP Address	Enabled	
1	9008	9008	Both	192.168.6.6	<input checked="" type="checkbox"/>	
2	80	81	Both	192.168.6.6	<input checked="" type="checkbox"/>	
3	10000	10001	Both	192.168.6.166	<input type="checkbox"/>	
4	21000	21001	Both	192.168.6.156	<input type="checkbox"/>	
5	7777	7778	Both	192.168.6.206	<input type="checkbox"/>	
6	1029	1030	Both	192.168.6.207	<input type="checkbox"/>	

- Open the web browser and input its WAN IP and HTTP port to access the IP-CAM.

Image Sensor	1/1.8" 8.0 MegaPixel (4K) Progressive Scan CMOS
Image Size	8 MegaPixel (3840 x 2160)
Resolution	8MP(3840x2160), 6MP(3072x2048), 5MP(2592x1944), 4MP(2592x1520), 2K (2560x1440), 3MP (2304x1296), 1080P(1920x1080), 720P(1280x720), D1, VGA,(640x480), CIF, 480 x 240
Frame Rate	30fps @ 8MP and Lower
Main-Stream	30fps @ 8MP/6MP/5MP/4MP/2K/3MP/1080P/720P (50Hz: 1~25fps)
Sub-Stream	30fps @ 1080P/720P/D1/VGA/CIF (50Hz: 1~25fps)
Third-Stream	30fps @ D1/VGA/CIF/480x240 (50Hz: 1~25fps)
Min. Illumination	0.006lux @ F1.4 with AGC ON, 0 lux with IR, 0 lux with LED
Lens	2.8~12mm @ F1.4, H FoV: 113~46°, V FoV: 59~26°, D FoV: 136~54° - M14 Mount
Angle Adjustment	Pan: 0°~360°, Tilt: 0°~90°, Rotation: 0°~360°
S/N Ratio	≥50dB
Day / Night	True Day / Night by ICR
Night Vision / Range	White Light or Matrix IR / Up to 165'
Video Compression	H.265+ / H.265 / H.264+ / H.264 / MJPEG (Triple Streaming)
Audio Compression	G.711A / G.711U
Audio	1Ch. Audio Input, 1Ch. Audio Output + Built-in Speaker + Built-in Microphone
Alarm	1Ch. Alarm Input, 1Ch. Alarm Output
CVBS Video Out	Yes
Bit Rate / Type	64 Kbps ~ 12 Mbps / VBR, CBR
Wide Dynamic Range	120dB Super WDR
Other Features	Highlight Compensation, Backlight Compensation, DeFog, Hardware Reset
Digital Noise Reduction	XD-DNR (3D-DNR & 2D-DNR)
Image Setting	ROI, Saturation, Brightness, Hue, Contrast, Wide Dynamic Range Sharpness, Image Flip, Image Mirror, Noise Reduction (Adjustable through client software or web browser)
Advanced Analytics	Intrusion Detection, Line Crossing, Target Counting [All by Human / Motor Vehicle Classification], Face Detection, Scene Change, Video Blur, Abnormal Color Detection, Heat Map
Smart Alarm	Motion Detection, Sensor Alarm, SD Card Error, SD Card Full, IP Address Conflict, Cable Connection
Region of Interest (ROI)	Each ROI to be Configured Separately
Sound / Light Warning	Flashing White Lights + Speaker with User-Defined Warning Voice Import
DORI	Detect: 249' (76m), Distance: 102' (31m), Recognize: 49' (15m), Identify: 26' (8m)
Local Storage	Built-in MicroSD Card Slot (up to 256GB)
Remote Viewing	VMS / Web Browser / Mobile (iOS/Android)
Online Connection	Support Simultaneous Monitoring for up to 10 Users, Support multi-stream real time transmission
Supported Browsers	IE or Edge in IE mode
Network Connection	RJ 45 10M/100M Self-Adaptive Ethernet port
Network Protocols	UDP, IPv4, IPv6, DHCP, NTP, RTSP, RTP, RTCP, PPPoE, DDNS, SMTP, FTP, SNMP, RTMP, HTTP, 802.1x, UPnP, HTTPS, HTTP POST, QoS
Connection Protocol	ONVIF
Ingress Protection	IP66
Security	Video Encryption, Firmware Encryption, HTTPs Encryption, Configuration Encryption, Illegal Login Lock, IP Address Filtering, 802.1x Authentication, Basic and Digest Authentication for HTTP/HTTPS
PoE	Yes , IEEE802.3af
Power Input	12VDC / PoE
Pwr Consumption (PoE)	<14W
Pwr Consumption (12VDC)	600mA (LEDs Off) / 1200mA (LEDs On)
Working Environment	-22° ~ 140°F (-30°~60°C) / < 95% Humidity
Storage Environment	-22° ~ 140°F (-30°~60°C) / < 95% Humidity
Weight NET (GROSS)	23.99oz / 1.50lb / 1040g, (29.27oz / 1.83lb / 1200g)
Dimensions L x W x H	10.96" x 3.95" x 3.49" (278.3mm x 100.2mm x 88.7mm)
Certificates	CE, FCC - Complies with Directive EU RoHS, WEEE(2012/19/EU), Directive 94/62/EC and REACH(EC1907/2006)

**OPTIONAL ACCESSORIES
AND RELATED PRODUCTS
FOR VTC-TNB8MADW**

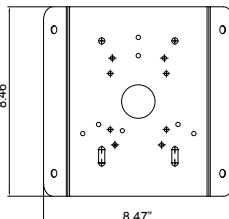
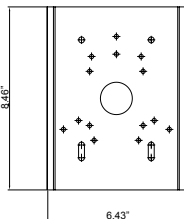
VT-TJB01
Optional Junction Box



VT-TPLMT
Transcendent Universal
Pole Mount (reqs. VT-TJB01)



VT-TCNMT
Transcendent Universal
Corner Mount (reqs. VT-TJB01)





**OPTIONAL ACCESSORIES AND
RELATED PRODUCTS FOR
NDAA COMPLIANT
TRANSCENDENT IP CAMERAS**

TRANSCENDENT NVRs!

***A Standalone Solution with GEN. IV
Advanced Analytic Support and NDAA
Compliance!***



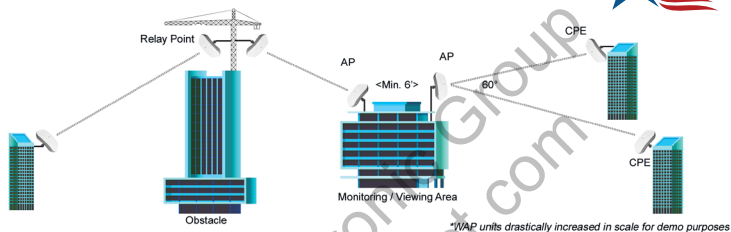
- **8MP (4K) HDMI Output**
- **H.265S / H.265+ / H.265 / H.264 Video Compression**
- **GEN IV Analytic Support Including Face Detection, Target Counting, Heat Map, and More!**
- **Available in 4, 8, and 16, 32, 64, and 128 Channels**
- **Up to 96TB Depending on Model (12TB per HDD)**
- **PoE Support Available (Model Dependent)**



**An Eye On
Innovation**

Also Consider Vitek NDAA Compliant Wireless Access Points to Reduce Costly Cable Installation!

VT-WAP1150 and VT-WAP2150 High Speed 5.8GHz DIP AP / CPE Wireless Bridge w/ 8MB Storage, 64MB RAM, 150Mbps transmission, and Point-to-Multi-Point (P2MP) Topology



With high speed transmission of 150Mbps and a wireless range of **3000ft.** (VT-WAP1150) and **1.25 miles** (VT-WAP2150) these products eliminate the need for expensive and troublesome long-distance cables in areas where CCTV monitoring and rigorous surveillance take place. These small, lightweight and durable units are easy to install and easy to use with an innovative and straight forward 10-button plug-and-play dip switch that facilitates the creation of a robust wireless network without a computer. Set-up can be simply configured for point-to-point or point-to-multipoint topology depending on the application, with up to 128 IP group configurations!



VT-WAP1150

VT-WAP2150



LIMITED PRODUCT WARRANTY

VITEK products carry a three (3) year limited warranty. VITEK warrants to the purchaser that products manufactured by VITEK are free of any rightful claim of infringement or the like, and when used in the manner intended, will be free of defects in materials and workmanship for a period of three (3) years, or as otherwise stated above, from the date of purchase by the end user. This warranty is nontransferable and extends only to the original buyer or end user customer of a VITEK Authorized Reseller.

The product must have been used only for its intended purpose, and not been subjected to damage by misuse, willful or accidental damage, caused by excessive voltage or lightning.

The product must not have been tampered with in any way or the guarantee will be considered null and void.

This guarantee does not affect your statutory rights.

Contact your local VITEK Reseller should servicing become necessary.

VITEK makes no warranty or guarantee whatsoever with respect to products sold or purchased through unauthorized sales channels. Warranty support is available only if product is purchased through a VITEK Authorized Reseller.

Version 1.0
July 2023