

VTD-TND4FLN-2
Transcendent Series
4 MegaPixel Fixed IP WDR
Vandal Dome Camera

QUICK START GUIDE



FEATURES:

- 1/3" 4.0 Megapixel CMOS Image Sensor
- Up to 30fps @ 4MP (2560 × 1440), 3MP (2304 × 1296), 1080P (1920 × 1080), 720P (1280 × 720), D1, CIF, 480 × 240
- 2.8mm Fixed Iris Lens
- Matrix IR with up to 100' IR Range
- True 120dB Wide Dynamic Range
- True Mechanical Day/Night function by ICR
- XD-DNR (3D & 2D-DNR) Noise Reduction
- Built-in Mic*
- Programmable Analytics: Region Intrusion Detection, Object Removal / Missing, Scene Change Detection, Line Crossing, Video Blur, Video Cast Detection
- Compression - Main stream: H.265+ / H.265 / H.264+ / H.264
- Compression - Sub stream: H.265+ / H.265 / H.264+ / H.264 / MJPEG
- MicroSD Card Slot for Local Recording (Up to 256GB)
- Remote Viewing via CMS, Internet Explorer, and iOS & Android Apps
- ONVIF Compliant
- IP67 Weather Resistance + IK10 Impact
- Optional Junction Box (VT-TJB03A), Wall Mount (VT-TWMT3), Pendant Mount (VT-TPDM-1 [reqs. VT-TJB03A]) and In-Ceiling Semi Flush Mount(VT-TFMT-S) Available
- 12VDC & PoE (Power over Ethernet) Operation

*Please research local, state and federal laws regarding the implementation of audio surveillance.



Components and Accessories



Camera



Quick start guide



4 tapping screws PA 4×2



Rubber plug



Screwdriver

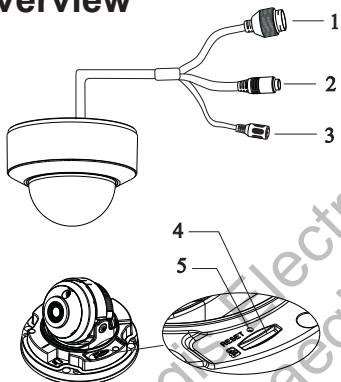


Drill template



Plastic plug ×4

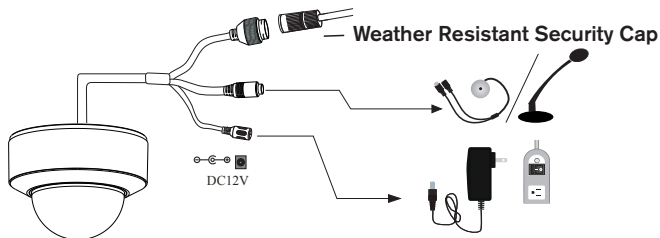
Overview



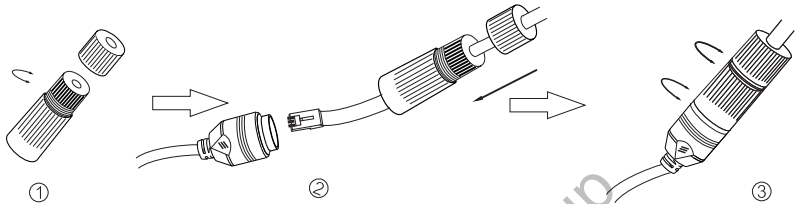
- | | |
|---|--------------------|
| 1 | Ethernet connector |
| 2 | Audio input |
| 3 | Power connector |
| 4 | Micro SD Card Slot |
| 5 | Reset |

Cable Connections

First connect the weather resistant cap to an ethernet patch cable, then connect the cameras ethernet adaptor. If not powering the camera with PoE, also connect the power Cable to an approved 12VDC power supply.



Weather Resistant Network Coupler

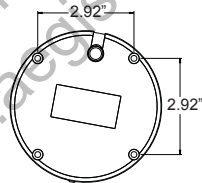


1. Loosen the nut from the Weather Resistant Network Coupler.
2. Run ethernet cable through coupler, then attach a RJ-45 connector.
3. Tighten the nut and coupler for a weather resistant seal.

Installation

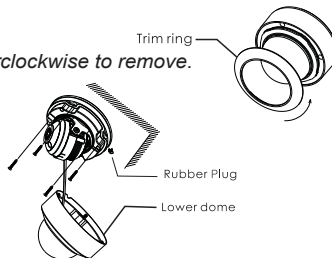
Before beginning installation, make sure that the wall or ceiling is strong enough to withstand 3 times the weight of the camera. The mounting steps are as follows:

1. Attach the drill template to the place where you want to install the camera, then drill the screw holes and 1 cable hole according to the drill template.

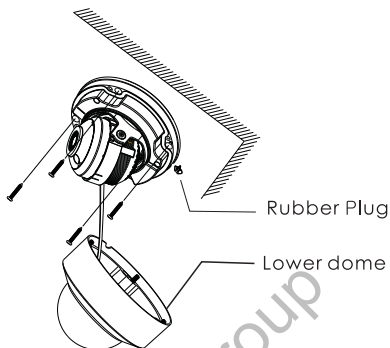


1A. Rotate the trim ring counterclockwise to remove.

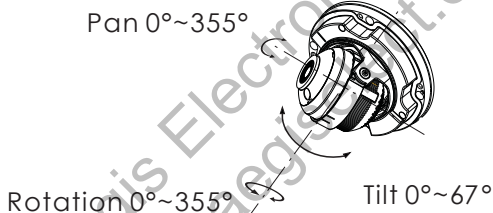
2. Loosen the screws to open the lower dome and then loosen the lock screw to remove the mounting base.



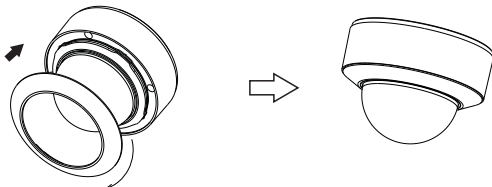
3. Route the cables and connect the power & video cables, use the rubber plug to fill the gap of the mounting base, then secure the mounting base to the ceiling or wall with screws.



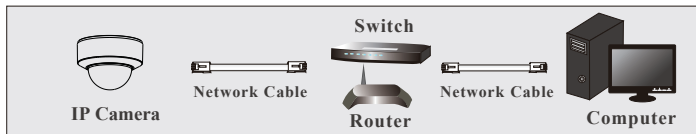
4. Before adjusting the three-axis camera mount, preview the camera on a monitor, then adjust as necessary achieve the optimum viewing angle.



5. Install the lower dome on the camera with the included screws, then put the trim ring back on the lower dome and rotate clockwise until it locks.



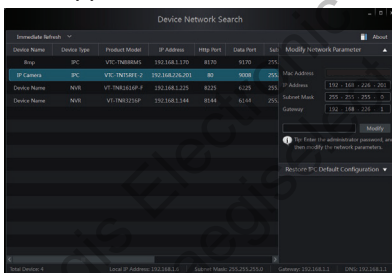
LAN Configuration



The camera can be accessed on the local network either using the IP-Tool or directly in a web browser.

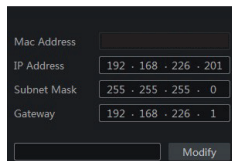
Accessing the Camera Using the IP-Tool

1. Make sure the camera and PC are connected to the LAN.
2. Locate the IP-Tool installer at www.vitekccv.com/Downloads/Software/Transcendent-IPTool_v2.0.2.zip, then install on the PC. Open the installed application.



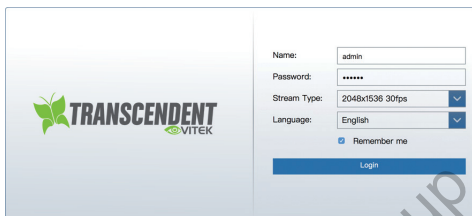
3. Modify the IP address. The default IP address is 192.168.226.201. Click the information of the camera listed in the above table to show the network information on the right side. Modify the IP address and gateway of the camera and make sure its network address is in the same local network segment as the computer's. Please modify the IP address of your device according to the practical situation.

For example, the IP address of your computer is 192.168.13.4. So the IP address of the camera shall be changed to 192.168.13.X. After modification, please input the password of the administrator and click "Modify" button to modify the setting.



** Default admin password: "123456".

4. Double-click the IP address and then the system will pop up the web browser to connect IP-CAM . IE browser will download the Active X control. After downloading, a login window will pop up as shown below:



Input the user name and password to log in.
Default user name: admin / Default password: 123456.

Directly Access Through a Web Browser

The default network settings are as shown below:

IP address: 192.168.226.201 HTTP: 80

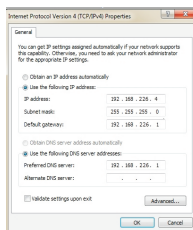
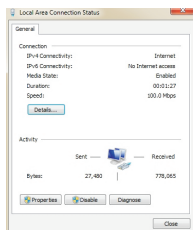
Subnet Mask: 255.255.255.0 Data Port: 9008

Gateway: 192.168.226.1

You may use the above default settings when you log in the camera for the first time.

1. Manually set the IP address of the PC. The network segment should be the same as the default settings of IP-CAM. Open the network and share center. Click “Local Area Connection” to pop up the following window.

Select “Properties” and then select Internet protocol according to the actual situation (for example: IPV4). Next, click “Properties” button to set the network of the PC.



- Open the IE Browser and input the default address of IP-CAM and confirm. The IE browser will download Active X control.
- After downloading Active X control, the login dialog box will pop up.
- Input the default username and password and then enter to view.

WAN Configuration

Access the camera by the router or virtual server for example.

- Make sure the camera is connected to the LAN; Then log into the camera via LAN and go to System Config→Network Config→Port menu to set up the port number.
- Enter System Config→Network Config→IP Address menu to modify the IP address.

Port Server DDNS SNMP 802.1X RTSP UPn

HTTP Port	80
HTTPS Port	443
Data Port	9008
RTSP Port	554

Save

- Go to the router's management interface through IE browser to forward the IP address and port of IP-CAM in the "Virtual Server".

Port Range						
Application	Start	End	Protocol	IP Address	Enable	
1	9008	to 9008	Both	192.168.6.6	<input checked="" type="checkbox"/>	<input checked="" type="checkbox"/>
2	80	to 81	Both	192.168.6.6	<input checked="" type="checkbox"/>	<input checked="" type="checkbox"/>
3	10000	to 10001	Both	192.168.6.166	<input type="checkbox"/>	<input type="checkbox"/>
4	21000	to 21001	Both	192.168.6.156	<input type="checkbox"/>	<input type="checkbox"/>
5	7777	to 7778	Both	192.168.6.206	<input type="checkbox"/>	<input type="checkbox"/>
6	1029	to 1030	Both	192.168.6.207	<input type="checkbox"/>	<input type="checkbox"/>

- Open the web browser and input its WAN IP and HTTP port to access the IP-CAM.
- For additional setup, features and functions, please scan the QR code on the front page of this quick guide and download the complete manual.

VTD-TND4FLN-2 Detailed Specifications

Image Sensor, Size	1/3" 4.0 Megapixel CMOS Image Sensor
Resolution	4MP(2560 × 1440), 3MP(2304 × 1296), 1080P(1920 × 1080), 720P(1280 × 720), D1, CIF, 480 × 240
Min. Illumination	0.005 lux @F1.6, AGC ON; 0 lux with IR
Lens	2.8mm Fixed Iris Lens
Day / Night	True Day/Night by ICR
IR LEDs / IR Distance	1 Matrix / 100'
Video Compression	Main stream: H.265+ / H.265 / H.264+ / H.264, Sub: H.265+ / H.265 / H.264+ / H.264 / MJPEG
Main-Stream	60Hz: 4MP/3MP/1080P (1 ~ 30fps), 50Hz: 4MP/3MP/1080P (1 ~ 25fps)
Sub-Stream	60Hz: 720P(1 ~ 30fps)/D1/CIF (1 ~ 30fps), 50Hz: 720P/D1/CIF (1 ~ 25fps)
Bit Rate	64Kbps ~ 8Mbps
Bit Rate Type	VBR / CBR
BLC Control	Backlight & Highlight Compensation
Wide Dynamic Range (WDR)	True WDR (120dB)
Digital Noise Reduction (DNR)	XD-DNR (2D-DNR & 3D-DNR)
Image Setting	ROI, Saturation, Brightness, Hue, Contrast, Wide Dynamic, Sharpness, Noise Reduction, etc. Adjustable Through Client Software or Web Browser
Analytics	Region Intrusion Detection, Object Removal, Scene Change Detection, Line Crossing, Video Blur, Video Cast Detection
Smart Alarm	Motion Alarm, SD Card Error, SD Card Full
Region of Interest (ROI)	Each ROI to be Configured Separately
Network	RJ45
Audio	1 Ch. Audio In + Built-in Mic*
Storage	MicroSD Card Slot (256GB)
Remote Viewing	CMS / Web Browser / Mobile (iOS/Android)
Reset	YES
Supported Browsers	Internet Explorer (IE) - Plug-in Required, Edge in IE Mode
Connection Protocol	ONVIF
Ingress Protection / Impact Resistance	IP67 Weather Rating + IK10
Power Input	12VDC / PoE
Power Consumpt. (12VDC)	150mA (LEDs Off) / 400mA (LEDs On)
Power Consumpt. (PoE)	< 5W
Working Environment	-22° ~ 140°F (-30° ~ 60°C) / Humidity: Less than 95 % non-condensing
Weight Net (Shipping)	22.58oz / 1.41lb / 640g (28.22oz / 1.65lb / 800g)
Dimensions (H × Dia)	3.46 × 4.69" [87.8 × 119mm]

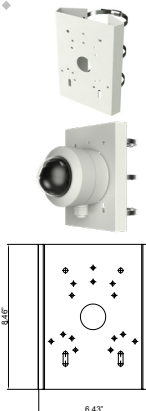
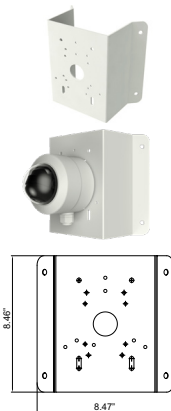
*Please research local, state and federal laws regarding the implementation of audio surveillance.

**OPTIONAL ACCESSORIES
 AND RELATED PRODUCTS
 FOR VTD-TND4FLN-2**
VT-TJB03A
 Optional Junction Box

VT-TFMT-S
 Optional Semi-Flush

VT-TWMT3
 Optional Wall Mount

VT-TPDM-1
 Optional Pendant Mount
 - reqs. VT-TJB03A

VT-TPLMT
 Transcendent Universal Pole
 Mount - reqs.
 VT-TJB03A

VT-TCNMT
 Transcendent Universal
 Corner Mount - reqs.
 VT-TJB03A




**OPTIONAL ACCESSORIES AND
RELATED PRODUCTS FOR
NDAA COMPLIANT
TRANSCENDENT IP CAMERAS**

Transcendent NVRs

**A Standalone Solution with
Analytic Support and
NDAA Compliance!**



**4K
8MP**



- **8MP (4K) HDMI Output**
- **H.265S / H.265+ / H.265 / H.264 Video Compression**
- **Analytic Support Including Basic Face Detection, License Plate Recognition, and More!**
- **Available in 4, 8, and 16 Channels**
- **Up to 24TB Depending on Model (12TB per HDD)**
- **PoE Support on ALL Models**

VT-TNR414PN
VT-TNR818PN



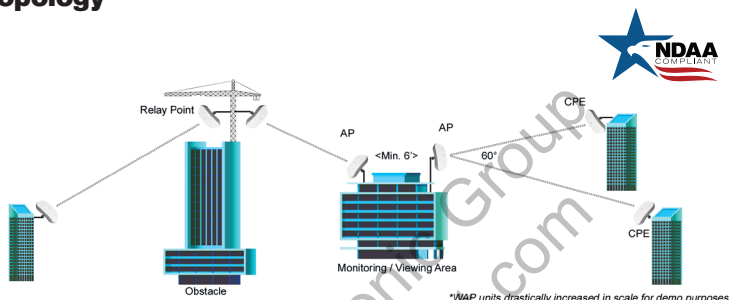
VT-TNR1626PN



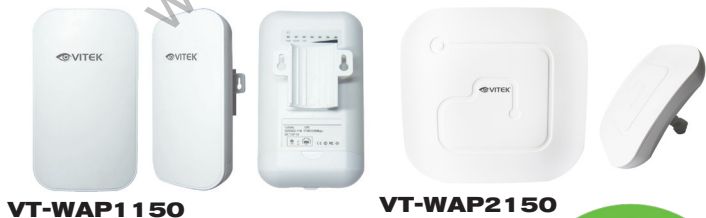
**An Eye On
Innovation**

Also Consider Vitek NDAA Compliant Wireless Access Points to Reduce Costly Cable Installation!

VT-WAP1150 and VT-WAP2150 High Speed 5.8GHz DIP AP / CPE Wireless Bridge w/ 8MB Storage, 64MB RAM, 150Mbps transmission, and Point-to-Multi-Point (P2MP) Topology



With high speed transmission of 150Mbps and a wireless range of **3000ft.** (VT-WAP1150) and **1.25 miles** (VT-WAP2150) these products eliminate the need for expensive and troublesome long-distance cables in areas where CCTV monitoring and rigorous surveillance take place. These small, lightweight and durable units are easy to install and easy to use with an innovative and straightforward 10-button plug-and-play dip switch that facilitates the creation of a robust wireless network without a computer. Set-up can be simply configured for point-to-point or point-to-multipoint topology depending on the application, with up to 128 IP group configurations!



LIMITED PRODUCT WARRANTY

VITEK products carry a three (3) year limited warranty. VITEK warrants to the purchaser that products manufactured by VITEK are free of any rightful claim of infringement or the like, and when used in the manner intended, will be free of defects in materials and workmanship for a period of three (3) years, or as otherwise stated above, from the date of purchase by the end user. This warranty is nontransferable and extends only to the original buyer or end user customer of a VITEK Authorized Reseller.

The product must have been used only for its intended purpose, and not been subjected to damage by misuse, willful or accidental damage, caused by excessive voltage or lightning.

The product must not have been tampered with in any way or the guarantee will be considered null and void.

This guarantee does not affect your statutory rights.

Contact your local VITEK Reseller should servicing become necessary.

VITEK makes no warranty or guarantee whatsoever with respect to products sold or purchased through unauthorized sales channels. Warranty support is available only if product is purchased through a VITEK Authorized Reseller.

Version 1.0
Mar. 2022