

VTD-TND8RMEA
Transcendent Series
8 MegaPixel [4K] Motorized IP WDR
Vandal Dome Camera

QUICK START GUIDE



Also Available in Charcoal,
VTD-TND8RMEA-B



FEATURES:

- 1/2.8" 8.0 Megapixel [4K] CMOS Image Sensor
- NDA Compliant
- 8MP (3840 × 2160) [1~20fps], 6MP (3072 × 2048), 5MP (2592 × 1944), 720P (1280 × 720), D1, CIF, 480 × 240 [1~30fps]
- 2.8~12mm Motorized Varifocal Lens
- Matrix IR (up to 165' IR Range)
- True Wide Dynamic Range (120dB)
- True Mechanical Day/Night function by ICR
- XD-DNR (3D & 2D-DNR) Noise Reduction
- Region Intrusion Detection, Scene Change Detection, Line Crossing
- H.265+ / H.265 / H.264+ / H.264 / MJPEG
- 1 Ch. Audio In + 1 Ch. Audio Out + Built-in Mic*
- 1 Ch. Alarm Input + 1 Ch. Alarm Output + CVBS Out
- Remote Viewing via CMS, Edge in IE Mode, iOS & Android Apps
- ONVIF Compliant
- MicroSD Card Slot for Local Recording (256GB)
- IP67 Weather Resistance + IK10
- Optional Junction Box (VT-TJB010), Wall Mount (VT-TWMT-A2 [reqs. VT-TJB010]), Pendant Mount (VT-TPDMT-A2 [reqs. VT-TJB010]), and In-Ceiling Semi Flush Mount (VT-TFMT-L2) Available
See Additional Mounting Options on Pg. 9
- 12VDC & PoE (Power over Ethernet) Operation
- 3-Year Warranty

*Please research local, state and federal laws regarding the implementation of audio surveillance.



Components and Accessories



Camera



Quick start guide



4 tapping screws PA 4×2



Rubber plug



Allen Key



Drill template

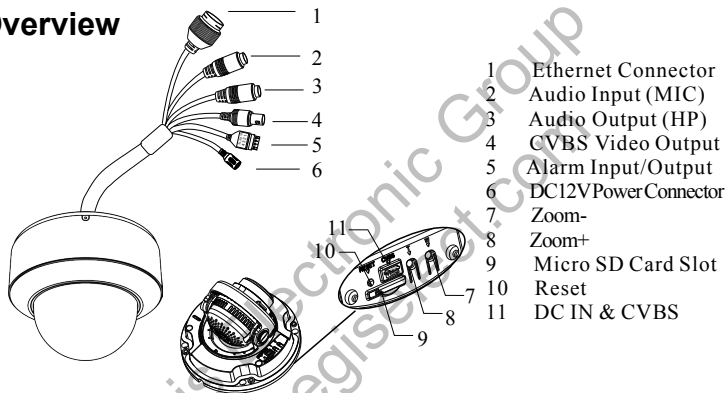


Plastic plug ×4

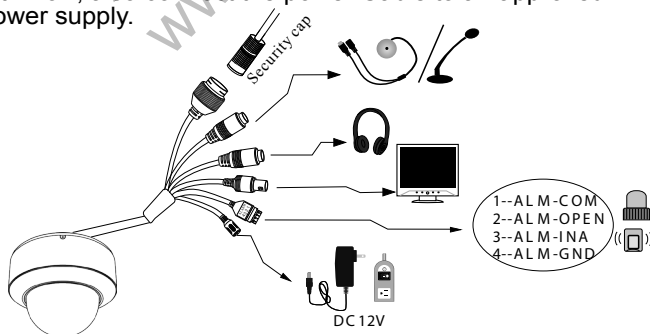


CVBS&DC
IN cables

Overview



Connect the Weather Resistant Cap to an Ethernet patch cable. Connect the cameras ethernet adaptor. If not powering the camera with PoE, also connect the power Cable to an approved 12VDC Power supply.

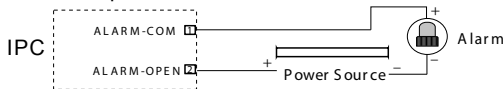


Connecting Alarm Input/Output

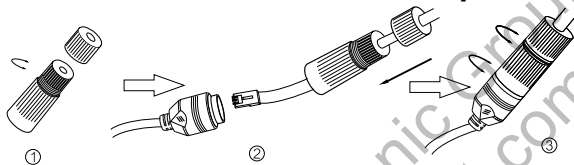
Alarm Input



Alarm Output



Weather Resistant Network Coupler

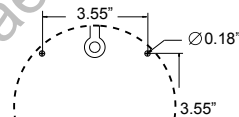


1. Loosen the nut from the Weather Resistant Network Coupler,
2. Run ethernet cable through coupler, then attach a RJ-45 connector.
3. Tighten the nut and coupler for a weather resistant seal.

Installation

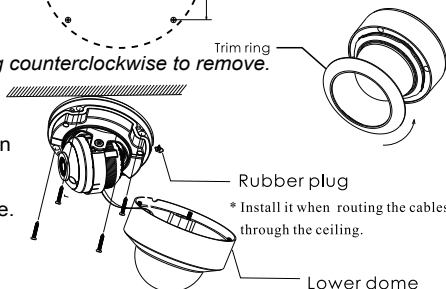
Before beginning installation, make sure that the wall or ceiling is strong enough to withstand 3 times the weight of the camera. The mounting steps are as follows:

1. Attach the drill template to the place where you want to install the camera, then drill the screw holes and 1 cable hole according to the drill template.

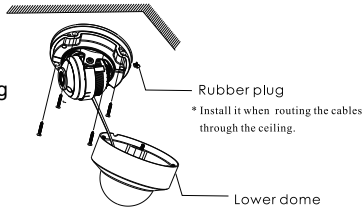


1A. Rotate the trim ring counterclockwise to remove.

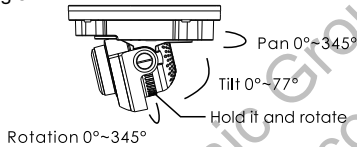
2. Loosen the screws to open the lower dome and then loosen the lock screw to remove the mounting base.



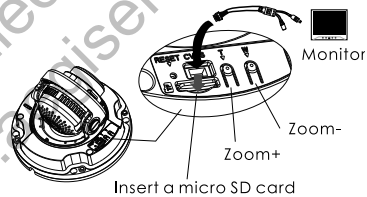
3. Route the cables and connect the power & video cables, use the rubber plug to fill the gap of the mounting base. Then secure the camera to the ceiling or wall with the screws provided.



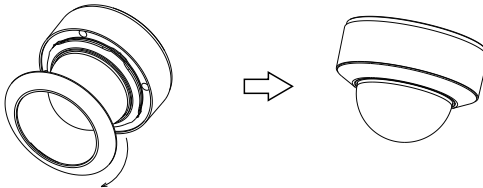
4. Before adjusting the three-axis camera mount, preview the camera on a monitor, then adjust as necessary to achieve the optimum viewing angle.



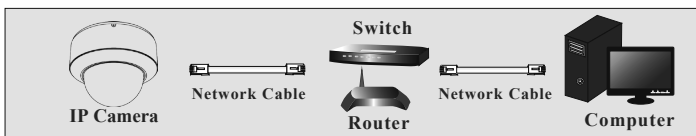
5. Insert a MicroSD card if desired. Adjust the Zoom or Focus to obtain an optimum image by pressing the T or W buttons to adjust.



6. Install the dome bubble on the camera with the included screws. Put the trim ring back on the lower dome and turn it clockwise until it locks. Finally, carefully remove the protective film from the bubble to complete.



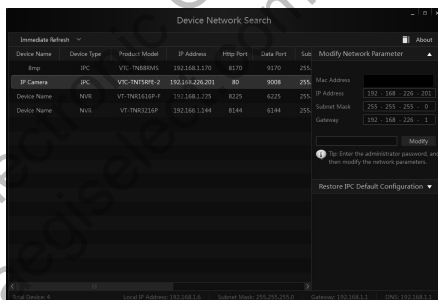
LAN Configuration



The camera can be accessed on the local network either using the IP-Tool or directly in a web browser.

Accessing the Camera Using the IP-Tool

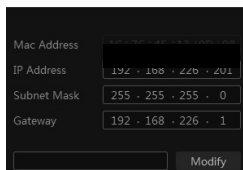
1. Make sure the camera and PC are connected to the LAN.
2. Locate the IP-Tool installer at www.vitekcctv.com/Downloads/Software/Transcendent-IPTool_v2.0.2.zip, then install on the PC. Open the installed application.



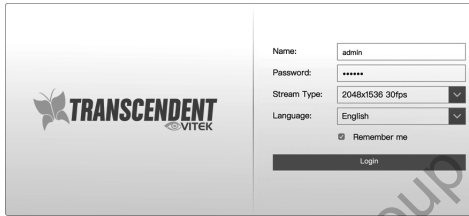
3. Modify the IP address. The default IP address is 192.168.226.201. Click the information of the camera listed in the above table to show the network information on the right side. Modify the IP address and gateway of the camera and make sure its network address is in the same local network segment as the computer's. Please modify the IP address of your device according to the practical situation.

For example, the IP address of your computer is 192.168.13.4. So the IP address of the camera shall be changed to 192.168.13.X. After modification, please input the password of the administrator and click "Modify" button to modify the setting.

** Default admin password: "123456".



4. Double-click the IP address and then the system will pop up the web browser to connect IP-CAM . IE browser will download the Active X control. After downloading, a login window will pop up as shown below:



Input the user name and password to log in.
Default user name: admin / Default password: 123456.

Directly Access Through a Web Browser

The default network settings are as shown below:

IP address: 192.168.226.201 HTTP: 80

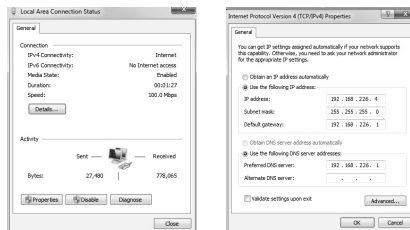
Subnet Mask: 255.255.255.0 Data Port: 9008

Gateway: 192.168.226.1

You may use the above default settings when you log in the camera for the first time.

1. Manually set the IP address of the PC. The network segment should be the same as the default settings of IP-CAM. Open the network and share center. Click “Local Area Connection” to pop up the following window.

Select “Properties” and then select Internet protocol according to the actual situation (for example: IPV4). Next, click “Properties” button to set the network of the PC.



- Open the IE Browser and input the default address of IP-CAM and confirm. The IE browser will download Active X control.
- After downloading Active X control, the login dialog box will pop up.
- Input the default username and password and then enter to view.

WAN Configuration

Access the camera by the router or virtual server for example.

- Make sure the camera is connected to the LAN; Then log into the camera via LAN and go to System Config→Network Config→Port menu to set up the port number.
- Enter System Config→Network Config→IP Address menu to modify the IP address.

Port	Server	DDNS	SNMP	802.1X	RTSP	UPn
HTTP Port	80					
HTTPS Port	443					
Data Port	9008					
RTSP Port	554					

Save

- Go to the router's management interface through IE browser to forward the IP address and port of IP-CAM in the "Virtual Server".

Port Range						
Application	Start	End	Protocol	IP Address	Enabl	
1	9008	9008	Both	192.168.6.6	<input checked="" type="checkbox"/>	
2	80	81	Both	192.168.6.6	<input checked="" type="checkbox"/>	
3	10000	10001	Both	192.168.6.166	<input type="checkbox"/>	
4	21000	21001	Both	192.168.6.156	<input type="checkbox"/>	
5	7777	7778	Both	192.168.6.206	<input type="checkbox"/>	
6	1029	1030	Both	192.168.6.207	<input type="checkbox"/>	

- Open the web browser and input its WAN IP and HTTP port to access the IP-CAM.

5. For additional setup, features and functions, please scan the QR code on the front page of this quick guide and download the complete manual.

VTD-TND8RMEA Detailed Specifications

Image Sensor	1/2.8" 8.0 Megapixel [4K] Progressive Scan CMOS
Image Size	8 MegaPixel (3840 × 2160)
Resolution	8MP(3840 × 2160) [1~20fps], 6MP(3072×2048), 5MP(2592×1944), 720P(1280×720), D1, CIF, 480×240 [1~30fps]
Min. Illumination	0.02 lux @ F1.6, AGC ON; 0 lux with IR, 0.01lux@F1.2, AGC ON; 0 lux with IR
Electronic Shutter	1 s ~ 1 / 100000 s
Lens	2.8~12mm Motorized Varifocal Lens
IR LEDs (Range)	3 Matrix Style IRs (Up to 165°)
Video Compression	H.265+ / H.265 / H.264+ / H.264 / MJPEG
Audio Compression	G.711A / G.711U
Main-Stream	8MP [4K] (1~20fps) / 6MP / 5MP / 720P / D1 / CIF / 480 x 240 (1~30fps)
Sub, Third Stream	60Hz: 720P/D1/480 × 240(1~30fps), 60Hz: D1/CIF/480 × 240 (1~30fps)
Bit Rate / Type	64 Kbps ~ 12 Mbps / VBR + CBR
Wide Dynamic Range	120dB Super WDR
Digital Noise Reduction	3D-DNR
Other Features	Back Light Compensation, Highlight Compensation, DeFog
Image Setting	ROI, Saturation, Brightness, Chroma, Contrast, Sharpen, NR, Adjust w/ client software / browser
Analytics	Region Intrusion, Scene Change, Line Crossing, Video Blur, Video Color Cast Detection
Smart Alarm	Motion Detection, SD Card Error, SD Card Full
General Functions	Watermark, IP Filter, Video Mask, Illegal Login Lock
Region of Interest (ROI)	Each ROI to be configured separately
Hardware Reset	Yes
Analog Video Output	Yes - 1 Ch. CVBS
Audio	1 Ch. Audio In + 1 Ch. Audio Out + Built-in Mic*
Alarm	1 Ch. Alarm In + 1 Ch. Alarm Out
Local Storage	Built-in Micro SD card slot up to 256GB
Remote Viewing	CMS / Web Browser / Mobile (iOS/Android)
Supported Browsers	Internet Explorer, Edge in IE Mode, Chrome and Firefox with IE Tab
Connection Protocol	ONVIF
Weather Resistance / Impact Rating	IP67 / IK10
Power Input	12VDC / PoE
Power Consump 12VDC, PoE	350mA (LEDs Off) / 875mA (LEDs On), < 10.5W
Working Environment	-22° ~140° / < 95% Humidity
Weight Net (Shipping), Dimensions (Dia×H)	33.51oz / 2.01lb / 950g (52.91oz / 3.31lb / 1500g), 5.55 × 3.94" (141 × 100mm)

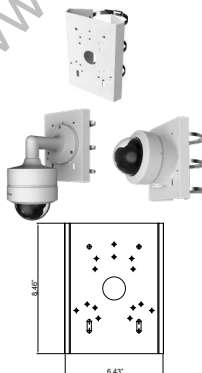
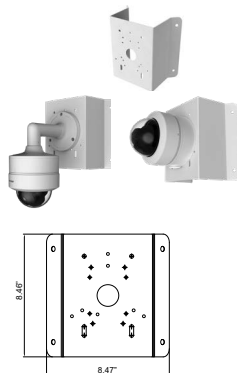
*Please research local, state and federal laws regarding the implementation of audio surveillance.

**OPTIONAL ACCESSORIES
 AND RELATED PRODUCTS
 FOR VTD-TND8RMEA**
VT-TJB010
 Optional Junction
 Box

VT-TPDMT-A2
 Pendant Mount
 - reqs. VT-TJB010

VT-TWMT-A2
 Wall Mount -
 reqs. VT-TJB010

VT-TFMT-L2
 Optional Semi
 Flush Mount

VT-TPLMT
 Transcendent
 Universal Pole Mount -
 reqs. VT-TJB010 /
 VT-TJB010 +
 VT-TWMT-A2

VT-TCNMT
 Transcendent Universal
 Corner Mount -
 reqs. VT-TJB010 /
 VT-TJB010 +
 VT-TWMT-A2




**OPTIONAL ACCESSORIES AND
RELATED PRODUCTS FOR
NDAA COMPLIANT
TRANSCENDENT IP CAMERAS**

NEWLY UPDATED

Transcendent **NVRs**

**A Standalone Solution with
Analytic Support and
NDAA Compliance!**



- **8MP (4K) HDMI Output**
- **H.265S / H.265+ / H.265 / H.264 Video Compression**
- **Analytic Support Including Basic Face Detection, License Plate Recognition, and More!**
- **Available in 4, 8, and 16 Channels**
- **Up to 24TB Depending on Model (12TB per HDD)**
- **PoE Support on ALL Models**

VT-TNR414PN
VT-TNR818PN

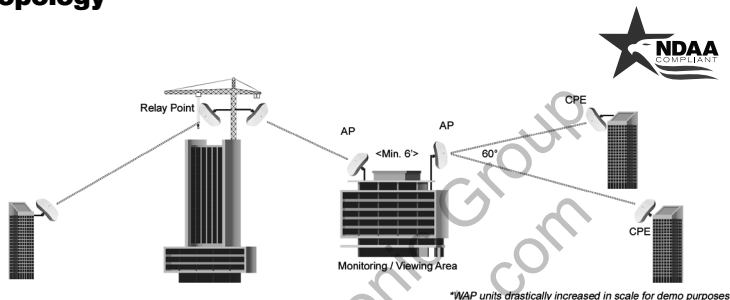
VT-TNR1626PN



**An Eye On
Innovation**

Also Consider Vitek NDAA Compliant Wireless Access Points to Reduce Costly Cable Installation!

VT-WAP1150 and VT-WAP2150 High Speed 5.8GHz DIP AP / CPE Wireless Bridge w/ 8MB Storage, 64MB RAM, 150Mbps transmission, and Point-to-Multi-Point (P2MP) Topology



With high speed transmission of 150Mbps and a wireless range of **3000ft.** (VT-WAP1150) and **1.25 miles** (VT-WAP2150) these products eliminate the need for expensive and troublesome long-distance cables in areas where CCTV monitoring and rigorous surveillance take place. These small, lightweight and durable units are easy to install and easy to use with an innovative and straightforward 10-button plug-and-play dip switch that facilitates the creation of a robust wireless network without a computer. Set-up can be simply configured for point-to-point or point-to-multipoint topology depending on the application, with up to 128 IP group configurations!



VT-WAP1150

VT-WAP2150



LIMITED PRODUCT WARRANTY

VITEK products carry a three (3) year limited warranty. VITEK warrants to the purchaser that products manufactured by VITEK are free of any rightful claim of infringement or the like, and when used in the manner intended, will be free of defects in materials and workmanship for a period of three (3) years, or as otherwise stated above, from the date of purchase by the end user. This warranty is nontransferable and extends only to the original buyer or end user customer of a VITEK Authorized Reseller.

The product must have been used only for its intended purpose, and not been subjected to damage by misuse, willful or accidental damage, caused by excessive voltage or lightning.

The product must not have been tampered with in any way or the guarantee will be considered null and void.

This guarantee does not affect your statutory rights.

Contact your local VITEK Reseller should servicing become necessary.

VITEK makes no warranty or guarantee whatsoever with respect to products sold or purchased through unauthorized sales channels. Warranty support is available only if product is purchased through a VITEK Authorized Reseller.

Version 1.0
Oct. 2021