



VTC-TNB16X4MS

Transcendent Series
16 MegaPixel 180°
Multi-Sensor "Peri-Cam" Camera

QUICK START GUIDE



*Shown with Included J-Box VT-TJB010

VITEK
PERI
CAM
16MP

FEATURES:

- Four 1/1.8" 4.0 MegaPixel Progressive Scan CMOS Image Sensors
- Resolution of up to 5520 x 2400
- 4 x 4.5mm Fixed Lens
- 1s~1/10,000s; Auto/Manual Electronic Shutter
- 8 IR LEDs, up to 75' IR Range (with 180° Array)
- Digital Wide Dynamic Range (D-WDR)
- Analytics including: Line Crossing, Region Entrance / Exit
- True Mechanical Day/Night function by ICR
- XD-DNR (2D & 3D-DNR) Noise Reduction
- Field of View Capacity: Pan (180°), Tilt (80°)
- Smart H.265/H.264/MJPEG Triple Streaming
- Single IP Address Input Required
- Remote View via CMS, IE, iOS & Android Apps
- ONVIF Compliant
- MicroSD Memory Card Slot for Local Recording (up to 256GB)
- IP67 Weather Resistance
- Two-way Audio*, 1 Ch. Alarm In + Out, CVBS
- 12VDC & PoE+ (Power over Ethernet) Operation
- VT-TJB010 J-Box Included, and Universal Corner and Pole Mount Adapters Available
[See Page 9]
- 3-Year Warranty

*Please research local, state and federal laws regarding the implementation of audio surveillance.



PLEASE NOTE:

Complete User Guide, Software, Tools, and Updates are available online. Scan the QR Code or visit:
<http://www.vitekctv.com/Downloads>

Components and Accessories



Camera



Quick start guide



4 tapping screws



Drill template



Screwdriver

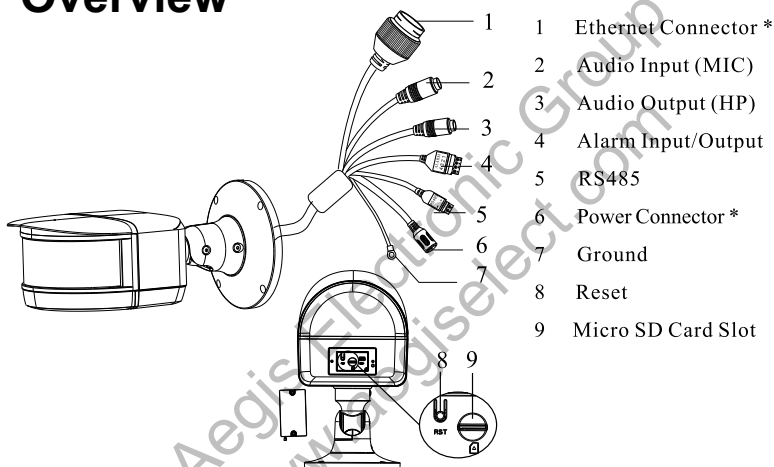


Rubber plug



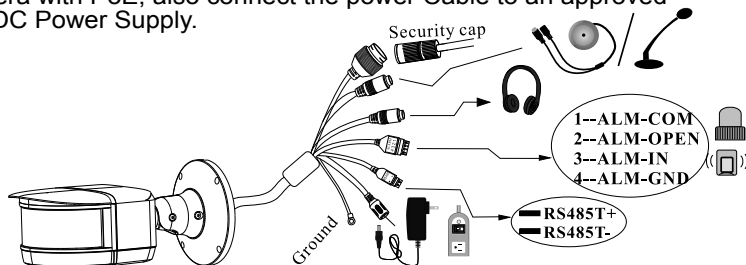
Plastic plug ×4

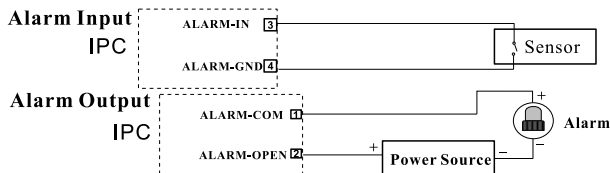
Overview



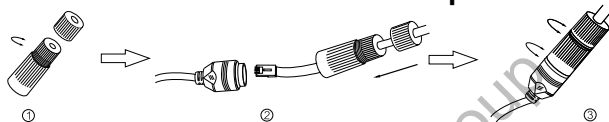
Cable Connections

First connect the Weather Resistant Cap to an Ethernet patch cable, then connect the camera's ethernet adaptor. If not powering the camera with PoE, also connect the power Cable to an approved 12VDC Power Supply.





Weather Resistant Network Coupler



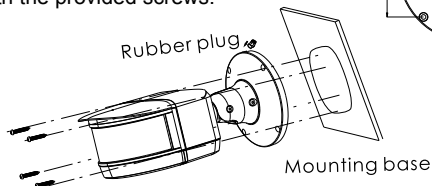
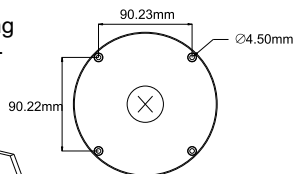
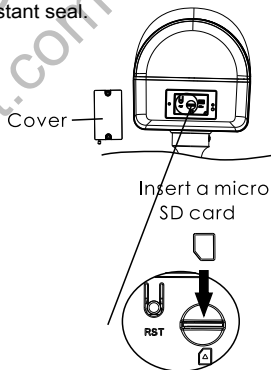
1. Loosen the nut from the Weather Resistant Network Coupler,
2. Run ethernet cable through coupler, then attach a RJ-45 connector.
3. Tighten the nut and coupler for a weather resistant seal.

Installation

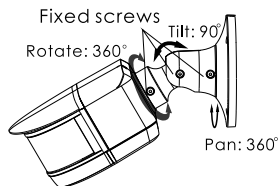
First Install a MicroSD Card as Demonstrated in Diagram at Right

**Before beginning installation, make sure that the wall or ceiling is strong enough to withstand 3 times the weight of the camera. The mounting steps are as follows:

1. Attach the drill template to the place where you want to install the camera, then drill 3 screw holes and 1 cable hole (if you want to route the cables through the mounting base) according to the drill template (see below right).
2. Route and connect relevant cables then attach the mounting base to the wall with the provided screws.

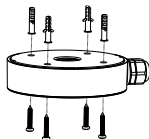


3. Before adjustment, preview the camera's image on a monitor and then loosen the fixed screws to adjust the camera's viewing angle. After that, tighten the screws.

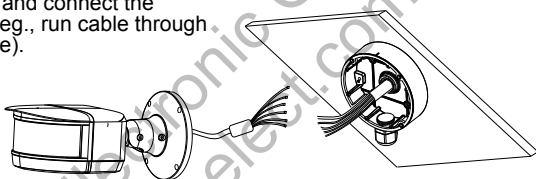


Mounting with a Junction Box

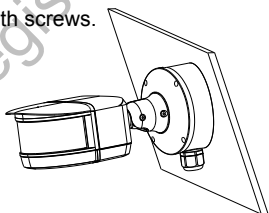
1. Mount the j-box to the wall with screws.



2. Route the cables and connect the relevant cables (for eg., run cable through the mounting surface).



2. Attach the camera to the j-box with screws.

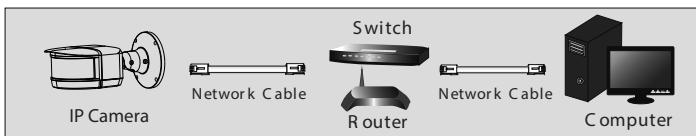


REGULAR MAINTENANCE TIPS

The lens cover is optional. Don't touch or wipe the surface directly during installation or use. Follow these cleaning tips:

1. If there is dust on the lens cover, use a dry soft brush to gently remove it
2. If there is water or grease on the lens cover, gently wipe off with a soft cloth. Then use an oil-free cotton cloth with a small amount of neutral detergent to wipe it several times until it is clean. Finally, use another cloth to dry it.
3. If there are fingerprints on the lens cover, use an oil-free cloth soaked with a small amount of neutral detergent to wipe it several times and then dry it with a soft cloth.

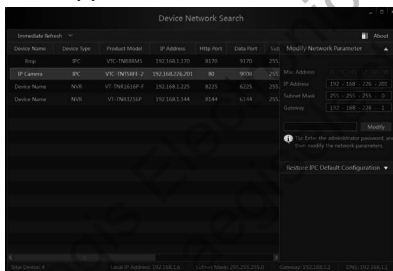
LAN Configuration



The camera can be accessed on the local network either using the IP-Tool or directly in a web browser.

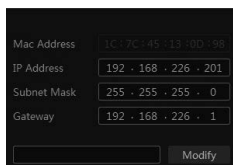
Accessing the Camera Using the IP-Tool

1. Make sure the camera and PC are connected to the LAN.
2. Locate the IP-Tool installer at www.vitekctv.com/Downloads/Software/Transcendent-IPTool_v2.0.2.zip, then install on the PC. Open the installed application.



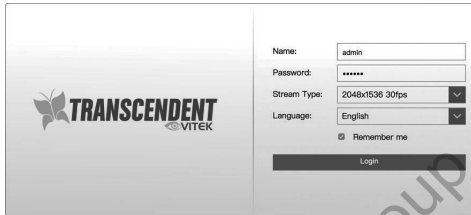
3. Modify the IP address. The default IP address is 192.168.226.201. Click the information of the camera listed in the above table to show the network information on the right side. Modify the IP address and gateway of the camera and make sure its network address is in the same local network segment as the computer's. Please modify the IP address of your device according to the practical situation.

For example, the IP address of your computer is 192.168.13.4. So the IP address of the camera shall be changed to 192.168.13.X. After modification, please input the password of the administrator and click "Modify" button to modify the setting.



** Default admin password: "123456".

4. Double-click the IP address and then the system will pop up the web browser to connect IP-CAM . IE browser will download the Active X control. After downloading, a login window will pop up as shown below:



Input the user name and password to log in.
Default user name: admin / Default password: 123456.

Directly Access Through a Web Browser

The default network settings are as shown below:

IP address: 192.168.226.201 HTTP: 80

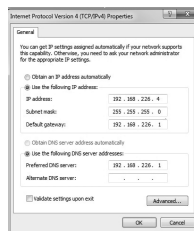
Subnet Mask: 255.255.255.0 Data Port: 9008

Gateway: 192.168.226.1

You may use the above default settings when you log in the camera for the first time.

1. Manually set the IP address of the PC. The network segment should be the same as the default settings of IP-CAM. Open the network and share center. Click “Local Area Connection” to pop up the following window.

Select “Properties” and then select Internet protocol according to the actual situation (for example: IPV4). Next, click “Properties” button to set the network of the PC.



- Open the IE Browser and input the default address of IP-CAM and confirm. The IE browser will download Active X control.
- After downloading Active X control, the login dialog box will pop up.
- Input the default username and password and then enter to view.

WAN Configuration

Access the camera by the router or virtual server for example.

- Make sure the camera is connected to the LAN; Then log into the camera via LAN and go to System Config→Network Config→Port menu to set up the port number.
- Enter System Config→Network Config→IP Address menu to modify the IP address.

Port	Server	DDNS	SNMP	802.1X	RTSP	UPn
HTTP Port	80					
HTTPS Port	443					
Data Port	9008					
RTSP Port	554					

Save

- Go to the router's management interface through IE browser to forward the IP address and port of IP-CAM in the "Virtual Server".

Port Range						
Application	Start	End	Protocol	IP Address	Enabl	
1	9008	9008	Both	192.168.6.6	<input checked="" type="checkbox"/>	
2	80	81	Both	192.168.6.6	<input checked="" type="checkbox"/>	
3	10000	10001	Both	192.168.6.166	<input type="checkbox"/>	
4	21000	21001	Both	192.168.6.156	<input type="checkbox"/>	
5	7777	7778	Both	192.168.6.206	<input type="checkbox"/>	

- Open the web browser and input its WAN IP and HTTP port to access the IP-CAM.
- For additional setup, features and functions, please scan the QR code on the front page of this quick guide and download the complete manual.**

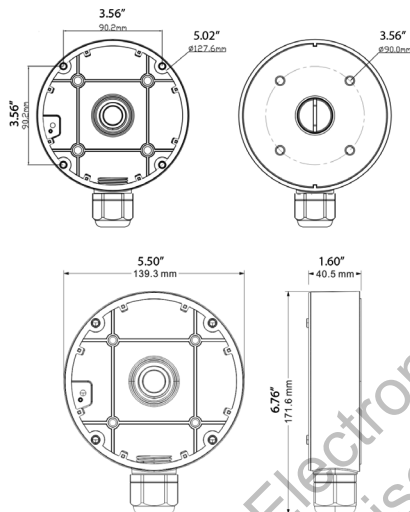
VT-TNB16X4MS Specifications

Image Sensor	4 × 1/1.8" 4.0 Megapixel Progressive Scan CMOS
Image Size	16 MegaPixel - 5520x2400
Electronic Shutter	1s - 1 / 10,000s (Auto / Manual)
Min. Illumination	Color: 0.008Lux @ (F2.0 AGC ON) B/W: 0.001Lux @ (F2.0 AGC ON), 0 Lux with IR
Lens	4.5mm Fixed Iris Lens × 4
Day/Night	True Day / Night by ICR
IR LEDs / IR Type	8 / Smart Irs
IR Distance	80' w/ 180 Degree Array
Video Compression	H.265 / H.264 / MJPEG
Audio Compression	G.711A / G.711U
Resolution	5520 × 2400, 3840 × 1680, 2784 × 1200 (30/25fps)
DNR	XD-DNR (2D-DNR & 3D-DNR)
Quality	VBR (Five Levels of Adjustment) / CBR (Adjustable)
Image Setting	Flip, Mirror, Saturation, Brightness, Contrast, Sharpness, AGC, and AWB adjusted by client software/browser
Analytics	Line Crossing, Region Entrance / Exit
Smart Alarm	SD Card Record, Fragment Record, Notify Control Center, Uploading SD Card, Sending e-mail
Alarm In / Alarm Out	/ / 1
ROI	Each ROI to be Configured Separately
Network	RJ45 10M / 100M Ethernet Port, PoE+ (802.3af)
Security Measures	User Authentication, Host Authentication (MAC address), HTTPS encryption, IEEE802.1x Port-based Network Access Control; IP Address Filtering
Network Protocols	HTTP, HTTPS, IP4/IP6, 802.1x, QoS, FTP, SMTP, UPnP, SNMP, DNS, DDNS, NTP, RTSP, RTP, TCP/IP, UDP, IGMP, ICMP, PPPoE, DHCP
Audio	1 x IN & 1 x OUT (Two-Way Audio)
Storage Card Slot	Supports One MicroSD up to 256GB
Remote Viewing	CMS / Web Browser / Mobile (iOS / Android)
RS 485	1 CH; Pelco-D/P Protocol, Custom Protocols Available
Supported Browsers	Internet Explorer 8-11, Edge in IE Mode
Connection Protocol	ONVIF, API, SDK
Weather / Impact Resistance Rating	IP67 / IK10
Power	12VDC / PoE (802.3af)
Working Environment	-22° ~ 140 (30°C ~ 60°C) / <95% Humidity
Dimensions / Weight	11.35" × 6.29" × 5.24" (288.4mm × 159.7mm × 137.7mm) Length × Width / 74 oz. (4.62 lbs.) (2.1kg)

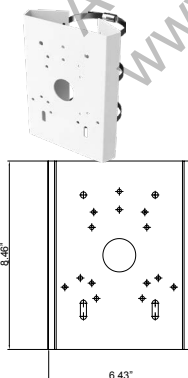
**Please research local, state and federal laws regarding the implementation of audio surveillance.*



OPTIONAL ACCESSORIES AND RELATED PRODUCTS FOR VTC-TNB16X4MS



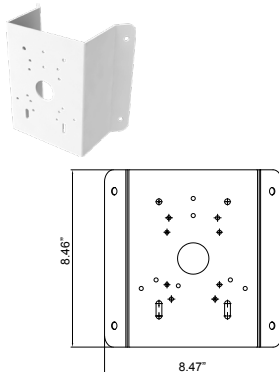
VT-TPLMT
Transcendent Universal Pole
Mount - reqs.
VT-TJB010



VT-JB010
Included J-Box for
Cable Management



VT-TCNMT
Transcendent Universal
Corner Mount - reqs.
VT-TJB010





**OPTIONAL ACCESSORIES AND
RELATED PRODUCTS FOR
NDAA COMPLIANT
TRANSCENDENT IP CAMERAS**

Transcendent NVRs

***A Standalone Solution with
Analytic Support and
NDAA Compliance!***



**4K
8MP**



- **8MP (4K) HDMI Output**
- **H.265S / H.265+ / H.265 / H.264 Video Compression**
- **Analytic Support Including Basic Face Detection, License Plate Recognition, and More!**
- **Available in 4, 8, and 16 Channels**
- **Up to 24TB Depending on Model (12TB per HDD)**
- **PoE Support on ALL Models**

VT-TNR414PN
VT-TNR818PN



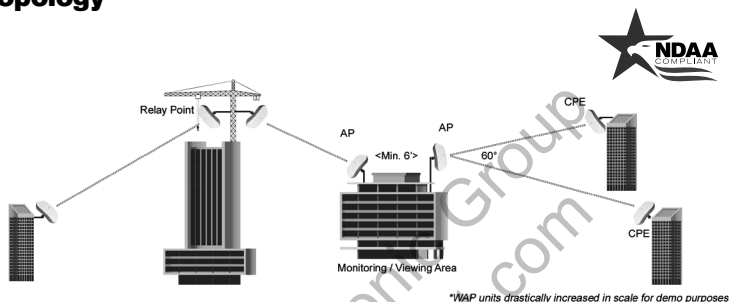
VT-TNR1626PN



**An Eye On
Innovation**

Also Consider Vitek NDAA Compliant Wireless Access Points to Reduce Costly Cable Installation!

VT-WAP1150 and VT-WAP2150 High Speed 5.8GHz DIP AP / CPE Wireless Bridge w/ 8MB Storage, 64MB RAM, 150Mbps transmission, and Point-to-Multi-Point (P2MP) Topology



With high speed transmission of 150Mbps and a wireless range of **3000ft.** (VT-WAP1150) and **1.25 miles** (VT-WAP2150) these products eliminate the need for expensive and troublesome long-distance cables in areas where CCTV monitoring and rigorous surveillance take place. These small, lightweight and durable units are easy to install and easy to use with an innovative and straightforward 10-button plug-and-play dip switch that facilitates the creation of a robust wireless network without a computer. Set-up can be simply configured for point-to-point or point-to-multipoint topology depending on the application, with up to 128 IP group configurations!



LIMITED PRODUCT WARRANTY

VITEK products carry a three (3) year limited warranty. VITEK warrants to the purchaser that products manufactured by VITEK are free of any rightful claim of infringement or the like, and when used in the manner intended, will be free of defects in materials and workmanship for a period of three (3) years, or as otherwise stated above, from the date of purchase by the end user. This warranty is nontransferable and extends only to the original buyer or end user customer of a VITEK Authorized Reseller.

The product must have been used only for its intended purpose, and not been subjected to damage by misuse, willful or accidental damage, caused by excessive voltage or lightning.

The product must not have been tampered with in any way or the guarantee will be considered null and void.

This guarantee does not affect your statutory rights.

Contact your local VITEK Reseller should servicing become necessary.

VITEK makes no warranty or guarantee whatsoever with respect to products sold or purchased through unauthorized sales channels. Warranty support is available only if product is purchased through a VITEK Authorized Reseller.



28492 CONSTELLATION ROAD VALENCIA, CA 91355
WWW.VITEKCCTV.COM

Version 1.0
Mar. 2022