

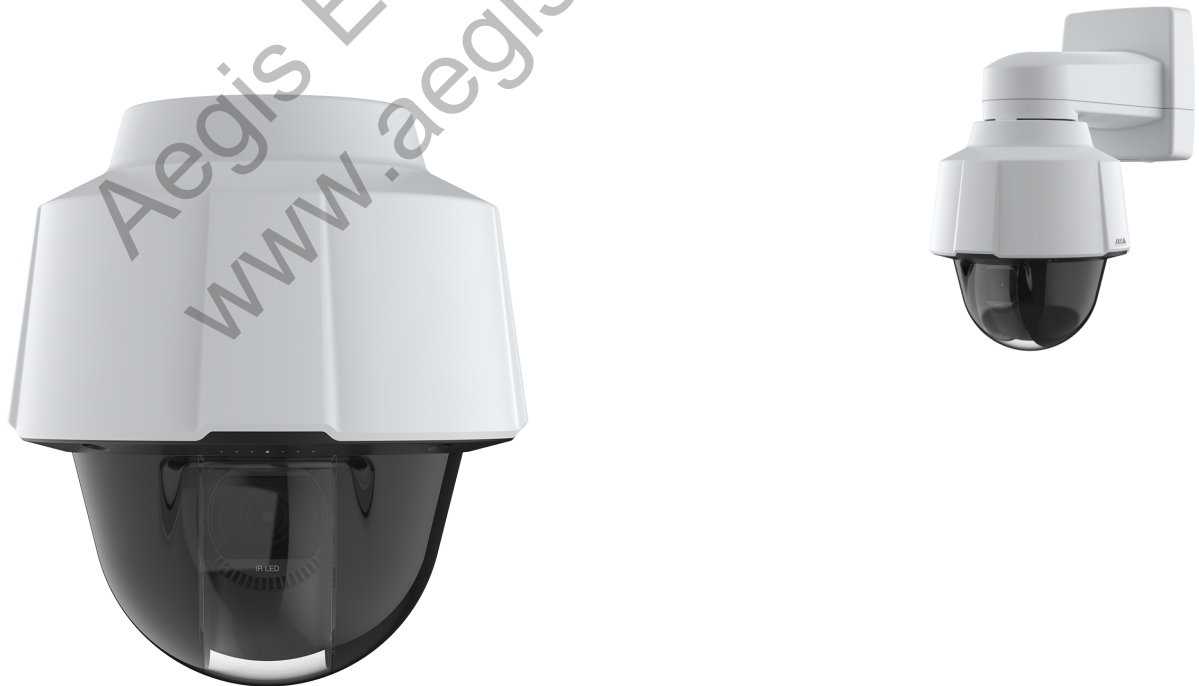


## **AXIS P5676-LE PTZ Camera**

### High-performance 4 MP PTZ with IR

This high-performance PTZ camera offers 4 MP image quality with 30x optical zoom and IR. Forensic WDR and Lightfinder 2.0 guarantee images with saturated colors and sharp details of moving objects even in challenging light or near darkness. It offers support for analytics and includes AXIS Object Analytics to detect and classify people and vehicles. This cost-effective camera includes built-in cybersecurity features to safeguard your system and prevent unauthorized access. Axis Zipstream with H.264/H.265 significantly lowers bandwidth and storage requirements. Furthermore, you can pop it into an AXIS Q6100-E using AXIS TP6902-E Adapter Bracket and enjoy 360° overview for total situational awareness.

- > **4 MP with 30x optical zoom**
- > **Forensic WDR, Lightfinder 2.0, IR Illumination**
- > **Support for advanced analytics**
- > **Built-in cybersecurity features**
- > **Zipstream with support for H.264/H.265**



# AXIS P5676-LE PTZ Camera

<b>Models</b>	AXIS P5676-LE 50 Hz AXIS P5676-LE 60 Hz
<b>Camera</b>	
<b>Image sensor</b>	1/2.9" progressive scan RGB CMOS
<b>Lens</b>	Varifocal, 4.5-135 mm, F1.6 - 4.6 Horizontal field of view: 57.1° - 2.1° Vertical field of view: 34.4° - 1.2° Minimum focus distance: 1.3 m (4.3 ft) P-Iris control
<b>Day and night</b>	Automatically removable infrared-cut filter
<b>Minimum illumination</b>	Color: 0.1 lux at 30 IRE F1.6 B/W: 0.01 lux at 30 IRE F1.6 0 lux with IR illumination on Color: 0.11 lux at 50 IRE F1.6 B/W: 0.03 lux at 50 IRE F1.6 0 lux with IR illumination on
<b>Shutter speed</b>	1/50000 s to 1/5 s with 50 Hz 1/62500 s to 1/5 s with 60 Hz
<b>Pan/Tilt/Zoom</b>	Pan: 360° endless, 0.1° - 350°/s Tilt: 0-90°, 0.1° - 350°/s Zoom: 30x optical, 12x digital, Total 360x zoom 256 preset positions, nadir flip, limited guard tour, control queue, on-screen directional indicator, set new pan 0°, focus recall, spot focus

<b>System on chip (SoC)</b>	
<b>Model</b>	ARTPEC-7
<b>Memory</b>	1024 MB RAM, 512 MB Flash
<b>Compute capabilities</b>	Machine learning processing unit (MLPU)

<b>Video</b>	
<b>Video compression</b>	H.264 (MPEG-4 Part 10/AVC) Baseline, Main and High Profiles H.265 (MPEG-H Part 2/HEVC) Main Profile Motion JPEG
<b>Resolution</b>	(16:9) 2688x1512 to 320x180
<b>Frame rate</b>	Up to 60/50 fps (60/50 Hz) in all resolutions
<b>Video streaming</b>	Multiple, individually configurable streams in H.264, H.265 and Motion JPEG Controllable frame rate and bandwidth Axis Zipstream technology in H.264 and H.265 VBR/ABR/MBR H.264/H.265 Low latency mode Video streaming indicator

<b>Image settings</b>	Compression, saturation, brightness, sharpness, contrast, local contrast, white balance, exposure control, exposure zones, Forensic WDR: Up to 120 dB depending on scene, defogging, day/night shift level, tone mapping, fine tuning of low-light behavior, rotation: 0°, 180°, text and image overlay, image freeze on PTZ, electronic image stabilization, barrel distortion correction, 20 individual polygon and mosaic privacy masks, orientation aid PTZ, target aperture Scene profiles: forensic, indoor, outdoor, traffic overview
-----------------------	---

<b>Audio</b>	
<b>Audio streaming</b>	Two-way audio via network speaker pairing
<b>Audio encoding</b>	24bit LPCM, AAC-LC 8/16/32/48 kHz, G.711 PCM 8 kHz, G.726 ADPCM 8 kHz, Opus 8/16/48 kHz Configurable bit rate

<b>Audio input/output</b>	External microphone input or line input, line output (Requires Axis 10-pin Push-pull System Connector or Axis Multicable C I/O Audio Power 1 m/5 m, not included), automatic gain control
---------------------------	---

<b>Network</b>	
<b>Security</b>	IP address filtering, HTTPS <sup>a</sup> encryption, IEEE 802.1x (EAP-TLS) <sup>a</sup> network access control, user access log, centralized certificate management
<b>Network protocols</b>	IPv4, IPv6 USGv6, ICMPv4/ICMPv6, HTTP, HTTPS <sup>a</sup> , HTTP/2, TLS <sup>a</sup> , QoS Layer 3 DiffServ, FTP, SFTP, CIFS/SMB, SMTP, mDNS (Bonjour), UPnP <sup>®</sup> , SNMP v1/v2c/v3 (MIB-II), DNS/DNSv6, DDNS, NTP, RTSP, RTCP, RTP, SRTP/RTSPS, TCP, UDP, IGMPv1/v2/v3, DHCPv4/v6, ARP, SSH, NTCIP, LLDP, CDP, MQTT v3.1.1, Secure syslog (RFC 3164/5424, UDP/TCP/TLS), Link-Local address (ZeroConf)

<b>System integration</b>	
<b>Application Programming Interface</b>	Open API for software integration, including VAPIX <sup>®</sup> , metadata and AXIS Camera Application Platform (ACAP); specifications at <a href="http://axis.com/developer-community">axis.com/developer-community</a> . ACAP includes Native SDK . One-click cloud connection ONVIF <sup>®</sup> Profile G, ONVIF <sup>®</sup> Profile M, ONVIF <sup>®</sup> Profile S, and ONVIF <sup>®</sup> Profile T, specifications at <a href="http://onvif.org">onvif.org</a>

<b>Event conditions</b>	Audio: audio clip playing, audio detection Device status: above operating temperature, above or below operating temperature, below operating temperature, fan failure, IP address removed, network lost, new IP address, PTZ power failure, storage failure, system ready, within operating temperature Edge storage: recording ongoing, storage disruption, storage health issues detected I/O: digital input, manual trigger, virtual input MQTT: subscribe PTZ: PTZ malfunctioning, PTZ movement, PTZ preset position reached, PTZ ready Scheduled and recurring: schedule Video: average bitrate degradation, day-night mode, live stream open, tampering
-------------------------	--

<b>Event actions</b>	Audio clips: play, stop Day-night mode Guard tour I/O: toggle I/O once, toggle I/O while the rule is active IR illumination: turn on, use lights while the rule is active MQTT: publish Notification: HTTP, HTTPS, TCP and email Overlay text Preset positions PTZ Autotracking: start temporary detection, toggle, toggle profile Recordings: SD card and network share SNMP trap messages: send, send while the rule is active Upload of images or video clips: FTP, SFTP, HTTP, HTTPS, network share and email WDR mode
----------------------	---

<b>Built-in installation aids</b>	Pixel counter, leveling guide
-----------------------------------	-------------------------------

<b>Analytics</b>	
<b>AXIS Object Analytics</b>	Object classes: humans, vehicles Scenarios: line crossing, object in area, crossline counting, time in area Up to 10 scenarios Metadata visualized with trajectories, color-coded bounding boxes and tables Polygon include/exclude areas Perspective configuration ONVIF Motion Alarm event

<b>Metadata</b>	<b>Object data:</b> Classes: humans, faces, vehicles (types: cars, buses, trucks, bikes), license plates <b>Confidence, position</b> <b>Event data:</b> Producer reference, scenarios, trigger conditions
-----------------	---

<b>Applications</b>	Included AXIS Object Analytics AXIS Video Motion Detection Audio detection, active gatekeeper Autotracker 2 Support for AXIS Camera Application Platform enabling installation of third-party applications, see <a href="http://axis.com/acap">axis.com/acap</a>
---------------------	---

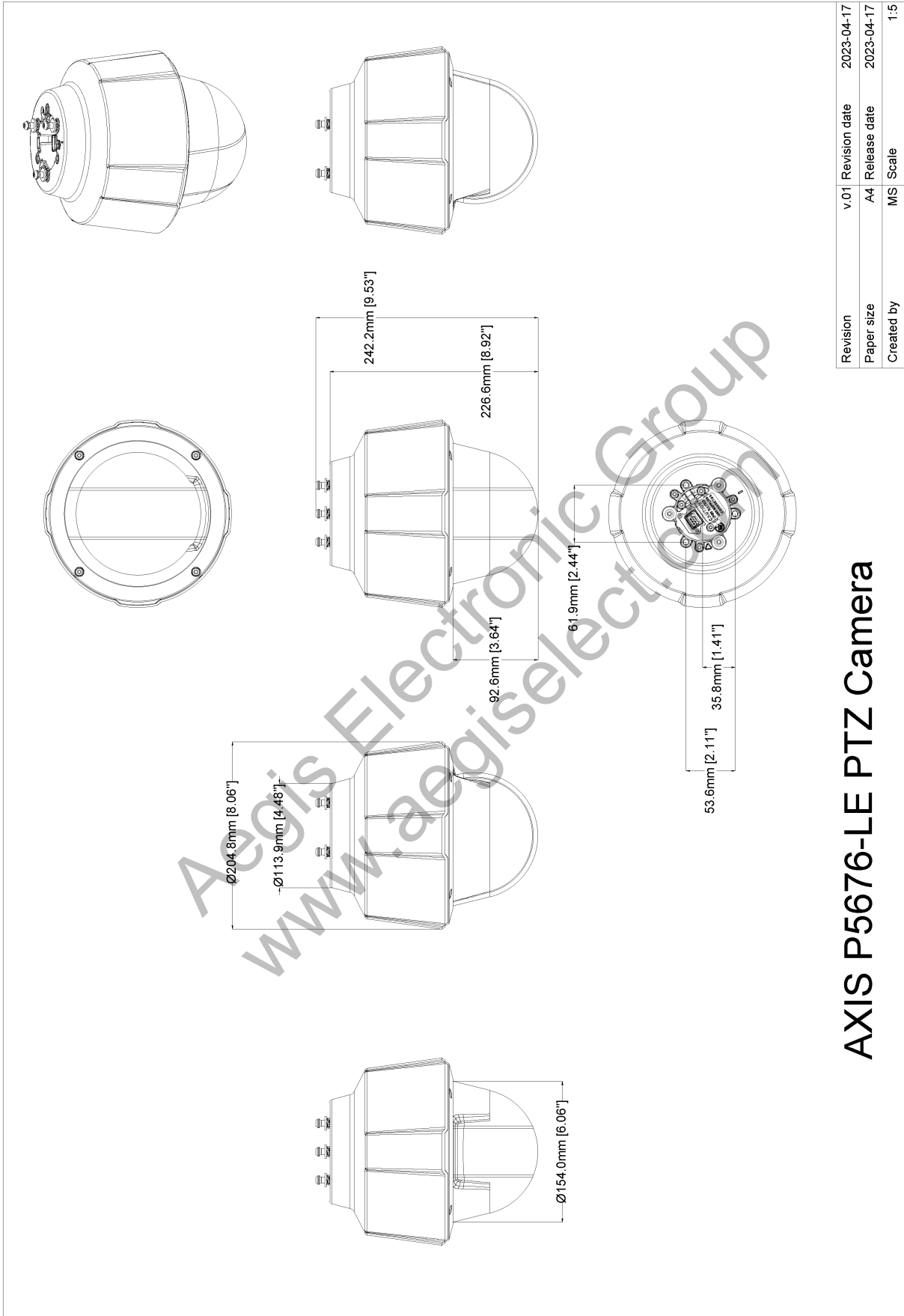
<b>Approvals</b>	
<b>EMC</b>	CISPR 35, CISPR 32 Class A, EN 55032 Class A, EN 55035, EN 50121-4, EN 61000-3-2, EN 61000-3-3, EN 61000-6-1, EN 61000-6-2 Canada: ICES-3(A)/NMB-3(A) Japan: VCCI Class A Korea: KS C 9835, KS C 9832 Class A USA: FCC Part 15 Subpart B Class A

<b>Safety</b>	IEC/EN/UL 62368-1 ed. 3, CAN/CSA C22.2 No. 62368-1 ed. 3, IEC 62471 risk group 2, IS 13252
---------------	--

<b>Environment</b>	IEC 60068-2-1, IEC 60068-2-2, IEC 60068-2-6, IEC 60068-2-14, IEC 60068-2-27, IEC 60068-2-78, IEC/EN 60529 IP66, IEC/EN 62262 IK10, NEMA 250 Type 4X, NEMA TS 2 (2.2.7-2.2.9), ISO 21207 (Method B)
--------------------	--

<b>Network</b>	NIST SP500-267		
<b>Cybersecurity</b>	ETSI EN 303 645		Support for SD card encryption (AES-XTS-Plain64 256bit) Recording to network-attached storage (NAS) For SD card and NAS recommendations see <a href="http://axis.com">axis.com</a>
<b>Cybersecurity</b>			
<b>Edge security</b>	Software: Signed firmware, brute force delay protection, digest authentication and OAuth 2.0 RFC6749 OpenID Authorization Code Flow for centralized ADFS account management, password protection, AES-XTS-Plain64 256bit SD card encryption Hardware: Axis Edge Vault cybersecurity platform Secure element (CC EAL 6+), Axis device ID, secure keystore, signed video, secure boot	<b>Operating conditions</b>	-30 °C to 50 °C (-22 °F to 122 °F) Maximum temperature according to NEMA TS 2 (2.2.7): 74 °C (165 °F) Start-up temperature: -30 °C Humidity 10–100% RH (condensing)
<b>Network security</b>	IEEE 802.1X (EAP-TLS, PEAP-MSCHAPv2) <sup>a</sup> ,	<b>Storage conditions</b>	-40 °C to 65 °C (-40 °F to 149 °F) Humidity 5–95% RH (non-condensing)
<b>Documentation</b>			
<b>Documentation</b>	<i>AXIS OS Hardening Guide</i> <i>Axis Vulnerability Management Policy</i> <i>Axis Security Development Model</i> AXIS OS Software Bill of Material (SBOM) To download documents, go to <a href="http://axis.com/support/cybersecurity/resources">axis.com/support/cybersecurity/resources</a> To read more about Axis cybersecurity support, go to <a href="http://axis.com/cybersecurity">axis.com/cybersecurity</a>	<b>Dimensions</b>	Height: 242 mm (9.53 in) ø 205 mm (8.1 in)
<b>General</b>			
<b>Casing</b>	IP66-, NEMA 4X- and IK10-rated Polycarbonate (PC) casing Color: white NCS S 1002-B, repaintable skin cover For repainting instructions of casing and impact on warranty, contact your Axis partner.	<b>Weight</b>	2.5 kg (5.5 lb)
<b>Power</b>	Camera consumption: typical 13 W, max 25.5 W IEEE 802.3at Type 2 Class 4 Camera consumption: typical 13 W, max 29 W IEEE 802.3bt Type 3 Class 6 <b>Multiconnector:</b> 20–28 V DC, typical 13 W, max 30 W 20–24 V AC, typical 20 VA, max 43 VA (High PoE midspan or power supply not included)	<b>Included accessories</b>	RJ45 Push-pull plug (IP66), installation guide, Windows® decoder 1-user license
<b>Connectors</b>	RJ45 10BASE-T/100BASE-TX PoE RJ45 push-pull connector (IP66) included With Axis 10-pin push-pull system connector or Axis multicable C I/O audio power 1 m/5 m (not included): I/O connector for DC or AC input, 4 configurable alarm Inputs/outputs: mic in/line in, line out	<b>Optional accessories</b>	AXIS TP6902-E Adapter Bracket, AXIS T91B mounts, AXIS T8154 60 W SFP Midspan, outdoor RJ45 cable, Axis 10-pin Push-Pull System Connector, Axis Multicable C I/O Audio Power 1 m/5 m For more accessories, see <a href="http://axis.com">axis.com</a>
<b>IR illumination</b>	OptimizedIR with power-efficient, long-life 850 nm IR LEDs With 30 W midspan: Range of reach 200 m (656 ft) or more depending on the scene. The range is temporarily reduced during PTZ movements.	<b>Video management software</b>	AXIS Companion, AXIS Camera Station, video management software from Axis Application Development Partners available at <a href="http://axis.com/vms">axis.com/vms</a>
<b>Storage</b>	Support for SD/SDHC/SDXC card	<b>Languages</b>	English, German, French, Spanish, Italian, Russian, Simplified Chinese, Japanese, Korean, Portuguese, Traditional Chinese, Dutch, Czech, Swedish, Finnish, Turkish, Thai, Vietnamese
		<b>Warranty</b>	5-year warranty, see <a href="http://axis.com/warranty">axis.com/warranty</a>
		<b>Sustainability</b>	
		<b>Substance control</b>	PVC free RoHS in accordance with EU RoHS Directive 2011/65/EU/ and EN 63000:2018 REACH in accordance with (EC) No 1907/2006. For SCIP UUID, see <a href="http://echa.europa.eu">echa.europa.eu</a>
		<b>Materials</b>	Renewable carbon-based plastic content: 22% (recycled) Screened for conflict minerals in accordance with OECD guidelines To read more about sustainability at Axis, go to <a href="http://axis.com/about-axis/sustainability">axis.com/about-axis/sustainability</a>
		<b>Environmental responsibility</b>	<a href="http://axis.com/environmental-responsibility">axis.com/environmental-responsibility</a> Axis Communications is a signatory of the UN Global Compact, read more at <a href="http://unglobalcompact.org">unglobalcompact.org</a>
		<sup>a</sup> This product includes software developed by the OpenSSL Project for use in the OpenSSL Toolkit. ( <a href="http://openssl.org">openssl.org</a> ), and cryptographic software written by Eric Young ( <a href="mailto:ey@cryptsoft.com">ey@cryptsoft.com</a> ).	

# Dimension drawing



## AXIS P5676-LE PTZ Camera