

V S -WA

Inner View Lens
SERIES

Diagnose your bottle's inner defects at a distance.

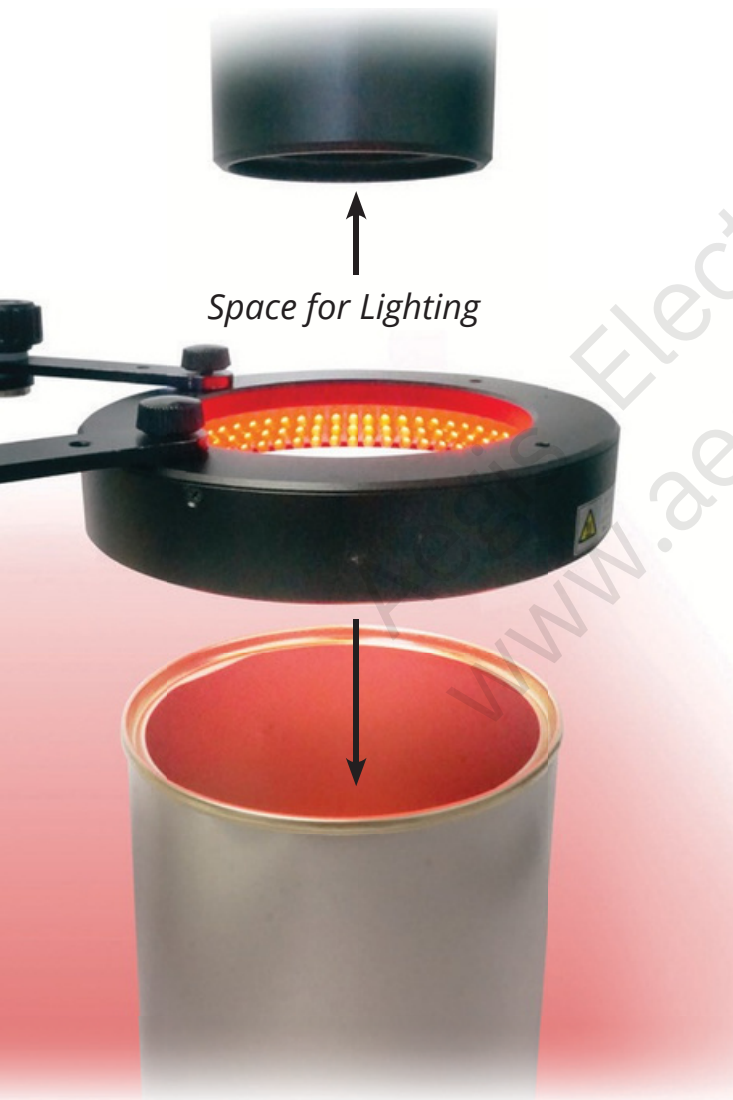


Long Working Distance - Multitudes of Lighting Options

Capture the inner surface of containers at a distance with the Inner View Lens

Application Potential

Single shot, quick can and bottle Inner surface inspection is critical for the FMCG, Automobile and Metal Component manufacturing Industries.



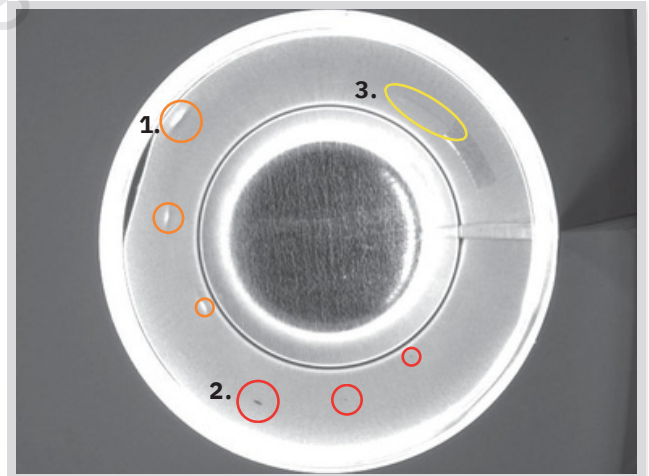
Features

The VS-WA06520/S Inner View Lens has a manual Iris/Focus, which is critical for maximizing its DOF.

VST's unique optical design allows there to be some space between the lens and the object permitting the placement of lighting devices. With standard fisheye lenses or lenses that have a short focal length, the WD is also short and which doesn't leave any room for lighting.

This lens solves that issue.

Detect Minuscule Defects



While inspecting a can with a height of 120mm and a 85mm diameter, various defects can be easily detected.

1. Dents
2. Black Dots - smallest one is less than 0.1mm
3. Hair - Diameter approx. 0.1mm