

This information is brought to you by:



**ELECTRONIC GROUP, INC**  
480-635-8400 p \* aegis-g2@aegiselect.com  
<http://www.aegis-elec.com>

**NEW**

# FHD BLOCK CAMERA

FCB-EV9520L

STARVIS  
NEXT GENERATION

1080P

STARVIS 2

60 FPS

130dB  
63.7 dig  
LVDS



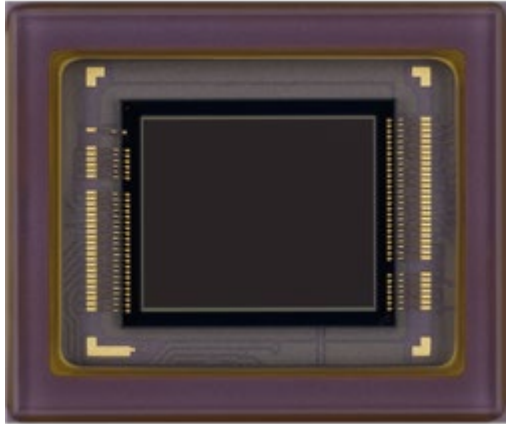
**30x**  
**1/2.8"**

# FCB-EV9520L Overview

- **New 1/3" FCB Block successor camera for FCB-EV7520/A**
- **Convenient migration & upgraded product line of 1/2.8"**
- **Designed for Surveillance, Medical, Off-line inspection equipment and added values applications/markets for general inspections and monitoring**

# FCB-EV9520L with Starvis2 Technology

- IMX-662 (new Sony sensor for security market)



1/2.8

" 16:9

2MP

STARVIS 2

Aegis Electronic Group  
www.aegiselect.com

**High sensitivity**  
**(day/night)**

# FCB-EV9520L Spec Comparison

		FCB-EV7520 FCB-EV7520A	Sony Sony New FCB-EV9520L
Imager		1/2.8"2M STARVIS	1/2.8" 2M
Output		1080 60p	STARVIS 1080 60p
Min	ICR	0.1lx	<b>Better than 7520/A</b>
Illumination*	OFF	0.006lx	<b>Better than 7520/A</b>
Min	ICR ON	130dB	130dB
Illumination*		30x	30x
WDR		63.7deg	63.7deg
Optical zoom		EIS	<b>Super Stabilizer (Super/Super+)</b>
H FOV			<b>Yes</b>
Boresight			<b>Yes</b>
EIS			<b>Yes</b>
correction	Spot	-	<b>Yes</b>
Focus/AE/AWB	ICR	-	<b>Yes</b>
ON COLOR		2W when motor operates 4.0W	<b>4.4W (Tentative) when motor operates 5.2W</b>
Power consumption			
I/F		LVDS, CVBS	<b>LVDS</b>
Size		50 x 60 x 89.7 mm	50 x 60 x 89.7 mm

# Image Sensor Improved

	IMX291/290 in FCB-EV7520/A	IMX662 in new FCB-EV9520L
Optical size	1/2.8"	1/2.8"
Number of recording pixels	1920 x 1080	1920 x 1080
Pixel size	2.9um	2.9um
Pixel Gen.	<b>STARVIS</b>	<b>STARVIS 2</b>
SNR1s	0.23lx	0.18lx
Quantum Efficiency @850nm	30%	51%

1.6x

Aegis Electronic Group  
www.aegiselect.com

Conventional STARVIS



STARVIS2 NIR Improved



条件：F=1.6, Exp.=33.3msec, Gain=0dB, 850 nm

## Local tone mapping HDR



## Clear HDR



Conventional: DOL HDR

IMX662: Clear HDR

Available by firmware upgrade

## Automatic 50/60Hz detection



Can I not use our video material?

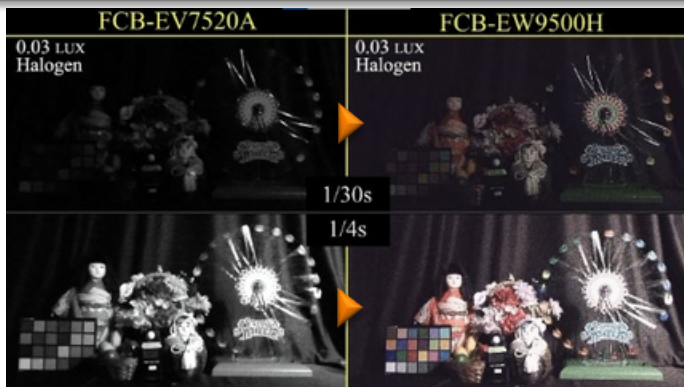
## Rolling shutter compensation



Can I not use our video material?

# Inherited Functions from FCB-9500 Series

## ICR ON COLOR

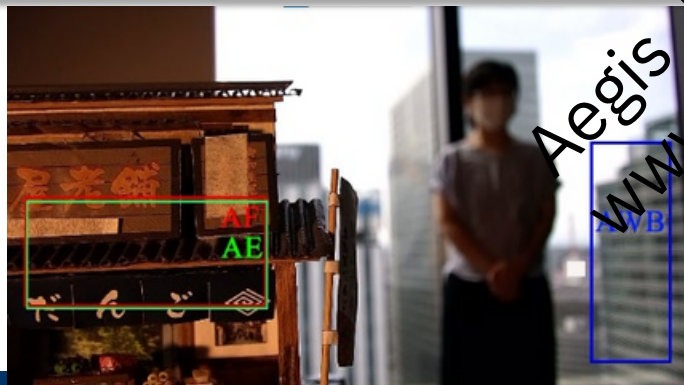


## Super/Super+ Stabilizer

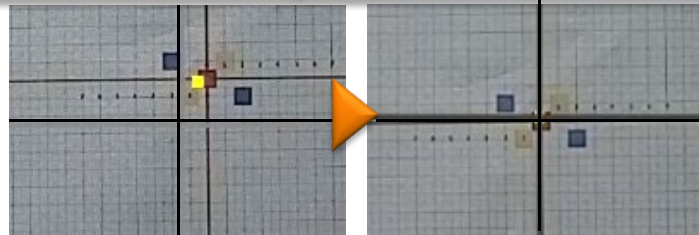


Wide correction area  
Swinging in roll direction supported

## Spot Focus/AE/AWB



## Boresight Correction



When this function is enabled,  
FOV will be narrower in the new FCB