

This information is brought to you by:



**ELECTRONIC GROUP, INC**  
480-635-8400 p \* aegis-g2@aegiselect.com  
<http://www.aegis-elec.com>

**NEW**

# FHD BLOCK CAMERA

FCB-EV9520L

STARVIS  
NEXT GENERATION

COMING SOON

1080P

STARVIS 2

60 FPS

130dB  
63.7 dig  
LVDS



**30x  
1/2.8"**

ZOOM

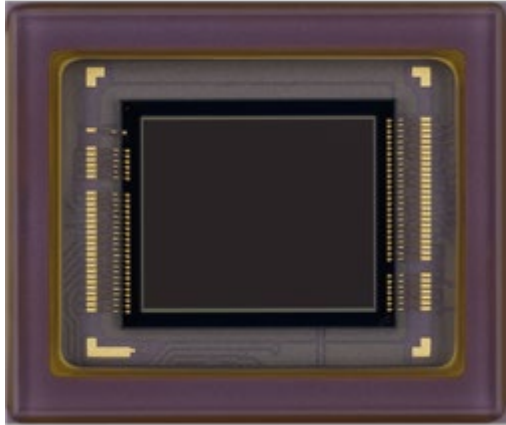
For More Information Please Call Aegis Electronic Group, Inc. \*CA- (760) 729-2026 AZ- (480) 635-8400 \* aegis-g2@aegiselect.com \* <http://www.aegis-elec.com>

# FCB-EV9520L Overview

- ❑ **New 1/3” FCB Block successor camera for FCB-EV7520/A**
- ❑ **Convenient migration & upgraded product line of 1/2.8”**
- ❑ **Designed for Surveillance, Medical, Off-line inspection equipment and added values applications/markets for general inspections and monitoring**

# FCB-EV9520L with Starvis 2 Technology

- ❑ IMX-662 (new Sony sensor for security market)



1/2.8"

16:9

2 MP

STARVIS 2

High sensitivity  
(day/night)

# FCB-EV9520L Spec Comparison

	Sony FCB-EV7520 FCB-EV7520A	Sony New FCB-EV9520L
Imager	1/2.8" 2M STARVIS	1/2.8" 2M STARVIS2
Output	1080 60p	1080 60p
Min Illumination* ICR OFF	0.1lx	<b>Better than 7520/A</b>
Min Illumination* ICR ON	0.006lx	<b>Better than 7520/A</b>
WDR	130dB	130dB
Optical zoom	30x	30x
H FOV	63.7deg	63.7deg
EIS	EIS	<b>Super Stabilizer</b> (Super/Super+)
Boresight correction	-	<b>Yes</b>
Spot Focus/AE/AWB	-	<b>Yes</b>
ICR ON COLOR		<b>Yes</b>
Power consumption	3.2W when motor operates 4.0W	<b>4.4W (Tentative)</b> when motor operates 5.2W
I/F	LVDS, CVBS	<b>LVDS</b>
Size	50 x 60 x 89.7 mm	50 x 60 x 89.7 mm

# Image Sensor Improved

	IMX291/290 in FCB-EV7520/A	IMX662 in new FCB-EV9520L
Optical size	1/2.8"	1/2.8"
Number of recording pixels	1920 x 1080	1920 x 1080
Pixel size	2.9um	2.9um
Pixel Gen.	<b>STARVIS</b>	<b>STARVIS 2</b>
SNR1s	0.23lx	0.18lx
Quantum Efficiency @850nm	30%	51%

1.6x

Conventional STARVIS



STARVIS2 NIR Improved



条件：F=1.6, Exp.=33.3msec, Gain=0dB, 850 nm

## Local tone mapping HDR



## Clear HDR



Conventional: DOL HDR



IMX662: Clear HDR

Available by firmware upgrade

## Automatic 50/60Hz detection



Can we not use our videomaterial?

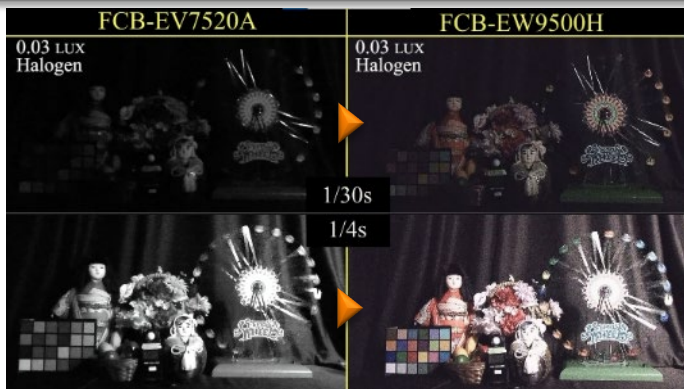
## Rolling shutter compensation



Can we not use our videomaterial?

# Inherited Functions from FCB-9500 Series

## ICR ON COLOR

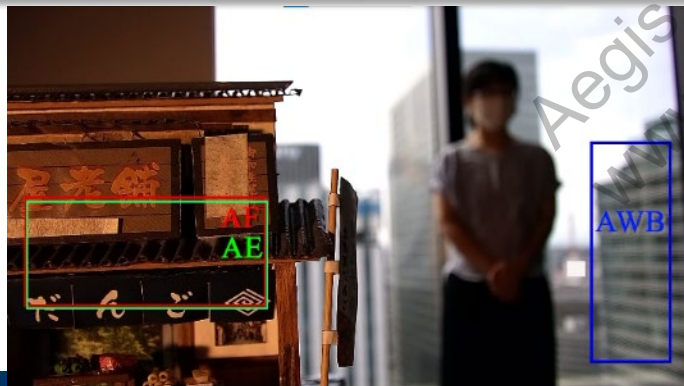


## Super/Super+ Stabilizer

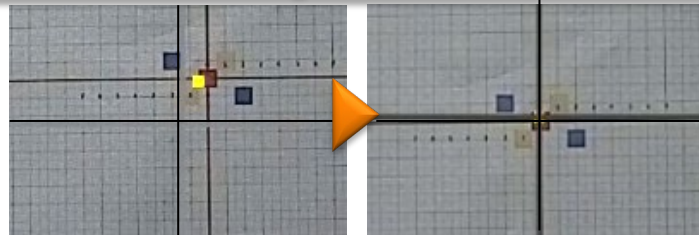


Wide correction area  
Swinging in roll direction supported

## Spot Focus/AE/AWB



## Boresight Correction



When this function is enabled,  
FOV will be narrower in the new FCB