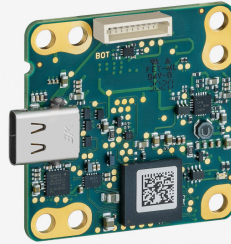
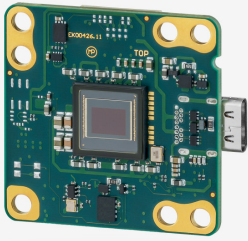


In series

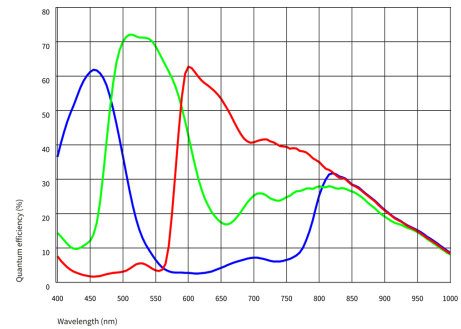
The model is in series and available for the long term.



Specification

Sensor

Sensor type	CMOS Color
Shutter	Rolling shutter
Sensor characteristic	Linear
Readout mode	Progressive scan
Pixel Class	8 MP
Resolution	8.41 Mpix
Resolution (h x v)	3864 x 2176 Pixel
Aspect ratio	16:9
ADC	12 bit
Color depth (camera)	12 bit
Optical sensor class	1/3"
Optical Size	5.603 mm x 3.155 mm)
Optical sensor diagonal	6.43 mm (1/2.49")
Pixel size	1.45 μm
Manufacturer	Sony
Sensor Model	IMX415-AAQR-C
Gain (master/RGB)	-/-
AOI horizontal	same frame rate
AOI vertical	increased frame rate
AOI image width / step width	24 / 24
AOI image height / step width	40 / 4
AOI position grid (horizontal/vertical)	2 / 4
Binning horizontal	increased frame rate
Binning vertical	increased frame rate
Binning method	M/C automatic
Binning factor	2
Subsampling horizontal	-
Subsampling vertical	-
Subsampling method	-
Subsampling factor	-



Model

Frame rate freerun mode	25 fps
Frame rate trigger (continuous)	25 fps
Frame rate trigger (maximum)	25 fps
Exposure time (minimum - maximum)	0.032 ms - 1900 ms
Power consumption	0.5 W - 1 W

Ambient conditions

The temperature values given below refer to the outer device temperature of the camera housing. For PCB versions, refer to the separate hints in the respective documentation.

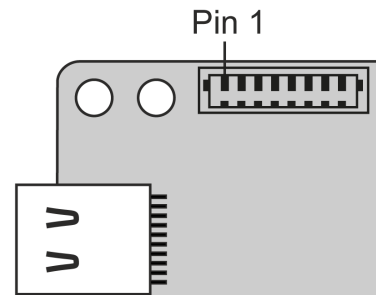
Device temperature during operation	0 °C - 55 °C / 32 °F - 131 °F
Device temperature during storage	-20 °C - 80 °C / -4 °F - 176 °F
Humidity (relative, non-condensing)	20 % - 80 %

Connectors

Interface connector	USB Type-C
I/O connector	8-pin connector
Power supply	USB cable

Pin assignment I/O connector

1	Voltage output 3.3 V
2	Ground (GND)
3	Flash output without optocoupler - Line 1
4	Trigger input without optocoupler - Line 0
5	not connected
6	not connected
7	Ground (GND)
8	USB Power: 5 V, max. 400 mA



Design

Lens Mount	-
IP code	-
Dimensions H/W/L	36.0 mm x 36.0 mm x 8.0 mm
Mass	7 g

Features

Image Acquisition

Freerun	✓
Software trigger	✓
Hardware trigger	✓
Trigger controlled exposure	-
Denoisier	-
Long exposure	-
Line scan	-
Line scan highspeed	-
Global start	-

Flashing

Flashing	-
PWM flashing	-

Image Adjustments	Auto exposure	-
	Auto gain	-
	Auto whitebalance	-
	Color correction	-
	Gamma	-
	LUT	-
	Mirror/flip	X/Y
On-board Image Processing	Pixel formats	BayerGR10g40IDS BayerGR12g24IDS
	Region of interest	✓
	Decimation (FPGA)	-
	Decimation (Sensor)	-
	Binning (FPGA)	-
	Binning (Sensor)	2x2 Horizontal and vertical binning can only be applied jointly.
Others	Chunks	-
	Sequencer	-
	Events	-
	Firmware update	✓
	1st supported firmware version	2.11