

LVDS to YPbPr, CVBS or HDMI INTERFACE BOARD

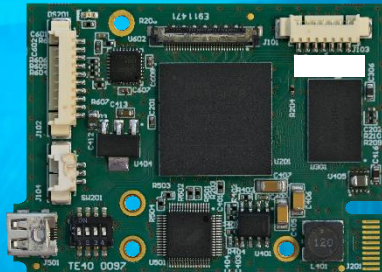
For TAMRON MP1010M-VC / MP1110M-VC

This information is brought to you by:



ELECTRONIC GROUP, INC
480-635-8400 p * aegis-g2@aegiselect.com
http://www.aegis-elec.com

TAMRON[®]
New eyes for industry



Twiga has designed the first solution for both LVDS to HDMI or analog HD/ SD output for Tamron MP1010M-VC and new MP1110M-VC modules

FEATURES

- Digital HDMI video output (up to 1080p60)
- YPbPr analog HD video output (up to 1080p30)
- CVBS & YC analog SD video output
- NTSC / PAL video format
- "Letter box" / "Crop" analog video conversion
- 720p50/60, 1080p25/30 (YPbPr)
- 1080p25/30 to PAL/NTSC (Y/C - CVBS)
- RS232 / TTL - VISCA serial control
- GPIO for zoom, focus, freeze control
- 8 to 12 VDC power supply
- Size : 55mm x 41.5mm

Video format HDMI – Analog HD & SD

The board supports HDMI video output up to 1080p60, YPbPr analog HD, analog SD NTSC/PAL video format.

"Letter box" or "Crop" conversion from HD 16/9 to SD 4/3 aspect ratio are available.

Serial and GPIO control

The board supports RS232 / TTL levels - VISCA protocol. GPIO are available for zoom, focus and freeze control.

Compact & cost effective solution

Highly compact, LVDS to analog HD & SD interface board is the ideal cost effective solution for a wide variety of applications.

TARGET APPLICATIONS



Drone / Video conferencing / UAV'S / ROV'S / Inspection / Low vision / Traffic control / ANPR / Medical

Onboard Connectors

J102 COM + Power + Analog

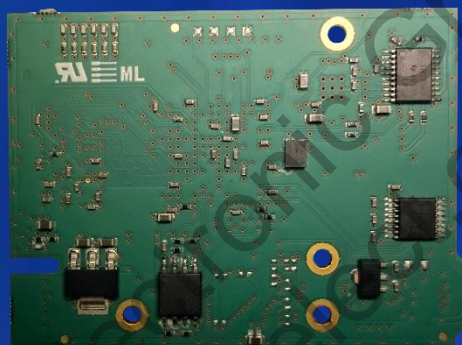
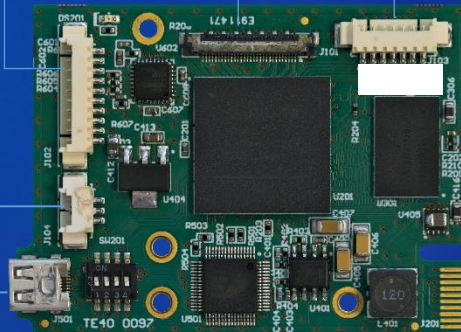
- 1 CVBS / Y
- 2 0V-GND
- 3 TxD (board input) TTL
- 4 RxD (board output) TTL
- 5 0V-GND
- 6 + 8 to 12 V
- 7 0V-GND
- 8 C video / Pr
- 9 0V-GND
- 10 Y video / Pb

HDMI output

J104 RS232

- 1 0V-GND
- 2 RxD-232 (board output)
- 3 TxD-232 (board input)

J101 Tamron LVDS Camera Input



J103 GPIO

- 1 0V-GND
- 2 Zoom TELE
- 3 Zoom WIDE
- 4 Focus auto / manual
- 5 Focus NEAR
- 6 Focus FAR
- 7 Freeze

LVDS to YPbPr, CVBS or HDMI interface board for Tamron MP modules

Functions Specifications

Functions	Specifications
Digital video output	HDMI
Analog HD video output	YPbPr
Analog SD video output	CVBS & Y/C NTSC/PAL format
Analog video conversion	« Letter box » or « Crop » format
GPIO control	Zoom, focus, freeze control
Camera control	TTL/RS232 levels - VISCA protocol
Power supply	8 to 12 VDC, 5 W (including camera)
Operating temperature range	0°C to 60°C
Storage temperature range	-20°C to 60°C
Regulation	EMC FCC part 15, PCB : UL 94 V0
Dimensions (mm)	55 (H) x 41.5 (W) x 4.5 (D)
Weight (g)	13

Accessory set

Content

- 30 way USL20-30SS-012-C micro coaxial cable ✓
- 10 way cable - power supply + COM + SD/HD output ✓
- 7 way cable – GPIO – Zoom, Focus, Freeze ✓
- 3 way cable – RS232 ✓
- Screws + spacers ✓