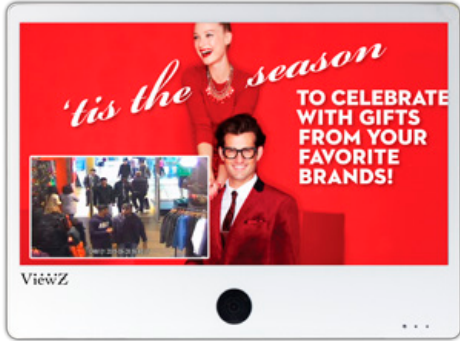




**ELECTRONIC GROUP, INC**  
 480-635-8400 p \* aegis-g2@aegiselect.com  
 http://www.aegis-elec.com

# VZ-PVM-I3W3

## IP HD PUBLIC VIEW LED MONITOR



### VZ-PVM-I3W3 ADVANTAGES

- 27" IP Public View Monitor
- **Onvif Compliant (Fully Compatible with VMS) - Profile S**
- "A" Commercial Grade LED
- Built in 2.1 Mega Pixel Camera
- Camera Motion Sensor
- Timed Source Switching
- Auto Power / Source Recovery
- 600 TV Line - Analog Video Resolution
- PIP / PBP / VOV
- BNC(NTSC/PAL), VGA, 2 HDMI, DVI, PC Stereo
- 3D Comb-filter, De-interlace
- Support dual voltage solution (110V AC and 24V DC)
- 3-Year Warranty

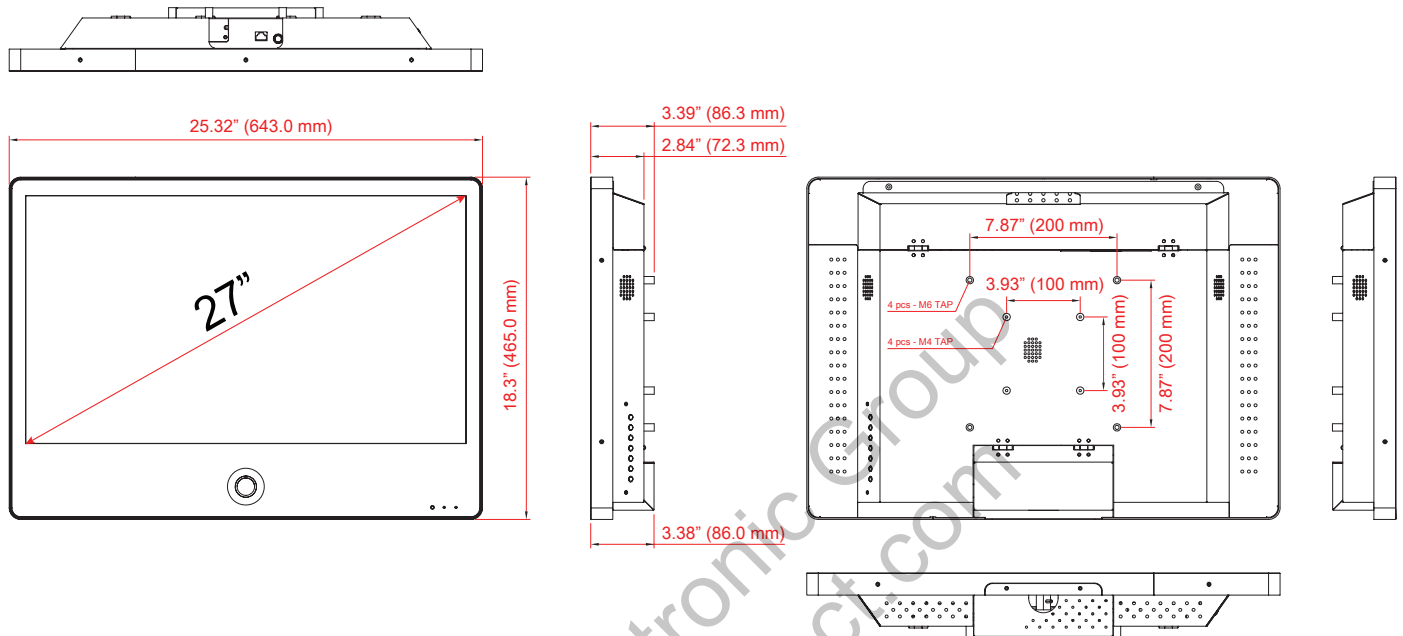
| MODEL #                                   |                                                                   | VZ-PVM-I3W3                                |        |
|-------------------------------------------|-------------------------------------------------------------------|--------------------------------------------|--------|
| <b>DISPLAY</b>                            |                                                                   |                                            |        |
| Screen Size                               | 27"                                                               |                                            |        |
| Max. Resolution                           | 1920 x 1080 @60Hz                                                 |                                            |        |
| Pixel Pitch                               | 0.3112mm x 0.3112mm                                               |                                            |        |
| Brightness                                | 300cd/m <sup>2</sup> (Typical)                                    |                                            |        |
| Contrast Ratio                            | 3000:1                                                            |                                            |        |
| Aspect Ratio                              | 16 : 9                                                            |                                            |        |
| Viewing Angle (H/V)                       | 178° / 178°                                                       |                                            |        |
| Display Color                             | 16.7 Million                                                      |                                            |        |
| Response Time                             | < 12 ms                                                           |                                            |        |
| Video System                              | NTSC / PAL                                                        |                                            |        |
| Frequency (H) / Frequency (V)             | 31 ~ 80Khz / 56 ~ 75Hz                                            |                                            |        |
| <b>INTERFACE</b>                          |                                                                   |                                            |        |
| AV (Composite) In / Out                   | 1 / 1                                                             |                                            |        |
| Camera Out                                | 1                                                                 |                                            |        |
| DVI - In / HDMI In / VGA In (15Pin D-Sub) | 1 / 2 / 1                                                         |                                            |        |
| PC Stereo In / Out                        | 1 / 1                                                             |                                            |        |
| Ethernet 10 / 100                         | 1                                                                 |                                            |        |
| <b>SPECIAL FEATURES</b>                   |                                                                   |                                            |        |
| Multi Display Function                    | PIP / PBP / VOV                                                   |                                            |        |
| Filter Type                               | 3D Comb-filter / De-Interlace                                     |                                            |        |
| Analog Video Resolution (MAX)             | 600 TV Line                                                       |                                            |        |
| Multi-lingual Language                    | English, Spanish, French, German, Italian, Portuguese, Dutch      |                                            |        |
| <b>DIMENSIONS &amp; WEIGHT</b>            |                                                                   |                                            |        |
| Outline Dimension (W x H x D)             | 25.32" x 18.3" x 3.39"                                            |                                            |        |
|                                           | 643.0mm x 465mm x 86.3mm                                          |                                            |        |
| Net Weight / Gross Weight                 | 24.91 lbs ( 11.3 kg ) / 33.95 lbs ( 15 kg )                       |                                            |        |
| <b>MOUNT</b>                              |                                                                   |                                            |        |
| VESA                                      | 100mm x 100 mm / M4 x L8 Screws<br>200mm x 200mm / M6 x L8 Screws |                                            |        |
| <b>GENERAL</b>                            |                                                                   |                                            |        |
| Transmitter - IR Remote Control           | YES                                                               |                                            |        |
| Power                                     | Electrical Ratings                                                | AC 110~240V (50/60Hz)                      | 24V DC |
|                                           | Consumption                                                       | 55W                                        | 55W    |
| Warranty                                  | Parts / Labor                                                     | 3 Year / 3 Year                            |        |
|                                           | MTBF (Approx.)                                                    | 50,000 Hours                               |        |
| Operating Temperature                     | 32 - 104°F / 0 - 40°C                                             |                                            |        |
| Regulation                                | cUL, FCC(A)                                                       |                                            |        |
| Compatible Mounts                         | Wall                                                              | VZ-WM50, VZ-AM02                           |        |
|                                           | Ceiling                                                           | VZ-CMKIT-01, VZ-CMKIT-02, VZ-CM06, VZ-CM18 |        |

| <b>CAMERA</b>                        |                                                                                                                                            |
|--------------------------------------|--------------------------------------------------------------------------------------------------------------------------------------------|
| Camera Type                          | 2.1 Mega Pixel IP Camera                                                                                                                   |
| Image Sensor                         | Panasonic 2.1 Mega Pixel C-MOS Sensor                                                                                                      |
| Lens                                 | DC Auto Iris 2.8~12mm Vari-focal Lens                                                                                                      |
| Total / Effect Pixel                 | 1920(H) x 1080p(V) 30fps                                                                                                                   |
| Video Compression                    | H.264, CBR, VBR support                                                                                                                    |
| Video Out                            | 1ch CVBS (NTSC/PAL) / 1ch RJ-45 output                                                                                                     |
| Motion Detection                     | Support                                                                                                                                    |
| Ethernet Port                        | 10 / 100 Base-T                                                                                                                            |
| Webclient Connection Protocol        | TCP / IP                                                                                                                                   |
| Support Protocol                     | IHTTP, TCP/UDP/IP, ARP, ICMP, RTP/RTSP, Multicast, Telnet, ftp, PPPoE, SMTP(e-mail), DHCP, NTP, uPNP, etc, ONVIF, PSIA support             |
| Function                             | 2D/3D NR, D-ZOOM, DPC, HLC/BLC, Defog D/N, DWDR, AGC, AWB, IR SMART                                                                        |
| Dynamic IP                           | Dedicated dynamic IP service using <a href="http://www.ipcctvdns.com">www.ipcctvdns.com</a>                                                |
| <b>MEDIA CARD - Optional Feature</b> |                                                                                                                                            |
| External Storage                     | Support SD/SDHC CARD, USB 2.0 HOST                                                                                                         |
| Output                               | VIDEO - HDMI(1080p) / AUDIO - L/R, HDMI                                                                                                    |
| VIDEO Format                         | RM, RMVB, AVI, DVIX, MKV, MOV, HDMOV, MP4, M4V, PMP, AVC, FLV, VOB, MPG, DAT, MPEG, TS, TP, M2TS, WMV, H.264, H.263, WMV9, VC-1, MPEG1/2/4 |
| VIDEO Resolution                     | 1080P @60Hz                                                                                                                                |
| AUDIO Format                         | MPEG1/2/4, MP3, WMA, OGG, AAC, FLAC, APE, AC-3, DTS, ATRA, WAV, PCM                                                                        |
| Image Format                         | JPEG, TIF, PNG, BMP                                                                                                                        |
| VIDEO Play Control                   | AUTO, REPEAT, ZOOM, RESUME, TIME                                                                                                           |

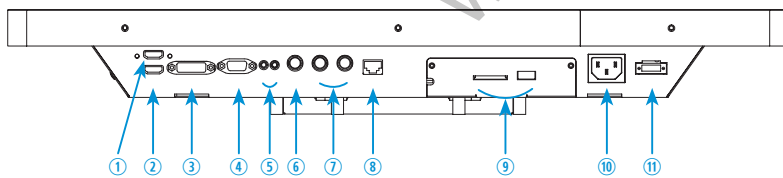
# VZ-PVM-I3W3

IP HD PUBLIC VIEW LED MONITOR

## DIMENSIONS



## INTERFACE



1. HDMI2 IN
2. HDMI1 IN
3. DVI IN
4. VGA IN
5. PC STEREO IN/AUDIO OUT
6. CAMERA OUT
7. AV(composite)2 IN/OUT
8. IP CAMERA ETHERNET
9. MEDIA CARD(USB, SD) - Optional
10. AC 110~240 V IN
11. DC 24V IN