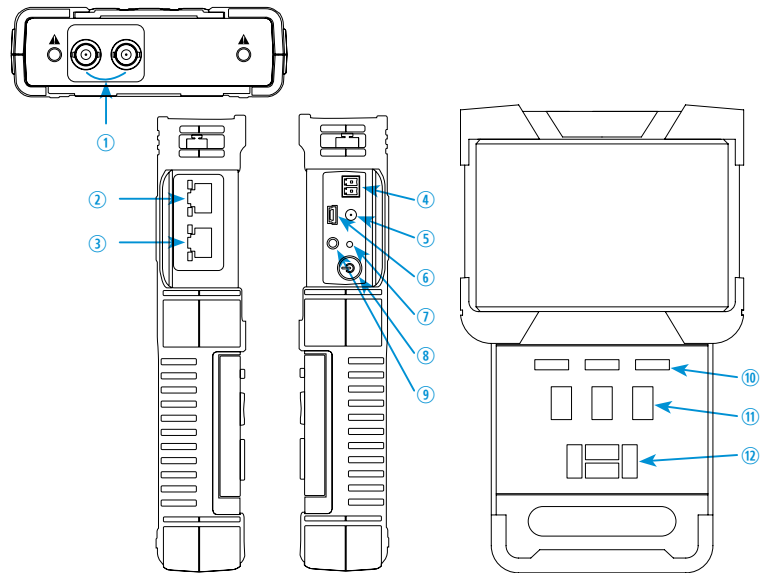




VZ-40ISM ADVANTAGES

- 4" LED with 800 x 480 Resolution
- **Onvif, RTSP and RTP** Support
- Streamlines the Process of New IP Camera Installation
- Support **IPC (Internet Protocol Communication) Test** such as IP (DHCP, manual IP Setup), IPC, IPC Imaging and Ethernet Test
- Support Ethernet 10/100/1G Connection and Packet Loss Test
- Screen Shot Save, Video Streaming Record and Playback Available
- Provides Power for One PoE Camera
- **P.o.E. Test - PD & PSE**
- Support **Analog Video Test** with NTSC/PAL (1 Vpp)
- Provides the Ability to Troubleshoot Camera Viewing angle, Focus, Zoom, and Display Setting on Installation Site
- Support 485 (**PTZ Control**)
- Supports more than 30 PTZs, such as PELCO-D/P, Panasonic and SAMSUNG
- Pattern generator, Portability, PoE and DC Power Supply
- High Capacity Power with Lithium Battery (Avg. 12 hours)

INTERFACE



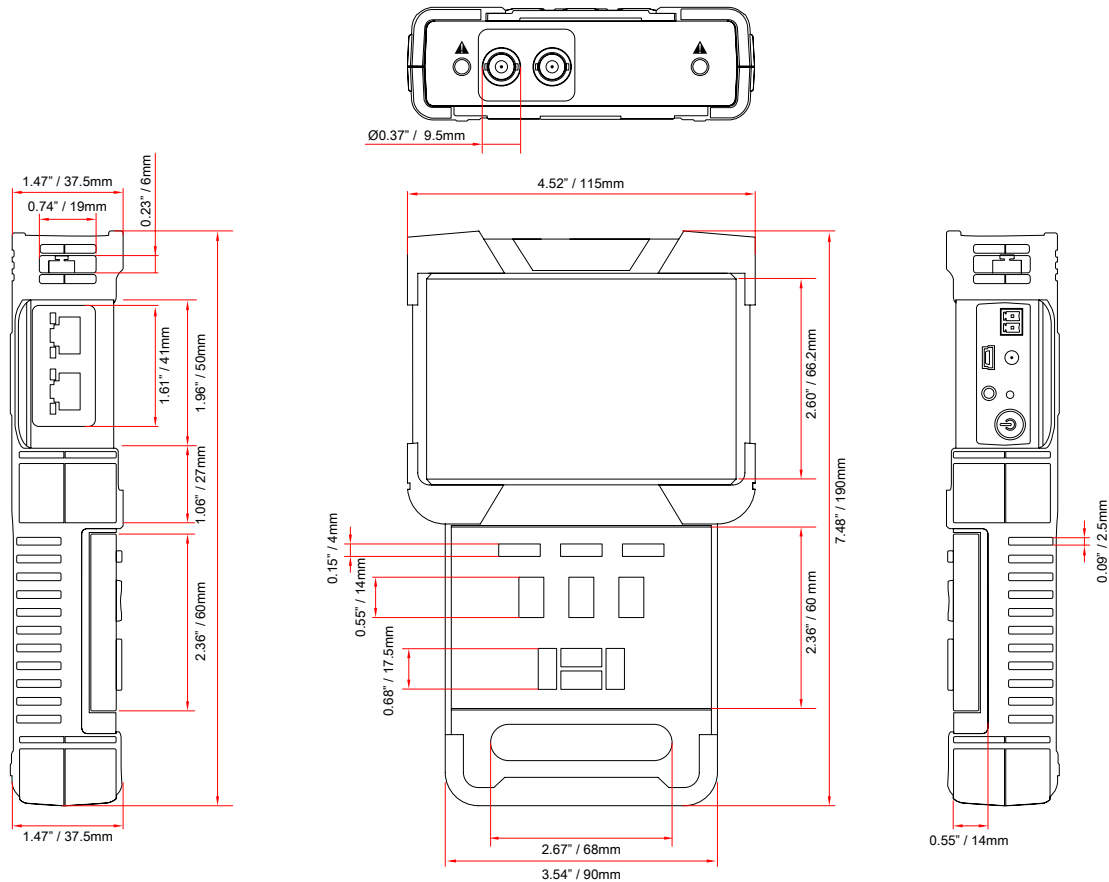
- | | | |
|-----------------------|------------------|--------------------|
| 1. ANALOG BNC IN /OUT | 5. DC 12V OUTPUT | 9. AUDIO IN |
| 2. PoE PSE IN | 6. MINI USB | 10. MODE, SET, SCR |
| 3. PoE PD IN (CHARGE) | 7. RESET BUTTON | 11. PTZ Keys |
| 4. RS485 PTZ | 8. POWER BUTTON | 12. Arrow Keys |

MODEL #		VZ-40ISM
DISPLAY		
Screen Size	4"	
Max. Resolution	800 x 480 @60 Hz pixel	
Display Color	16.7 Million	
INTERFACE		
BNC In / Out (Active Loop Through)	1 / 1	
Ethernet 10/100/1000 with P.o.E.	2	
Audio In	1	
Mini USB	1	
12V/ 2A Out	1	
RS485 (PTZ Control)	1	
Power / Reset Button	1 / 1	
WEIGHT & DIMENSIONS		
Product Outline Dimension (W x H x D)	4.52" x 7.48" x 1.47"	
	115 mm x 190 mm x 37.5 mm	
Gross Weight	3.52 lbs / 1.6 Kg	
GENERAL		
Battery	- Capacity	7.4V 22.2Wh
	- Type	Replaceable Lithium Polymer Battery
	- Operation Time	10 ~ 12 Hours
LED Indicator	35lm LED x 2 - Auxiliary Lighting	
P.o.E. Injector	PoE Power Injector - 48V/15W Output AC100~230v 50~60Hz Input	
Power Charging	POE Charging, Max Power 10W Full Charging Time - 3 to 4 Hours	
Power Saving Mode	Working, Standby & Shutdown	
Automatic Standby	Adjustable Time Interval - 5 to 60 Minutes	
Operating Temperature	-4 ~ 158°F / -20 ~ 70°C	
Operating Humidity	30% ~ 90%	
Warranty	- Parts / Labor	2 Year / 2 Year
	- MTBF (Approx.)	30,000 Hours
Regulation	CE, FCC	
Operation	Power Button, Surface Keyboard with 12 Keys QWERTY Swing Keyboard with 45 Keys	
Language	English	
Package Include	VZ-40ISM x 1, BNC Cable x 1, Battery x 1 RS485 Test Cable x 1, Audio Test Cable x 1 Audio Cable x 1, 110V Power Cable x 1 Ethernet Cable x 1, PoE Power Injector x 1 12V Power Output Cable x1, Lanyard x 1 Tool Bag x 1, User Manual x 1	

Contact ViewZ

- Address : 177 W. Orangethorpe Ave., Placentia, CA 92870
- Phone : (714) 996-1177, Fax : (714) 996-1138
- Sales : sales@viewzusa.com
- Specification subject to change without notice.

DIMENSION



AVAILABLE TEST MODES

IPC TEST	
Ethernet test	<ul style="list-style-type: none"> * 10M/100M/1G Ethernet link * Ethernet loop detection * DHCP client server and server * Ethernet flow monitor * Data link quality monitor
Ethernet test	<ul style="list-style-type: none"> * DHCP/Manually Setting the IP
IPC Test	<ul style="list-style-type: none"> * Find devices, real-time video camera configuration, PTZ test * Find ONVIF devices over network segments
IPC Imaging test	<ul style="list-style-type: none"> * Full-screen preview screen shot and video recording zoom in preview(full screen,1x,2x,4x)
Connector	<ul style="list-style-type: none"> * Dual-port RJ45 ethernet 1Gbps serial connection supported
PoE TEST	
PD test	802.3at - power supply voltage measurement
PSE test	<ul style="list-style-type: none"> * PSE.802.3at;25.5W max * PD actual power measurement

485 PTZ CONTROL TEST	
Communication interface	* RS485
Communication protocol	* Pelco-D/P, Samsung, Panasonic, Lilin and Over 30 Protocols
Baud rate	* 150,300,600,1200,2400,4800,9600,19200bps
Protocol code capture	* Receive and display RS485 data sent from Controlling device
ANALOG VIDEO TEST	
Video Format	* NTSC/PAL Auto-adaptation
Video signal	* 1Vpp
Display adjustment	<ul style="list-style-type: none"> * Video display brightness, contrast * Color saturation is adjustable
Video digital zoom	* Support full screen/1x/2x/4x, screen shot, video Recording(h.264)
Video signal generator	* Generate PAL/NTSC format graphic pattern
AUDIO TEST	
Audio Test	* Stereo audio input

Contact ViewZ

- Address : 177 W. Orangethorpe Ave., Placentia, CA 92870
- Phone : (714) 996-1177, Fax : (714) 996-1138
- Sales : sales@viewzusa.com
- Specification subject to change without notice.