

IK-4K

UltraHD 4K video camera
3840 x 2160 / 1080p

World's smallest
3-chip UltraHD
video camera

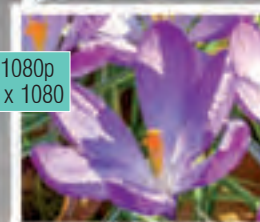


Toshiba introduces the world's smallest 3-chip UltraHD 4K video camera providing 8Mp 3840 x 2160 output and showing extraordinary detail with up to 1600 TV lines of resolution. Video output is switchable between 4K, 1080p and 1080i formats to configure to any HD display and application.

With world-class innovation, the IK-4K camera incorporates the latest in CMOS sensors, proprietary prism technology and advanced image processing to provide unprecedented color accuracy, incredible resolution, and the world's smallest 3-chip package.

Features

- 3840 x 2160 50/59.94 Hz UltraHD 4K output
- Switchable formats; 4K, 1080p and 1080i
- Amazing details up to 1600 TV lines resolution
- Ultra-compact two piece design
- 4x 3G/HD-SDI output for maximum signal fidelity
- 12-channel color adjustment to achieve exceptional color accuracy and control
- 5 User-configurable settings files to support different operating modes and conditions
- Image flip and mirror
- Freeze frame
- Gen-lock for 3D and multi-camera use
- Remote control via RS232
- C-mount lens mount



UltraHD 3840 x 2160 format provides 4x the pixel data of 1080p, resulting in incredibly sharp details and higher resolution.

(Simulated images are for illustration purposes only.)

www.toshibacameras.com

TOSHIBA
Leading Innovation >>>



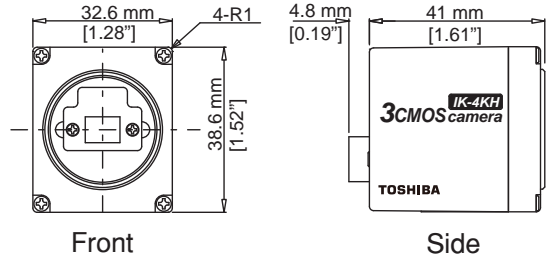
IK-4K

Camera Head Specifications

IK-4KH

Image Sensor	3-CMOS, 1/2.9", progressive
Output Matrix	Horizontal: 3840, Vertical: 2160 UHD 4K mode Horizontal: 1920, Vertical: 1080 HD 1080p/1080i
Output Resolution H/V	1600 TV lines standard UltraHD 4K mode 1000 TV lines or more 1080p/1080i modes
Sensitivity	F5.6 standard (59.94 Hz setting) F6.1 standard (50 Hz setting) (at 2000 lx, 3000K)
Minimum Illumination	19.5 lx (59.94 Hz setting) 16.2 lx (50 Hz setting) at F2.2, 24 dB
S/N Ratio	58 dB standard AGC: OFF, Gamma: OFF, Enhance: OFF Color matrix: OFF, Color temp: 5600K
Operating Temperature	0°C to 40°C / 32°F to 104°F
Operating Humidity	Less than 90% (non-condensing)
Weight	Approx. 70 g (2.5 oz)
Dimensions	W: 32.6 mm H: 38.6 mm D: 41 mm (1.28" x 1.52" x 1.61") Protruding portion is not included

Camera Head Exterior Dimensions



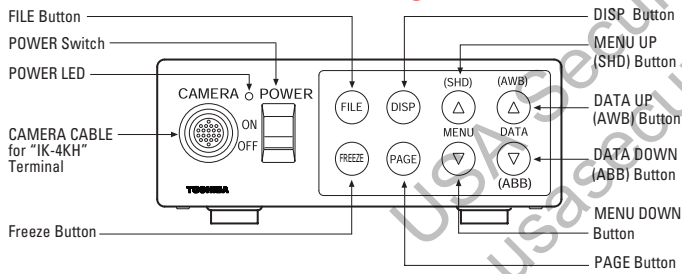
IK-4KE Controller Specifications

Power Supply	12V DC±10%
Power Consumption	13.8 W
Scanning System	Progressive / Interlaced (Selectable)
Scan Frequency	H: 67.433 kHz, V: 59.94 Hz :1080p / 59.94 Hz 4K / 59.94 Hz 4 division output H: 56.250 kHz, V: 50 Hz :1080p / 50 Hz 4K / 59.94 Hz 4 division output H: 33.716 kHz, V: 59.94 Hz :1080i / 59.94 Hz H: 28.125 kHz, V: 50 Hz :1080i / 50 Hz
Operating Temperature	0°C to 40°C / 32°F to 104°F
Operating Humidity	Less than 90% (non-condensing)
Weight	Approx. 800 g (1.76 lbs.)
Dimensions	W: 110 mm, H: 40 mm, D: 196 mm (4.33" x 1.58" x 7.72")
Scene Files	5 User-configurable scene files
White Balance	Auto / Manual (Selectable)
Gain	Auto (-6 dB to 24 dB); Manual (-6 dB to 24 dB), OFF
Output Signal	4x 3G/HD-SDI
Electronic Shutter	Auto / Manual / OFF 1/60 – 1/10,000

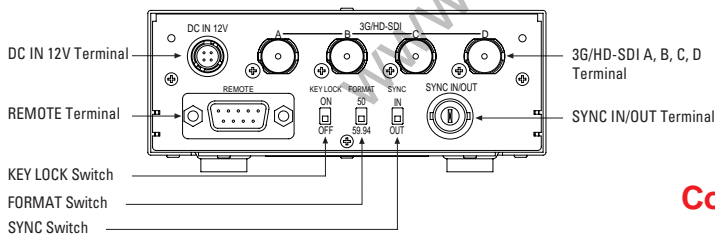
Complies to FCC Part 15 Subpart B, Class A, EN61000-6-4, EN61000-6-2
Toshiba environmental management exceeds RoHS

Controller Front and Back Panels

IK-4KE FRONT



IK-4KE REAR



System Components

CAMERA HEAD

IK-4KH

CAMERA CABLE

Model	Length
EXC-3HD03	3 m
EXC-3HD06	6 m
EXC-3HD10	10 m
EXC-3HD15	15 m

CAMERA CONTROL UNIT

IK-4KE

Connection

