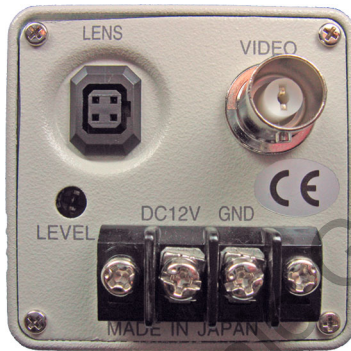


STC-160BT

The STC-160BT is a low cost, high resolution machine vision camera. The STC-160BT offers users a high resolution 1/3" CCD, fixed shutter speeds from 1/60 to 1/10,000 second, and much more.



STC-160BT



Features

- 1/3" CCD
- Machine Vision
- High Resolution
- Field Integration
- EIA & CCIR Formats
- Internal Sync
- Monochrome
- Cost Effective

Images shown not actual size

Specifications >>

Image Sensor:	Black & White: 1/3" Interline CCD (ICX408AL)
Effective Picture Element:	768 (H) x 494 (V)
Signal Format:	EIA (Also Available in CCIR Format - STC-165BC)
Scanning System:	2:1 Interlace
Horizontal Frequency:	15.734 kHz
Vertical Frequency:	59.94 Hz
Sync System:	Internal
Horizontal Resolution:	570 TV Lines
Minimum Illumination:	0.07 Lux @ F1.2, 50 IRE
S/N Ratio:	>56dB (AGC Off)
Gamma:	0.45 or 1 Selectable
AGC:	On/Off Selectable
Auto Iris:	DC Control
Electronic Shutter:	1/60 to 1/100,000 second
Fixed Shutter:	1/60 (1/50), 1/100 (1/125), 1/250, 1/500, 1/1,000, 1/2,000, 1/5,000, 1/10,000, 1/100,000 second
Video Out:	VS 1.0Vp-p, 75 Ω
Back Light:	On / Off Selectable
Power Supply:	12V DC
Power Consumption:	145mA
Operating Temperature:	-10°C ~ 45°C (14°F ~ 113°F)
Storage Temperature:	-30°C ~ 60°C (-22°F ~ 140°F)
Dimensions:	51 (W) x 51 (H) x 55.5 (D) (2.04" x 2.04" x 2.22")
Weight:	180g (6.35oz.)

>> STC-160BT

Mechanical Drawings

1. DIP Switch Designation

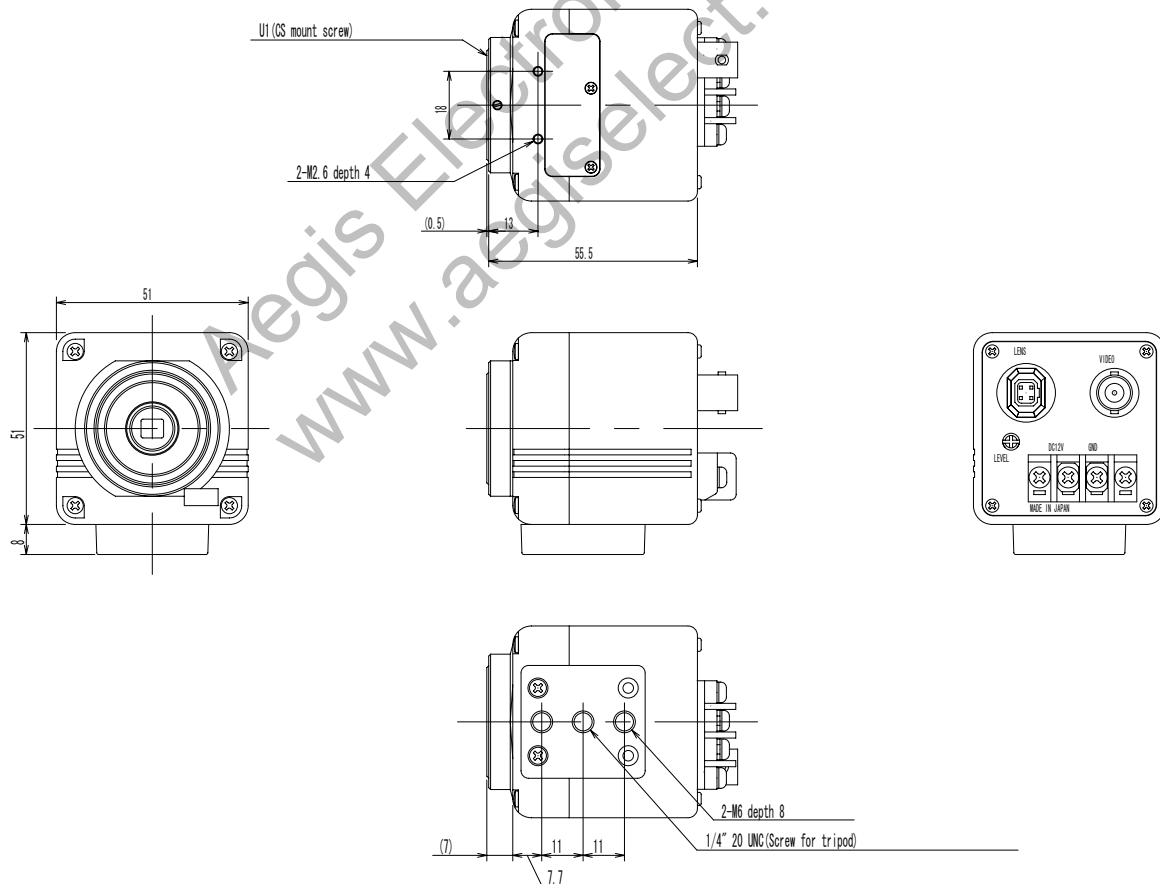
Switch Number	Function	Switch Position	
		ON	OFF
1	Shutter Mode		
2			
3			
4	Shutter Speed		
5			
6	Photometric Area	Full Screen	Center
7	Gain	Fix	AGC
8	Gamma	0.45	1

2. Shutter Mode Setting

Shutter Mode	SW1	SW2
Electronic Iris 1/60 - 1/100,000	OFF	OFF
Electronic Iris 1/100 - 1/100,000	ON	OFF
Fixed Shutter See Table 3	OFF	ON
1/60	ON	ON

3. Shutter Speed Setting

Shutter Speed	SW 3	SW 4	SW 5
1/100,000	OFF	OFF	OFF
1/10,000	ON	OFF	OFF
1/5,000	OFF	ON	OFF
1/2,000	ON	ON	OFF
1/1,000	OFF	OFF	ON
1/500	ON	OFF	ON
1/250	OFF	ON	ON
1/100	ON	ON	ON



This information is brought to you by: