



# *IFBEX232 FCB-RS Interface Board for Sony Cameras Connector and Pin Assignment*

<b>J-1 (9pin Power, VBS V-lock to Camera)</b>		
<b>PIN NUMBERS</b>	<b>NAME</b>	<b>LEVEL</b>
1	RxD	CMOS 5V (Low: Max 0.8V) (High: Min 2.0V) Read Data
2	TxD	CMOS 5V (Low: Max 0.1V) (High: Min 4.4V) Send Data
3	GND (RxD & TxD)	
4	DC IN	9.0V +/- 3V
5	GND (For DC IN)	
6	VBS OUT	1.0V +/- 0.2V
7	VND (VBS OUT)	
8	V LOCK Pulse OUTPUT	External VD-Lock Pulse (EX.FV Negative, 3V p-p 50% duty)
9	GND (V LOCK PULSE)	

\*Supplied Cable: 9-pin FFC Cable. Length is 11.5 inches (290 mm)

<b>J-2 (4-pin Y/C Camera)</b>		
<b>PIN NUMBERS</b>	<b>NAME</b>	<b>WIRE COLOR</b>
1	Y OUT	PURPLE
2	GND for Y	BLUE
3	C OUT	ORANGE
4	GND for C	GREEN

\*Supplied Cable: 4-pin harness cables with JST connector on both ends. Length is 12.6 inches (320mm)

<b>J-3 (DC, V Lock and Video Connector)</b>			
<b>PIN NUMBERS</b>	<b>NAME</b>	<b>LEVEL</b>	<b>WIRE COLOR</b>
1	POWER IN	6V - 12V	RED
2	GND (Power)		BROWN
3	V LOCK PULSE INPUT		ORANGE
4	VIDEO OUT	Composite Video	YELLOW
5	GND (For Video)	Composite Video	GREEN
6	Y-OUT	S-Video	BLUE
7	GND for Y	S-Video	PURPLE
8	C-Out	S-Video	GRAY
9	GND for C	S-Video	WHITE

\*Supplied Cable: 9-pin harness cables with JST connector on both ends. Length is 12.6 inches (320mm)

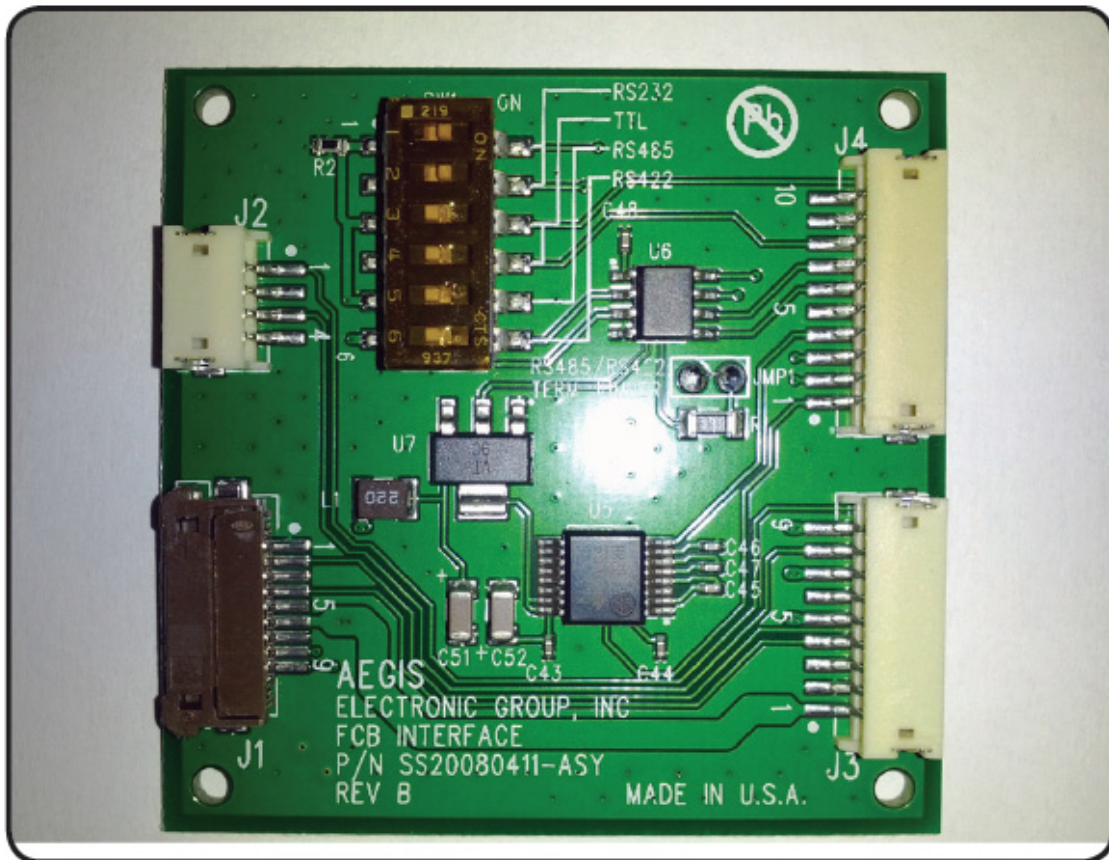
<b>J-4 (for Communications Connector)</b>			
<b>PIN NUMBERS</b>	<b>NAME</b>	<b>LEVEL</b>	<b>WIRE COLOR</b>
1	TxD IN	RS-232C	BROWN
2	TxD IN A	RS-422 / 485	RED
3	TxD IN B	RS-422/485	ORANGE
4	RxD IN	RS-232C	YELLOW
5	TD	TTL Level	GREEN
6	RxD IN Y	RS-422/485	BLUE
7	RxD IN Z	RS-422/485	PURPLE
8	RD	TTL Level	GRAY
9	GND		WHITE
10	Not in Use		BLACK

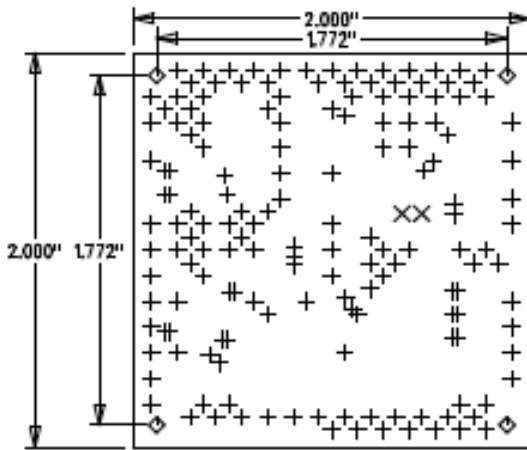
\*Supplied Cable: 10-pin harness cables with JST connector on both ends. Length is 12.6 inches (320mm)

To select the Serial / Communication level, use the following table to the dip switches

For	"ON"	"OFF"
RS232	1, 2	3, 4, 5, 6
TTL Direct	3, 4	1, 2, 5, 6
RS422/485	5, 6	1, 2, 3, 4

For RS422 JUMP 1 may be removed for use with multiple cameras





Primary Side Layer 1

Board thickness is  
0.062" +/-10%

SIZE	QTY	SYM	PLATED	TOL
0.01	160	+	YES	+/-0.003
0.03	2	X	YES	+/-0.003
0.095	4	◊	NO	+/-0.003