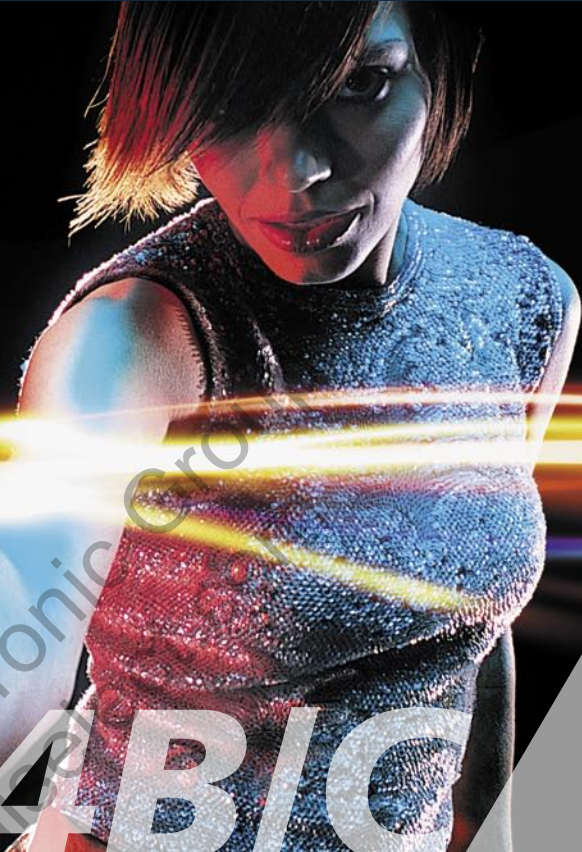
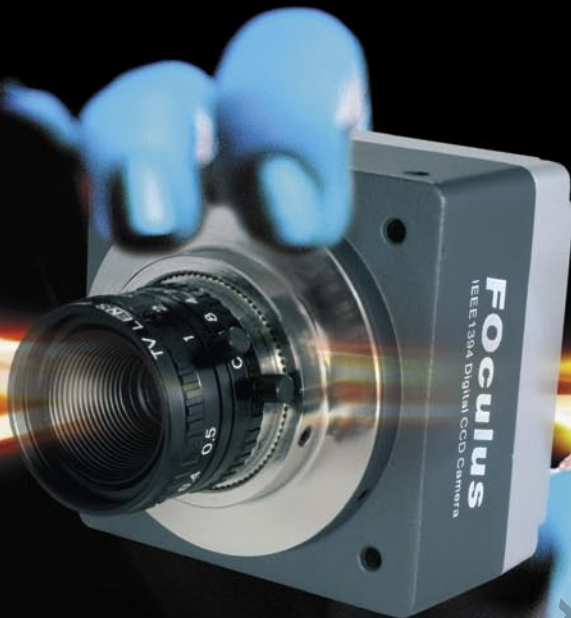


FOculus

Always a new perspective



FO114B/C

FO114B/C

IEEE1394 Digital CCD Camera

- *1/4" Progressive Scan CCD Image Sensor*
- *Resolution 330,000 (square pixel) VGA*
- *IEEE1394.a acc. IIDC v.1.3 Interface*
- *FO114B =B/W • FO114C =Color*
- *Hard-/Software Trigger*
- *External Trigger*
- *Framerate 60fps*
- *Camera setting via IEEE1394 Interface*
- *Solid and highly shock-resistant camera casing*
- *Application:*
 - *Machine Vision*
 - *Factory Automation*
 - *Quality Control*
- *Application Software included*
- *SDK optional*

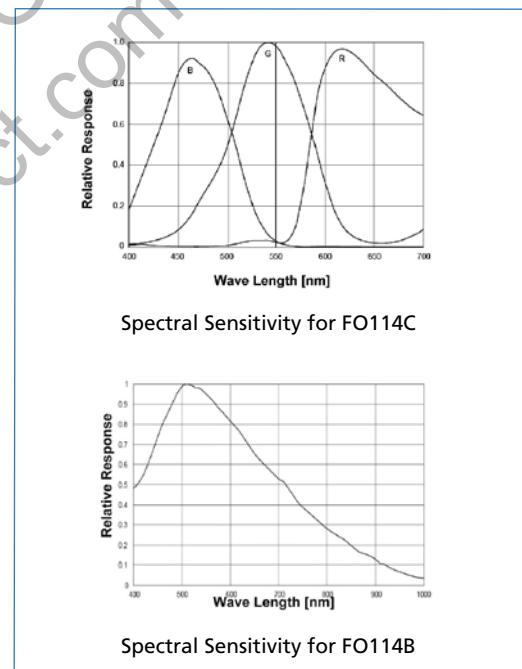
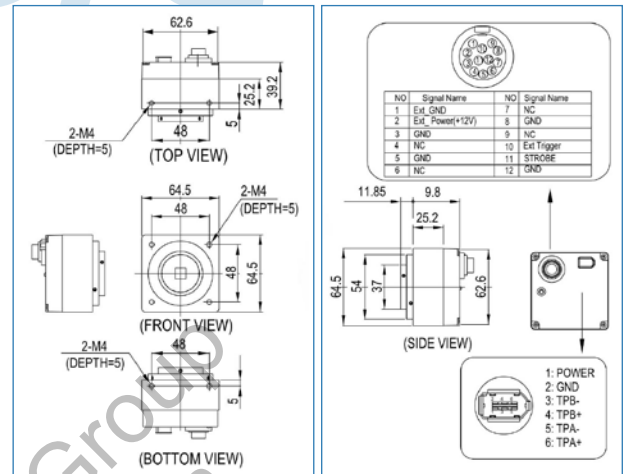
NET

NEW ELECTRONIC TECHNOLOGY

Technical Data

FO114B/C

	FO114B (B/W)	FO114C (Color)
Image Sensor	1/4" IT CCD ICX098BL	1/4" IT CCD ICX098BQ
Effective pixel	330,000 pixel, 659 (H) x 494 (V) VGA	
Data path	8bit B/W	8bit Raw RGB
Pixel size	5.60 (H) x 5.60 (V) μ m	
Chip size	4.60 (H) x 3.97 (V) mm	
Scanning System	Progressive Scan	
Frame rate	60 / 30 / 15 / 7.5 / 3.75 / 1.875 fps	
Synchronization	Internal	
Digital Interface	IEEE1394a	
Software Interf.	Acc. IIDC v. 1.3	
Gain control	0 ~ 27 dB	0 ~ 25 dB
Gamma	1.0	
Strobe output	Option	
S/N ratio	56 dB or better	
Power supply	8 VDC to + 30 VDC via the IEEE1394 cable	
Power consump.	approx. 225 mA	
Transfer rate	400 Mbps	
Trigger mode	External Trigger	
Shutter Speed	1 μ sec - 65 sec	
Gain adjustment	+/- 6dB	
Lens mount	C-mount	
Dimension	64 (W) x 64 (H) x 60 (D)mm / Approx. 300g	



Accessories: • IEEE 1394 cable, 6-pin • SDK (Software Development Kit) • OHCI Card • Tripod Adapter Plate • Trigger Cable 12-pin

Contact

This information is brought to you by:

Aegis
ELECTRONIC GROUP, INC
 480-635-8400 p * aegis-g2@aegiselect.com
<http://www.aegis-elec.com>

NET
 NEW ELECTRONIC TECHNOLOGY