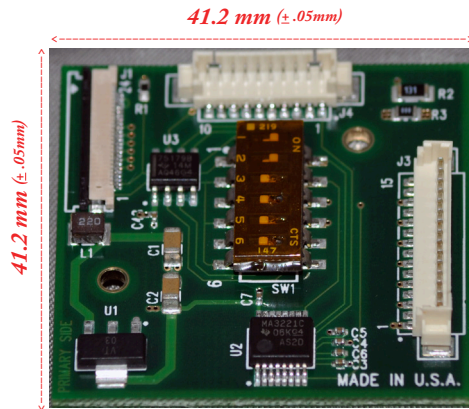


IFBEX232 HD Interface Board

for

Sony High Definition Block Cameras



Thickness of board (at highest point)= 6.4 mm

- J-1 to FCB-HD Series
- J-3 to Interface
- J-4 to Interface

Note: Composite Video & Y/C Video only operate in Standard Definition Mode, also HD Component Video only operates in High Definition Mode, which is selectable by communications and requires a hard reset.

J-1 (24pin Power, VBS Y/C, HD Component and Communication)		
PIN NUMBERS	NAME	LEVEL
1	GND (for TxD, RxD, & Rese	
2	TxD	CMOS 5V (Low: Max 0.1V) (High: Min 2.4V) Send Data
3	RxD	CMOS 5V (Low: Max 0.8V) (High: Min 2.0V) Read Data
4	Reset-In	Reset (Low:GND), Normal (High: 3.0V, OPEN)
5	GND (for Y Signal)	
6	Y Out	
7	GND (for C Signal)	
8	C Out	
9	GND (for VBS Out)	
10	VBS Out	
11	GND (for HD Y Out)	
12	HD Y Out	
13	GND (for HD PB Out)	
14	HD PB Out	
15	GND (for HD PR Out)	
16	HD PR Out	
17	GND (for DC IN)	
18	DC IN	9.0V ± 3V
19	DC IN	9.0V ± 3V
20	DC IN	9.0V ± 3V
21	DC IN	9.0V ± 3V
22	GND (for DC IN)	
23	DC IN	9.0V ± 3V
24	GND (for DC IN)	

*Supplied Cable: 24-pin, 0.5mm pitch FFC Cable. Length is 8 inches (200 mm)

J-3 (DC, VBS, Y/C and HD Component)			
PIN NUMBERS	NAME	LEVEL	WIRE COLOR
1	DC IN	6V - 12V	BROWN
2	GND (for DC IN)		BLACK
3	VBS Out	Composite Video Out	YELLOW
4	GND (for VBS Out)		BLACK
5	Y Out		ORANGE
6	GND (for Y Signal)		BLACK
7	C Out		WHITE
8	GND (for C Signal)		BLACK
9	HD Y OUT		GREEN
10	GND (for HD Y Out)		BLACK
11	HD PB Out		BLUE
12	GND (for HD PB Out)		BLACK
13	HD PR Out		RED
14	GND (for HD PR Out)		BLACK
15	NC		

*Supplied Cable: 15-pin harness cables with one Molex 1.25mm pitch connector. Length is 12 inches (304.8 mm)

J-4 (Communication Connector)			
PIN NUMBERS	NAME	LEVEL	WIRE COLOR
1	TxD IN	RS-232C LEVEL	BROWN
2	TxD IN A	RS-422 / R85	RED
3	TxD IN B	RS-422/R85	ORANGE
4	RxD IN	RS-232C LEVEL	YELLOW
5	TD	TTL LEVEL	GREEN
6	RxD IN Y	RS-422/R85	BLUE
7	RxD IN Z	RS-422/R85	VIOLET
8	RD	TTL LEVEL	GRAY
9	GND		WHITE
10	NC		BLACK

*Supplied Cable: 10-pin harness cables with one Molex 1.25mm pitch connector. Length is 12 inches (304.8 mm)



Works with the following Sony HD Block Camera Modules:

- FCB-H11
- FCB-EH3300
- FCB-EH3400
- FCB-EH6300